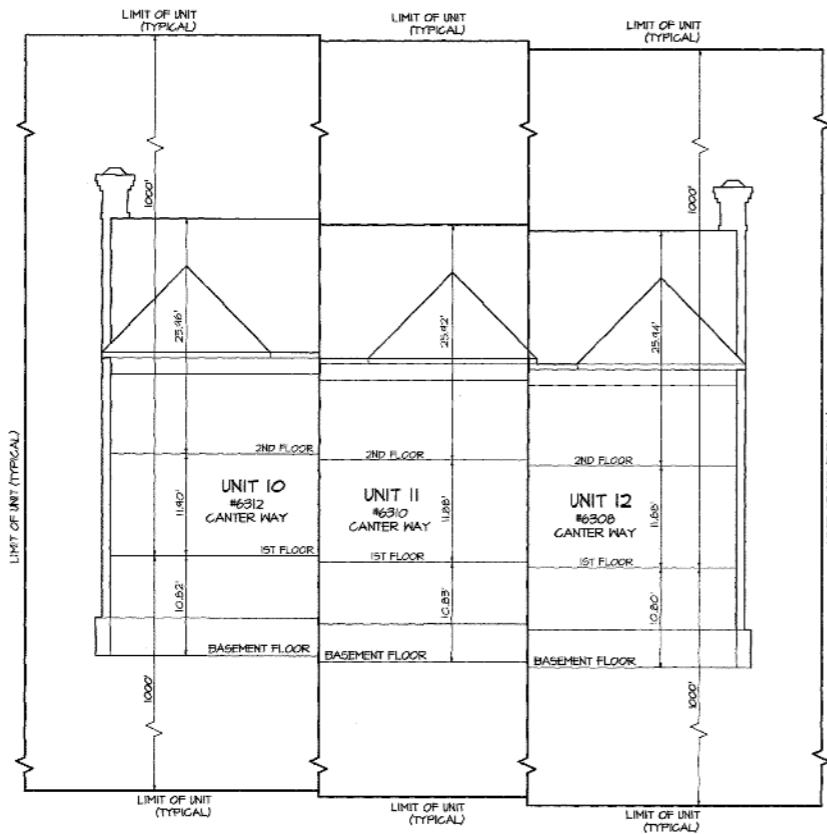


CHARLES STREET - MARYLAND ROUTE 139

**PLAN VIEW  
UNITS 10, 11 & 12**  
SCALE 1" = 20'



**VIEW A-A  
UNITS 10, 11 & 12**  
SCALE: 1" = 10'

S.M. FILE # 17 FOLIO 465

Date APR 21 2010

Test: *Signe Munk*  
Clerk

**SM**  
**31-465**



**MORRIS & RITCHIE ASSOCIATES, INC.**  
ENGINEERS, ARCHITECTS, PLANNERS, SURVEYORS & LANDSCAPE ARCHITECTS  
1220-C EAST JOPPA ROAD, SUITE 505  
TOWSON, MARYLAND 21286  
(410) 821-1690  
FAX (410) 821-1748



CONDOMINIUM PLAT - PHASE 7  
**WOODBROOK ON CHARLES CONDOMINIUM**  
NINTH ELECTION DISTRICT  
BALTIMORE COUNTY, MARYLAND  
FIFTH COUNCILMANIC DISTRICT

DATE	REVISIONS	JOB NO.	13494.01
		SCALE:	A6 SHOWN
		DATE:	8/8/10
		DRAWN BY:	EGH
		REVIEW BY:	SPK
		SHEET 2 OF 2	

BALTIMORE COUNTY CIRCUIT COURT (Condominium Plats, BA) Condominium Book SK 31, pp. 464-465, MSA\_51265\_1814. Date available 2010/04/21. Printed 06/17/2026.