

REVISIONS

LOTS 74 THRU 94 PER D.O.F.A. C.S.H. 9973-A
 LOT 76, DIM. COR. PER D.O.F.A. & S.H. 1109.
 LOT 66/68 PER APP. C.S.H. 77-097
 LOTS 65 THRU 79 COR. PER DEEDS & W.P.A. SHEET; C.S.H. 78-051
 LOTS 64 & 66/68 CHANGE PER DEEDS C.S.H. 75-107
 LOT 65 & 66/68 DIM. COR. PER DEED C.S.H. 88-528
 LOTS 59 & 101/105 PER D.O.F.P.L.S. C.S.H. 51-085
 LOT 115/116 LOT NO. CHANGED C.S.H. 01-006
 LOTS 92, 93 & 94 COR'D PER D.O.F.C.S.H. 05-171

LOT 5 DIV PER DEED C.S.H. 06-152
 LOTS 64 & 67/68 COR'D PER D.O. C.S.H. 07-079

502

ARMORY PLACE

502

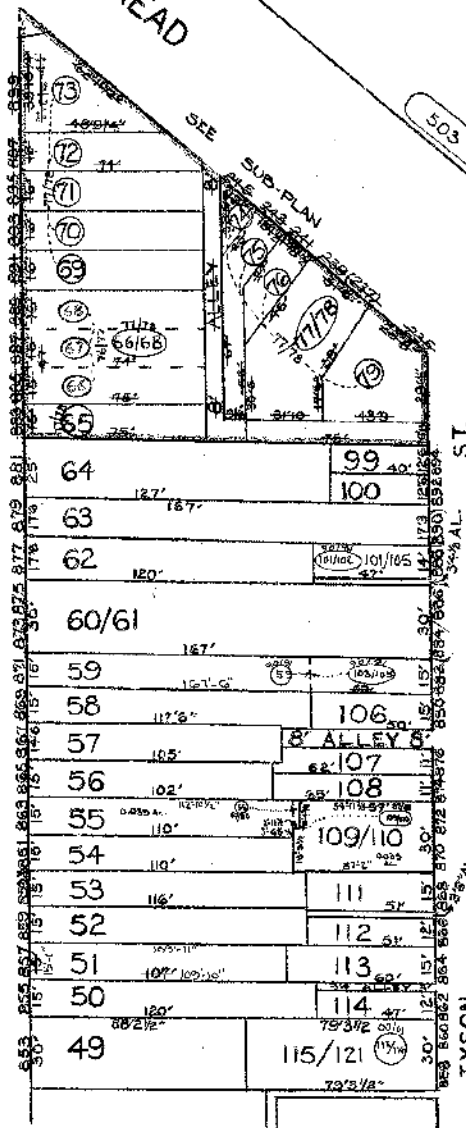
MATCH

ST.

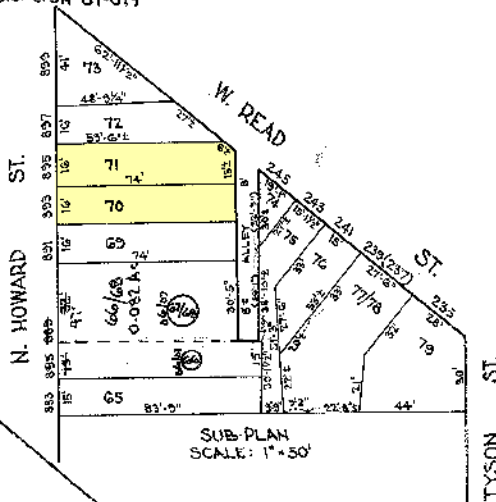
90'-2"

82'

N. HOWARD



SEE SHEET #2



510

515

SHEETS IN SET 3
 SHEET No. 1

CITY OF BALTIMORE
 DEPARTMENT OF PUBLIC WORKS

PROPERTY LOCATION DIVISION

WARD II SECTION 9
 BLOCK 509

SCALE 1"=50' DATE OCT. 1966

NOTICE

THIS IS A REAL PROPERTY PLAT AS PROVIDED FOR UNDER ARTICLE 76(d) OF THE CITY CHARTER. IT IS COMPILED FROM TITLE AND OTHER SOURCES AND IS NOT AN AUTHENTIC SURVEY.

TRACED BY PLW

LETTERED BY PLW

CHECKED BY