



CURVE DATA				
CURVE	Δ	RAD.	TAN.	CHORD
82-84	90°-00'	25 00'	25 00'	35 36'
83-85	90°-00'	25 00'	25 00'	35 36'
84-86	55°-16'	225 00'	117 81'	208 74'
85-87	55°-16'	175 00'	91 63'	162 36'
86-88	54°-15'	585 18'	299 79'	533 63'
87-89	38°-33'	635 18'	222 16'	419 41'
89-90	134°-03'	55 00'	129 71'	101 27'
91-93	253°-48'	55 00'	—	87 97'
93-94	45°-22'	55 00'	22 99'	42 42'
94-95	22°-16'	105 00'	20 67'	40 56'
95-96	83°-21'	55 00'	48 96'	73 14'
96-97	2°-23'	635 18'	13 21'	26 43'
98-100	40°-02'	425 00'	154 81'	290 91'
99-101	40°-02'	375 00'	136 59'	256 69'
100-102	90°-00'	25 00'	25 00'	35 36'
101-103	"	"	"	"
107-109	18°-43'	405 54'	66 83'	131 89'
108-110	18°-43'	455 54'	75 07'	148 15'
109-111	90°-00'	25 00'	25 00'	35 36'
110-112	"	"	"	"
114-115	7°-25'	4,017 14'	260 36'	519 64'
116-117	37°-39'	50 00'	17 05'	32 27'

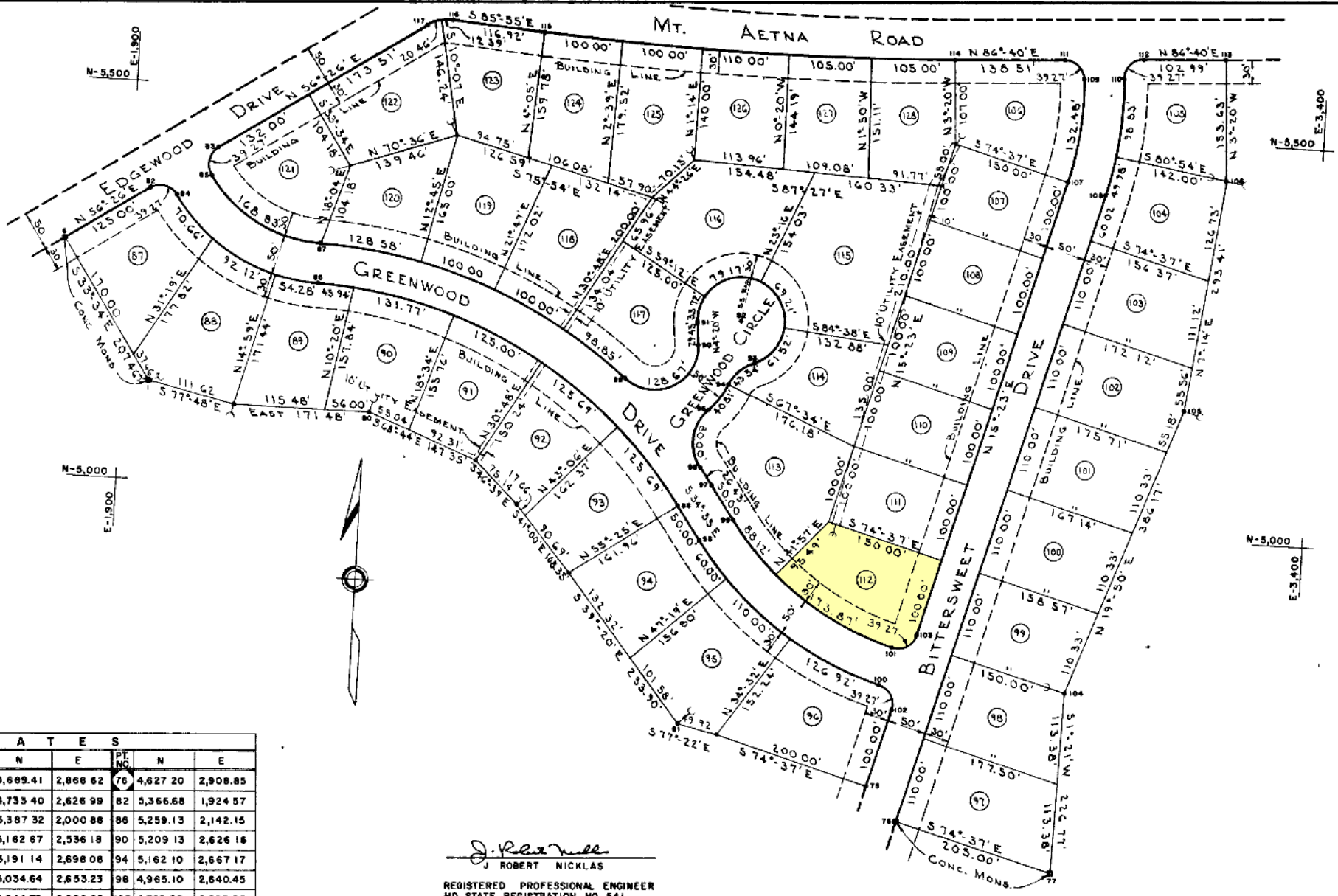
COORDINATES											
PT. NO.	N	E	PT. NO.	N	E	PT. NO.	N	E	PT. NO.	N	E
1	5,124.71	1,935.12	6	5,297.57	1,820.41	75	4,689.41	2,868.62	76	4,627.20	2,908.85
77	4,572.82	3,106.50	80	5,101.12	2,215.70	81	4,733.40	2,628.99	82	5,366.68	1,924.57
83	5,421.97	2,007.89	84	5,359.68	1,959.22	85	5,387.32	2,000.88	86	5,259.13	2,142.15
87	5,309.12	2,143.16	88	5,006.26	2,612.07	89	5,162.67	2,536.18	90	5,209.13	2,626.16
91	5,238.49	2,623.94	92	5,242.65	2,678.78	93	5,191.14	2,698.08	94	5,162.10	2,667.17
95	5,128.97	2,643.77	96	5,056.08	2,637.78	97	5,034.64	2,653.23	98	4,965.10	2,640.45
99	4,993.48	2,681.61	100	4,796.58	2,877.59	101	4,844.79	2,890.85	102	4,765.85	2,895.06
103	4,862.27	2,921.59	104	4,789.55	3,111.76	105	5,162.80	3,242.82	106	5,453.87	3,279.77
107	5,440.77	3,080.75	108	5,427.51	3,128.96	109	5,371.93	3,094.60	110	5,374.84	3,144.51
111	5,595.43	3,068.19	112	5,601.25	3,168.02	113	5,607.24	3,270.83	114	5,587.38	2,929.91
115	5,590.78	2,410.28	116	5,599.11	2,293.86	117	5,590.90	2,262.46			

NOTE:
SEE SECTION "B" FOR RESTRICTIONS WHICH ALSO APPLY TO THIS SECTION.

OWNERS STATEMENT

WE, THE UNDERSIGNED, HEREBY CERTIFY THAT THE REQUIREMENTS OF CHAPTER 1016, HOUSE BILL 459 OF THE LAWS OF MARYLAND, 1945, HAVE BEEN COMPLIED WITH IN REGARD TO THE MAKING OF THIS PLAT AND SETTING OF THE MARKERS

E D PLUMMER & SONS
By *Walter Louis Plummer*



J. Robert Nicklas
J. ROBERT NICKLAS
REGISTERED PROFESSIONAL ENGINEER
MD STATE REGISTRATION NO 541



SECTION "C"
OF
BRIGHTWOOD ACRES
EAST OF HAGERSTOWN, MARYLAND

SCALE: 1" = 100'
R.H.B. DATE: 1 JUNE 81
J. B. FERGUSON & CO., INC.
ENGINEERS CONSTRUCTORS
HAGERSTOWN, MARYLAND