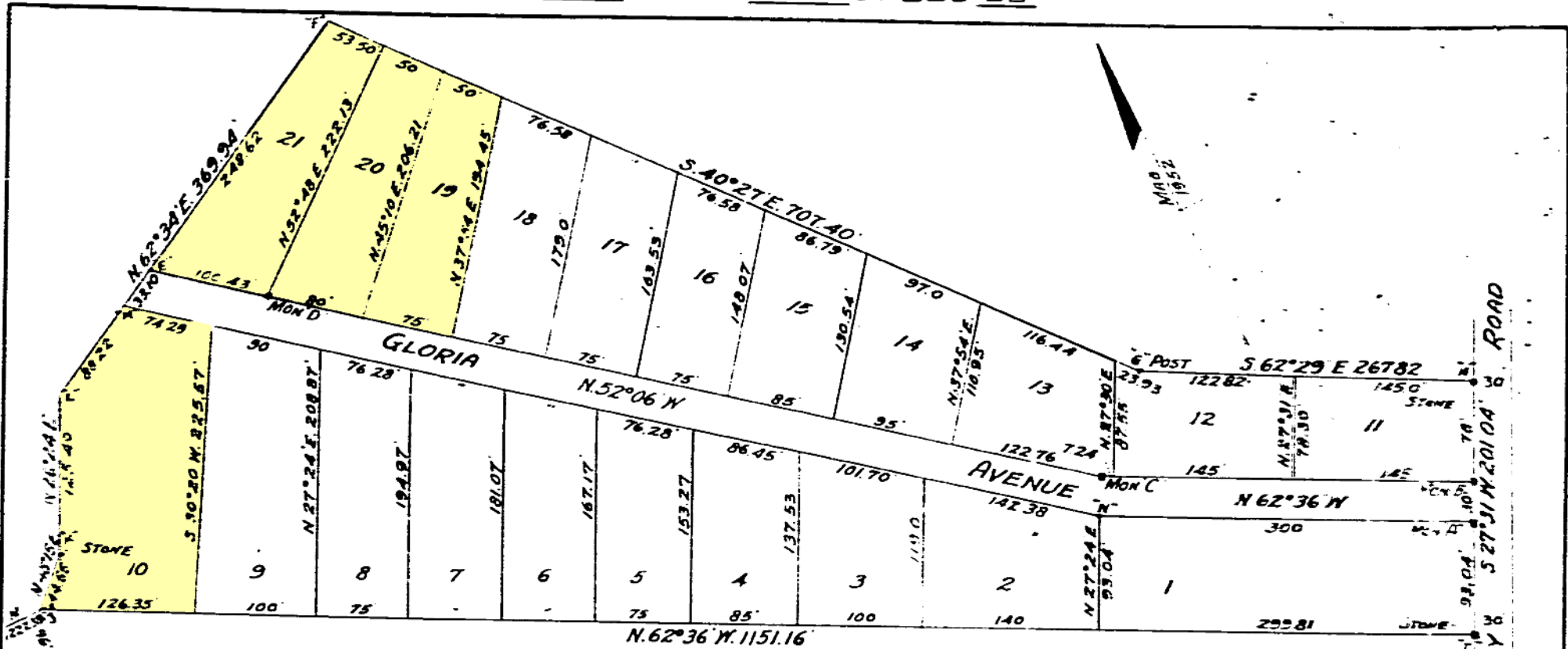


PLAT NO 1078 BOOK NO. 23 FOLIO 9 SPEED 22



COORDINATES		
STATION	NORTH	EAST
MON A	760.12	1186.97
MON B	806.73	1200.83
MON C	943.52	936.94
MON D	1362.93	398.18
E	1424.67	318.94
F	1537.99	540.24
POST G	999.64	899.35
STONE H	875.91	1236.87
STONE I	697.61	1143.98
J	1227.38	121.96
STONE K	1257.05	155.20
L	1369.37	218.96
M	1409.58	288.48
N	918.18	920.63

The requirements Sections 72A to 72D of the Annotated Code of Maryland, 1939 Edition (Title Clerks of Court, Subtitle Clerks of Circuit Courts) as far as they relate to the making of this plat and setting of the markers, have been complied with

 Owners of the land shown hereon

SCALE 1"=100'
SHIRKEY HEIGHTS
 5TH ELECTION DISTRICT
 ANNE ARUNDEL COUNTY, MD.
 MARCH 1952
Thomas Shuman
 REG ENGR No. 1110

Anne Arundel County Health Dept requirements have been met in the preparation of this plat

A.H.C. Health Officer