

107-12

SURVEYOR'S CERTIFICATE

I hereby certify that the plan shown hereon is correct; that it is a subdivision of part of the land obtained by Neighborhood III Joint Venture by two deeds, each dated April 26, 1978, and recorded among the Land Records of Prince George's County, Maryland, one deed from PSN, Inc., and recorded in Liber 4923 at Folio 77 and one deed from Northampton Three Corporation and recorded in Liber 4923 at Folio 89; that property line markers will be placed in accordance with Section 25-105(b)(7) of the Subdivision Regulations, Prince George's County Code. Area included in this plan of subdivision is 15.2550 acres of land.

April 18, 1980

*Harry L. Stoner, Jr.*  
Harry L. Stoner, Jr.  
Registered Land Surveyor  
Md. Reg. No. 2363

OWNER'S DEDICATION

We, Neighborhood III Joint Venture, a Maryland Joint Venture consisting of PSN, Inc., by Martin H. Poretsky, President, and Northampton Three Corporation by Seymour Friedman, Vice-President, and Eleanor T. Stambach, Assistant Secretary, owners of the property shown hereon and described in the Surveyor's Certificate, hereby adopt this plan of subdivision, dedicate the streets to public use, and grant to the Washington Suburban Sanitary Commission, their successors, agents, and assigns, easements and rights of way as shown for the construction, reconstruction, operation and maintenance of storm drains, sanitary sewers, water mains and appurtenances. There are no suits of action, leases, liens or trusts on the property included in this Plan of subdivision except certain deeds of trust and the parties in interest thereto have below indicated their assent.

Neighborhood III Joint Venture  
November 23, 1978

PSN, Inc., Venturer (SEAL)

*Harry S. Machalski*  
Witness

By: *Martin H. Poretsky*  
Martin H. Poretsky, President

Northampton Three Corp., Venturer (SEAL)

Attest: *Eleanor T. Stambach*  
Eleanor T. Stambach,  
Assistant Secretary

By: *Seymour Friedman*  
Seymour Friedman,  
Vice-President

We hereby assent to this plan of subdivision:

*Patricia Machalski*  
Witness

*James A. ...*  
Trustee

8/5/80  
176

PLAT - 7  
PART OF BLOCKS "J" AND "I"  
**NEWBRIDGE**  
KENT (13TH) DISTRICT

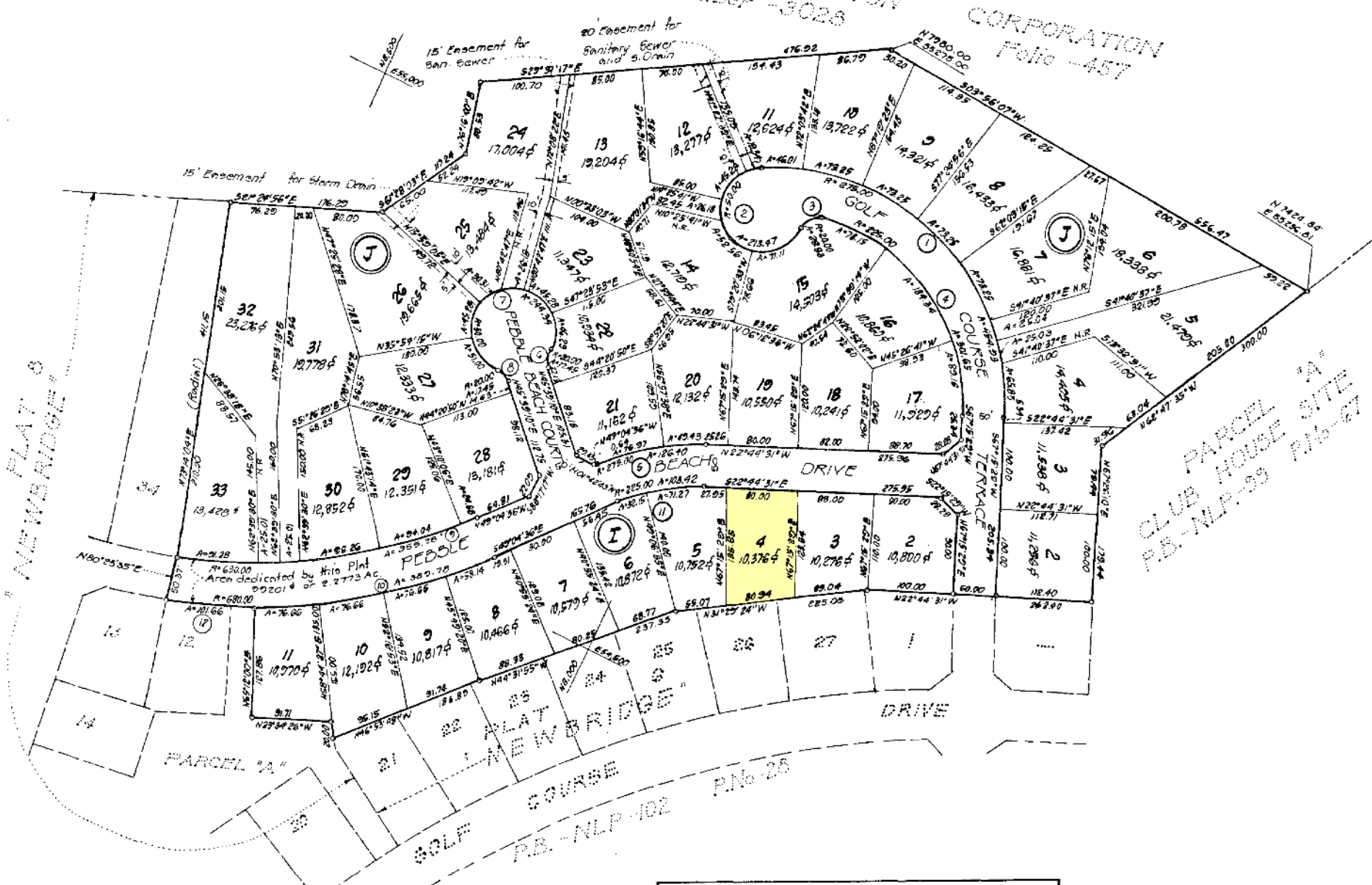
PRINCE GEORGE'S COUNTY, MARYLAND  
SCALE 1"=100'

NOVEMBER, 1978

GREENHORNE & O'MARA, INC.  
Engineers Architects Planners Surveyors  
6715 Kenilworth Avenue  
Riverdale, Maryland 20840

106003  
E.H. - V.H.  
5236-003

NORTHAMPTON  
Liber - 3028  
CORPORATION  
Folio - 457



CURVE DATA					
NO	RADIUS	DELTA	ARC	TAN	CHORD
1	276.00	34-47-00	454.93	228.97	404.80
2	50.00	244-37-23	213.47	-	84.51
3	20.00	82-35-34	28.83	17.57	26.40
4	223.00	76-48-48	301.65	178.35	273.56
5	276.00	26-20-05	126.40	64.34	185.29
6	20.00	45-50-31	17.45	9.32	16.00
7	50.00	270-52-23	244.34	-	64.25
8	20.00	45-50-41	17.45	9.32	16.00
9	530.00	32-18-40	355.28	182.60	350.59
10	680.00	32-50-33	389.75	200.41	384.47
11	225.00	26-20-05	103.42	52.64	182.81
12	680.00	08-33-57	101.22	50.92	161.56

Note: This land lies within a cluster development. Subdivision or resubdivision is strictly controlled, and development of land is permitted only in accordance with land uses indicated on the approved development plan.

Subject to a recreational facilities agreement dated June 3, 1980 and recorded in Liber 5265 at Folio 457.

Subject to a document of Declaration dated June 30, 1978 and recorded in Liber 4961 at Folio 834.

For Public Sewer and Water Systems Only.

Maryland-National Capital Park and Planning Commission  
Prince George's County Planning Board

APPROVED JUNE 26, 1980

*John B. Burcham Jr.*  
Chairman

*A. Eduardo Navarre*  
Secretary-Treasurer

MNCP&PC RECORD FILE NO. 5-80099

RECORDED 2-1-80  
PLAT BOOK NLP-77  
PLAT NO. 151