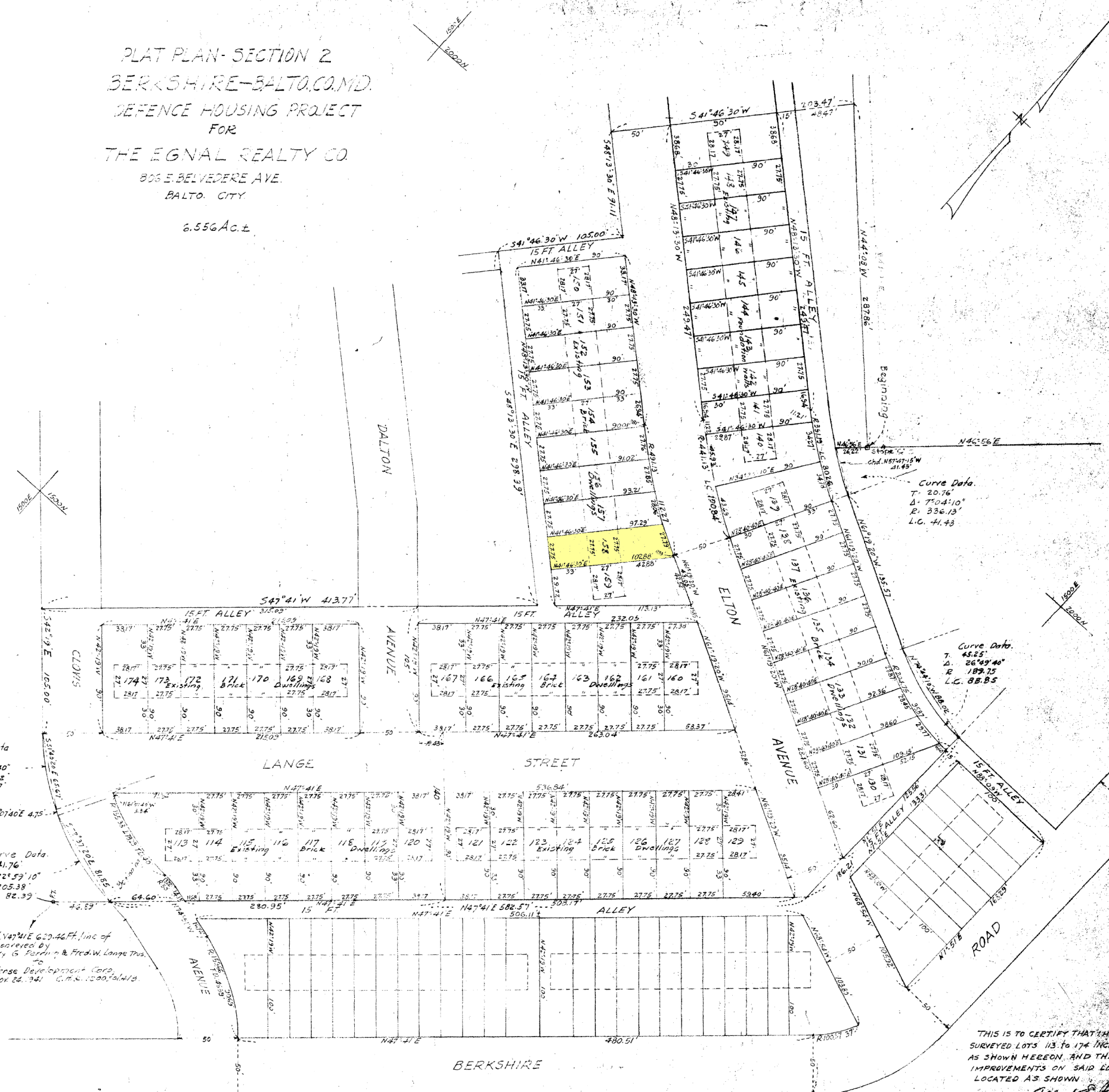


PLAT PLAN-SECTION 2
 BERKSHIRE-BALTO.CO.MD.
 DEFENSE HOUSING PROJECT
 FOR
 THE EGNAL REALTY CO
 806 E. BELVEDERE AVE.
 BALTO. CITY
 2.556 Ac.±



Curve Data
 T = 33.28'
 Δ = 104°40'
 R = 200.95'
 L.C. = 65.97'

Curve Data
 T = 41.76'
 Δ = 22°59'10"
 R = 205.38'
 L.C. = 82.39'

beg. of Var'ble 629.46 Ft. line of
 land conveyed by
 Henry G. Parham & Fred W. Lampe Trus.
 to
 Defense Development Corp.
 Nov. 24, 1941 G.M.C. 1000, 1011, 1012

Curve Data
 T = 20.76'
 Δ = 7°04'10"
 R = 336.13'
 L.C. = 41.43'

Curve Data
 T = 45.85'
 Δ = 20°49'40"
 R = 189.75'
 L.C. = 85.85'

THIS IS TO CERTIFY THAT I HAVE
 SURVEYED LOTS 113 TO 174 INCLUSIVE
 AS SHOWN HEREON, AND THE
 IMPROVEMENTS ON SAID LOTS ARE
 LOCATED AS SHOWN

Albert E. Pommer
 SURVEYOR & CIVIL ENGINEER
 SEPT. 29, 1948
 508 W. 101A

ALBERT E. POMMER
 SURVEYOR & CIVIL ENGINEER
 OFFICE: 508 W. 101A
 SCALE: 1" = 40'

BALTIMORE COUNTY CIRCUIT COURT (Plats) Plat Book Chk 13, p. 64, MSA, C2136-1363. Date available 1943/10/02. Printed 04/07/2025.