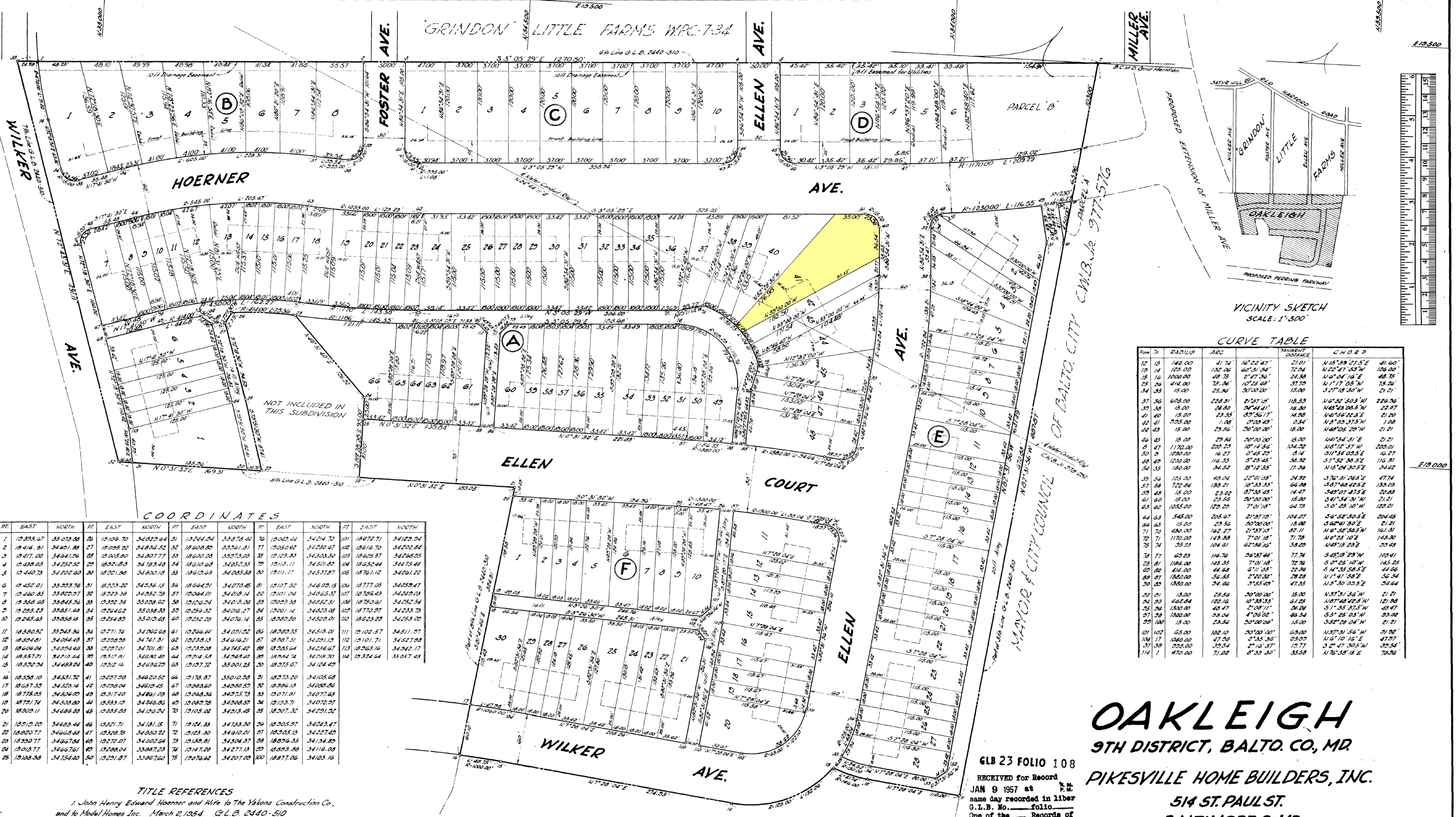


BALTIMORE COUNTY CIRCUIT COURT (Subdivision Plats, BA) Plat Book CLB 23, p. 108, MSA 51236-1608. Date available 1957/01/09. Printed 03/28/2025.



COORDINATES

Table with 10 columns: PT., EAST, NORTH, PT., EAST, NORTH, PT., EAST, NORTH, PT., EAST, NORTH. It lists coordinate points for each lot in the subdivision.

TITLE REFERENCES

- 1. John Henry Edward Hoerner and Wife to The Yelkna Construction Co., and to Model Homes Inc. March 2, 1934 G.L.B. 2440-510
2. James H. Coleman and Wife to the Mayor and City Council of Baltimore. September 28, 1936 C.W.B. Jr. 977-576
3. Plat of GRINDON LITTLE FARMS. Plat Book W.P.C. 7-34
4. William Hoerner to the Mayor and City Council of Baltimore, May 23, 1936 C.W.B. Jr. 978-292

The streets and/or roads shown hereon and the mention thereof in deeds are for the purpose of description only and the same are not intended to be dedicated to public use; the fee simple title to the beds thereof is expressly reserved in the grantors of the deed to which this plat is attached, their heirs and assigns.

Coordinates and bearings shown on this plat are referred to the system of coordinates established in the Baltimore County Metropolitan District and are based on the following traverse stations:
*8874 E 10 448.56 N 33 788.96
18875 E 19 228.12 N 33 591.34

CURVE TABLE with columns: From, To, RADIUS, ARC, TANGENT DISTANCE, CHORD. It provides data for various curves in the subdivision.

OAKLEIGH
9TH DISTRICT, BALTO. CO., MD.
PIKESVILLE HOME BUILDERS, INC.
514 ST. PAUL ST.
BALTIMORE 2, MD.

RECEIVED for Record
JAN 9 1957 at 3:11 P.M.
same day recorded in liber
G.L.B. No. folio
One of the Records of
Baltimore County and ex-
amined, per

George L. Agnew

APPROVED: [Signatures]
DIRECTOR OF THE PLANNING BOARD
COUNTY ROADS ENGINEER
DEPUTY STATE AND COUNTY'S HEALTH OFFICER

PIKESVILLE HOME BUILDERS, INC.
Melvin Blalock
David W. Bohner