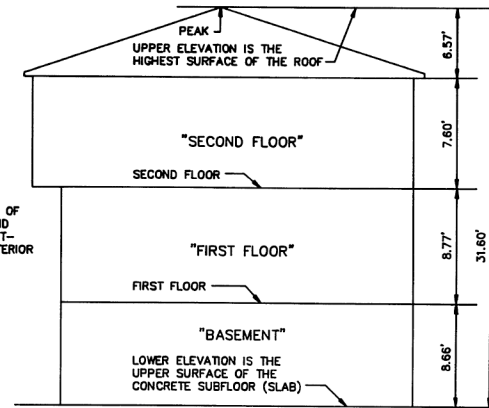


SECOND FLOOR

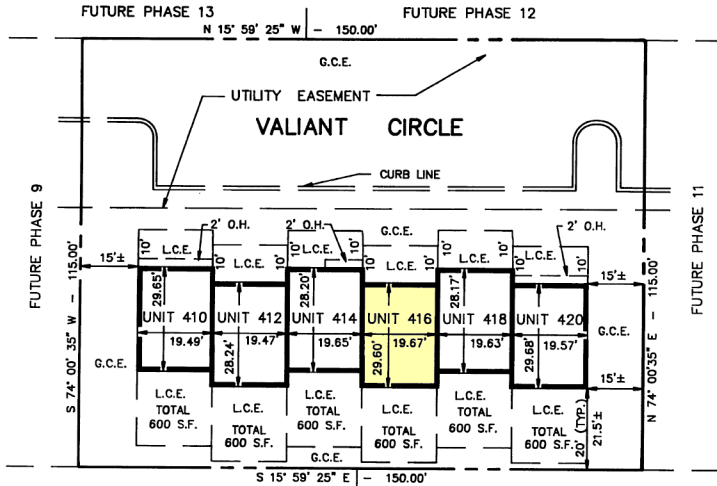
NOTE: CONDOMINIUM AREA IS TO OUTER FACE OF WALL FRONT AND BACK AND OUTER END UNITS AND TO INTERIOR FACE OF SHEET-ROCK OR FOUNDATION WALL ALONG INTERIOR UNITS.



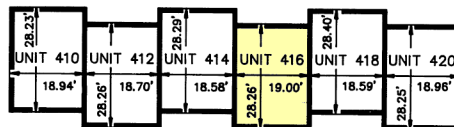
TYPICAL SECTION
NOT TO SCALE

ELEVATION SCHEDULE		
UNITS	LOWER ELEVATION	UPPER ELEVATION
410	75.61	107.21
412	75.58	107.18
414	75.61	107.21
416	78.30	107.90
418	76.28	107.88
420	76.30	107.90

NOTE: DATUM 0=MEAN SEA LEVEL



FIRST FLOOR PLAN



BASEMENT FLOOR

AREA SCHEDULE		
UNIT	FLOOR	AREA
410	BASE	535 S.F.
	1	578 S.F.
	2	591 S.F.
412	BASE	528 S.F.
	1	550 S.F.
	2	557 S.F.
414	BASE	526 S.F.
	1	554 S.F.
	2	575 S.F.
416	BASE	537 S.F.
	1	582 S.F.
	2	557 S.F.
418	BASE	528 S.F.
	1	553 S.F.
	2	555 S.F.
420	BASE	536 S.F.
	1	581 S.F.
	2	593 S.F.

GIBRALTAR BUILDING & LOAN ASSOCIATION

Lawrence B. Goldstein, Sec 8/24/86
LAWRENCE B. GOLDSTEIN DATE

GRAY'S LUCK JOINT VENTURE

Frank J. Scott 8/21/86
FRANK J. SCOTT, MANAGING PARTNER DATE

THE RYLAND GROUP INC.

Michael H. Ruehr 8/24/86
MICHAEL H. RUEHR, VICE PRESIDENT DATE

LEGEND

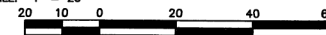
- L.C.E. LIMITED COMMON ELEMENT
- G.C.E. GENERAL COMMON ELEMENT
- PHASE LINE
- DIMENSION LINE
- L.C.E. LINE
- O.H. OVER HANG

NOTE: FOR ACCESS TO THIS PHASE OF DEVELOPMENT SEE THE DECLARATION OF CROSS EASEMENTS AS RECORDED IN THE RECORDS OF ANNE ARUNDEL COUNTY BOOK 4043 PAGE 206.

PLAT 2 OF 2
CONDOMINIUM PHASE 10 (UNITS 410 - 420)
(6 UNITS)

GRAY'S LUCK CONDOMINIUM

TAX MAP 15 BLOCK 18 PARCEL 963
3rd ASSESSMENT DISTRICT ANNE ARUNDEL CO., MD
SCALE: 1" = 20'



LANDTECH CORP.

a land planning & engineering corp.
2861 RIVA RD. SUITE 620 RIVA 400 OFFICE PARK
ANNAPOLIS, MARYLAND 21401
(301) 266-3033

SUBDIV. NO. 84-085 PROJECT NO. 86-172

PUBLIC WATER AND SEWER SYSTEMS

APPROVED:
HEALTH DEPARTMENT OF
ANNE ARUNDEL COUNTY, MARYLAND
Thomas Reed 8/24/86
COUNTY HEALTH OFFICER DATE

APPROVED:
OFFICE OF PLANNING AND ZONING
ANNE ARUNDEL COUNTY, MARYLAND
Dorance Becke-Kundler 8/26/86
PLANNING AND ZONING OFFICER DATE

SURVEYOR'S CERTIFICATION

William A. Teller 8-26-86
WILLIAM A. TELLER DATE
REGISTERED PROPERTY LINE SURVEYOR
MD REG. NO. 217-B

