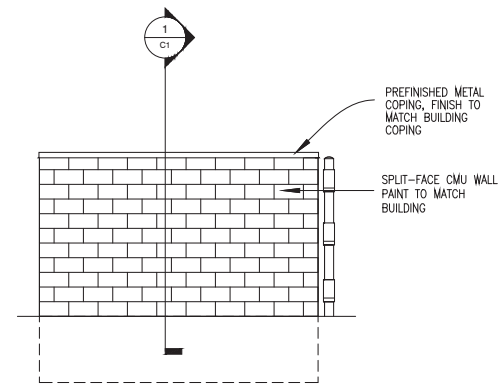


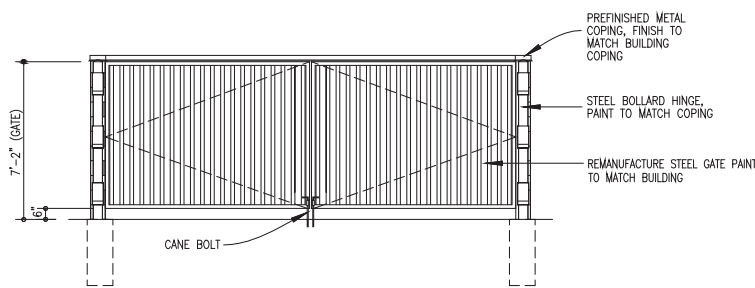
SITE LEGEND

- Section Line
- Gas Line
- Overhead Electric Line
- Underground Electric Line
- Stormwater Sewer Line
- Telephone Line
- Water Line
- Sanitary Line
- Fence Line
- LOT LINE
- PROPERTY LINE
- FH = Fire Hydrant
- LP = Light Pole
- SIGN
- GM = GAS METER
- MH = Sanitary Sewer Manhole
- WM = Water Meter
- XFMR = Transformer
- EXISTING CONTOURS
- NEW CONTOURS
- CENTELINE
- R/W RIGHT-OF-WAY
- PP POWER POLE
- TJB TELEPHONE JUNCTION BOX
- GP GUARD POST
- EJB ELECTRIC JUNCTION BOX
- C.I. CONCRETE INLET
- † HB HOSE BIBB



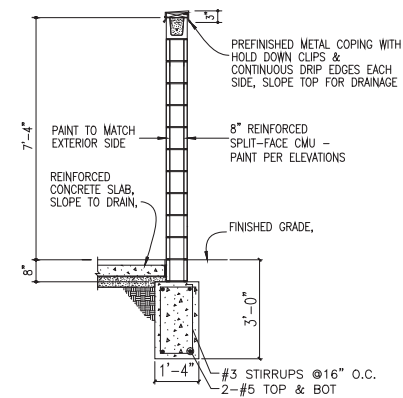
TRASH ENCLOSURE ELEVATION

Scale 1/4" = 1'-0"



TRASH ENCLOSURE ELEVATION

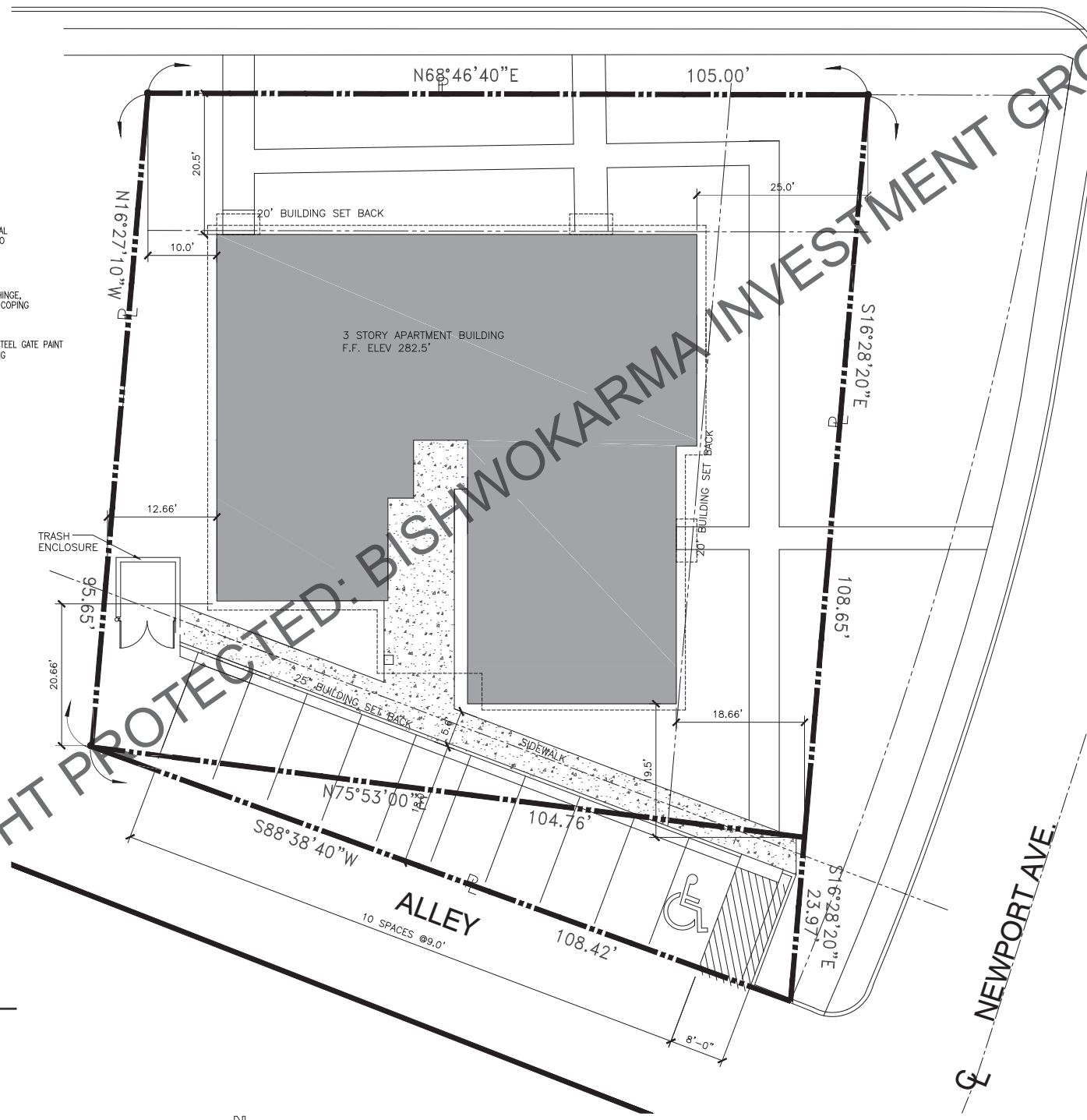
Scale 1/4" = 1'-0"



SECTION

Scale 1/2" = 1'-0"

ROLAND HEIGHTS AVE.



SITE PLAN

Scale 1" = 10.0'



SITE ANALYSIS

EXISTING LOT AREA	0.274 Ac.±
PROPOSED BUILDING AREA	3886 SQ.FT.
IMPERVIOUS AREA	7946 SQ.FT.
PROPOSED PARKING SPACES	10

LEGAL DESCRIPTION

WARD 13 SECTION 15 BLOCK 3575A LOT 045

GENERAL NOTES

- Contractor shall obtain all permits including land disturbance, right-of-way, hauling, etc., with public works prior to construction as applicable.
- Excavated material that is not immediately loaded and hauled off site shall be stockpiled on site. Contractor shall provide the appropriate BMP (silt fence, compost sock, gravel filter bags, waddles, etc.) fully surrounding the stockpile area to protect adjacent inlets or areas, etc. until such time that stockpile is removed from site.
- Good housekeeping including all spill response shall be done.
- The new building must maintain proper clearances from Electric company overhead electric lines.
- Provide irrigation for new landscaping.
- All construction traffic, temporary traffic control devices, and pavement markings shall conform to the requirements of the latest manual of the UNIFORM TRAFFIC CONTROL DEVICES.
- The contractor shall provide all materials, tools, equipment, and labor as necessary to install and maintain adequate erosion control, keep streets clean of mud and debris, and prevent soil from leaving the project site.
- All water service installations including backflow devices are subject to field verification and approval by the Water Department Inspector.
- Sanitary sewer improvements - The site will utilize the existing sanitary sewer on the South side of the building.
- Water main improvements - The site will utilize the existing 8" water main on the East side of the building.
- Storm water improvements - the site will utilize the existing storm water catch basins.
- Connection to the sewer line shall be made with a cut-in eye.

ROLAND HEIGHTS APARTMENTS

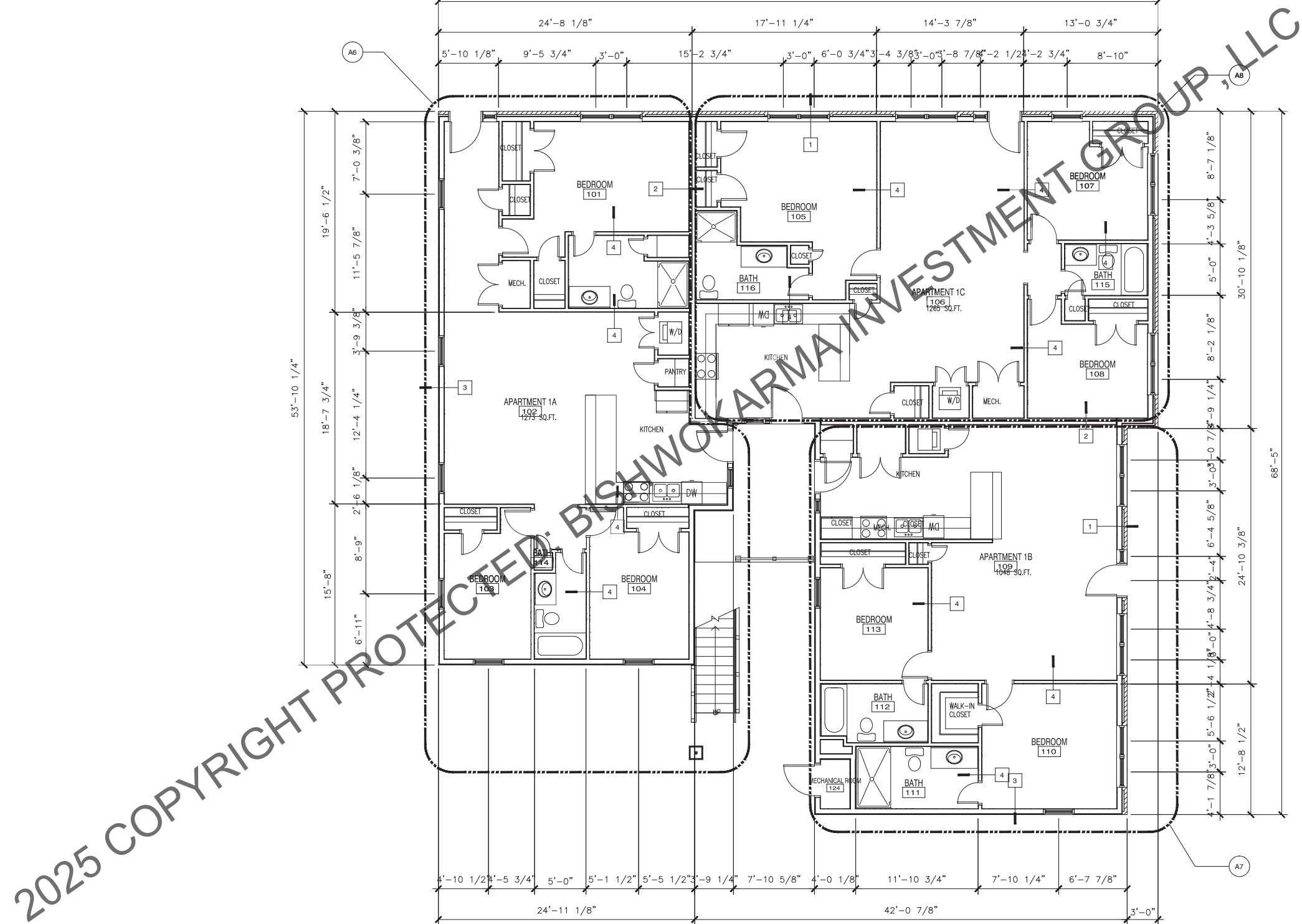
1301 ROLAND HEIGHTS AVE.
BALTIMORE, MD 21211

date 12-1-23
drawn by R.E.S.
checked by
revised

sheet no.

C-SD-1

SITE



FIRST FLOOR PLAN
Scale 3/16"=1'-0"

ROLAND HEIGHTS APARTMENTS

1301 ROLAND HEIGHTS AVE.
BALTIMORE, MD 21211

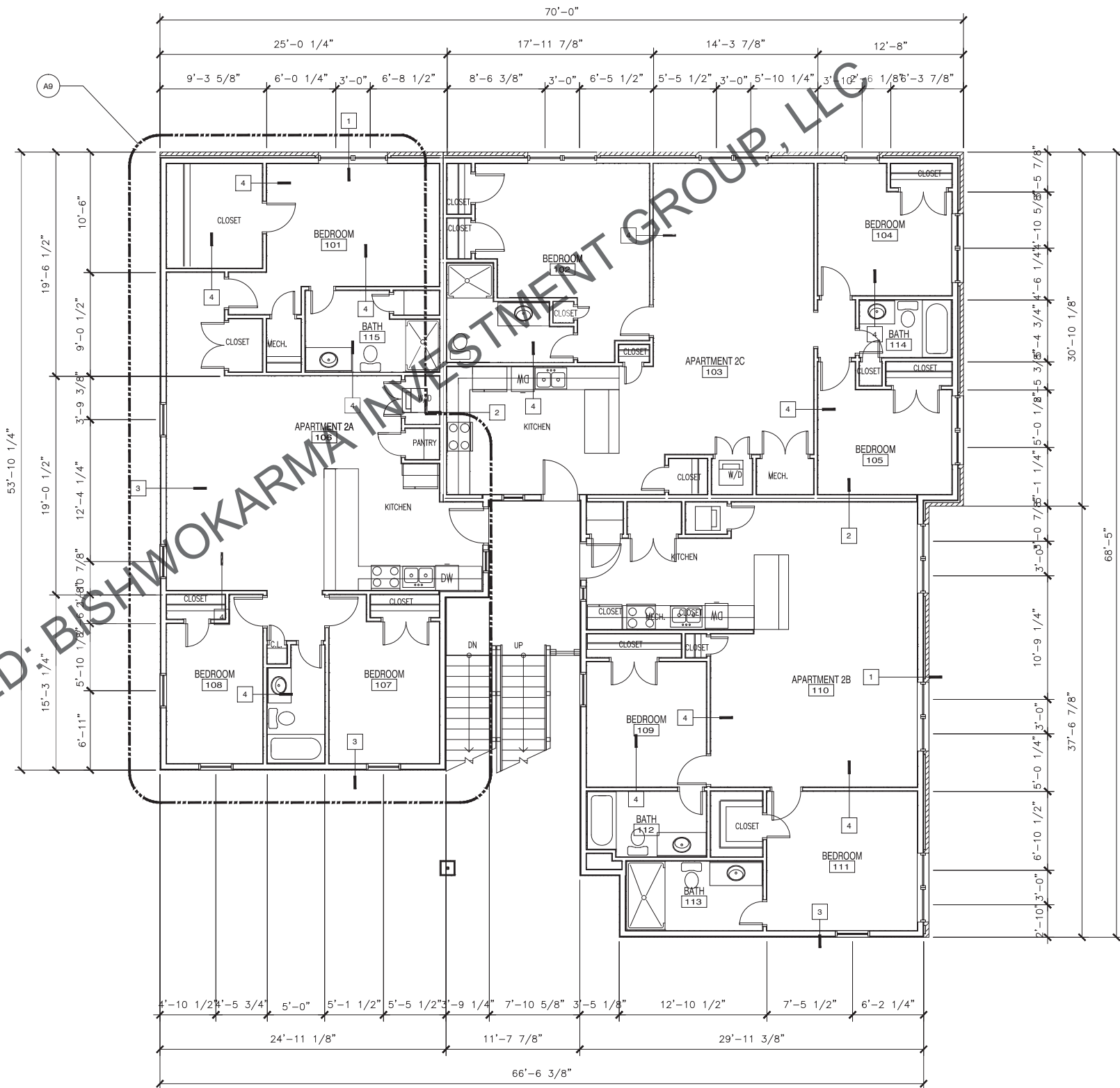
date 12-1-23
drawn by R.E.S.
checked by D.W.H.
revised

sheet no.

A-1.00

FLOOR PLAN

2025 COPYRIGHT PROTECTED: BISHWOKARMA INVESTMENT GROUP, LLC



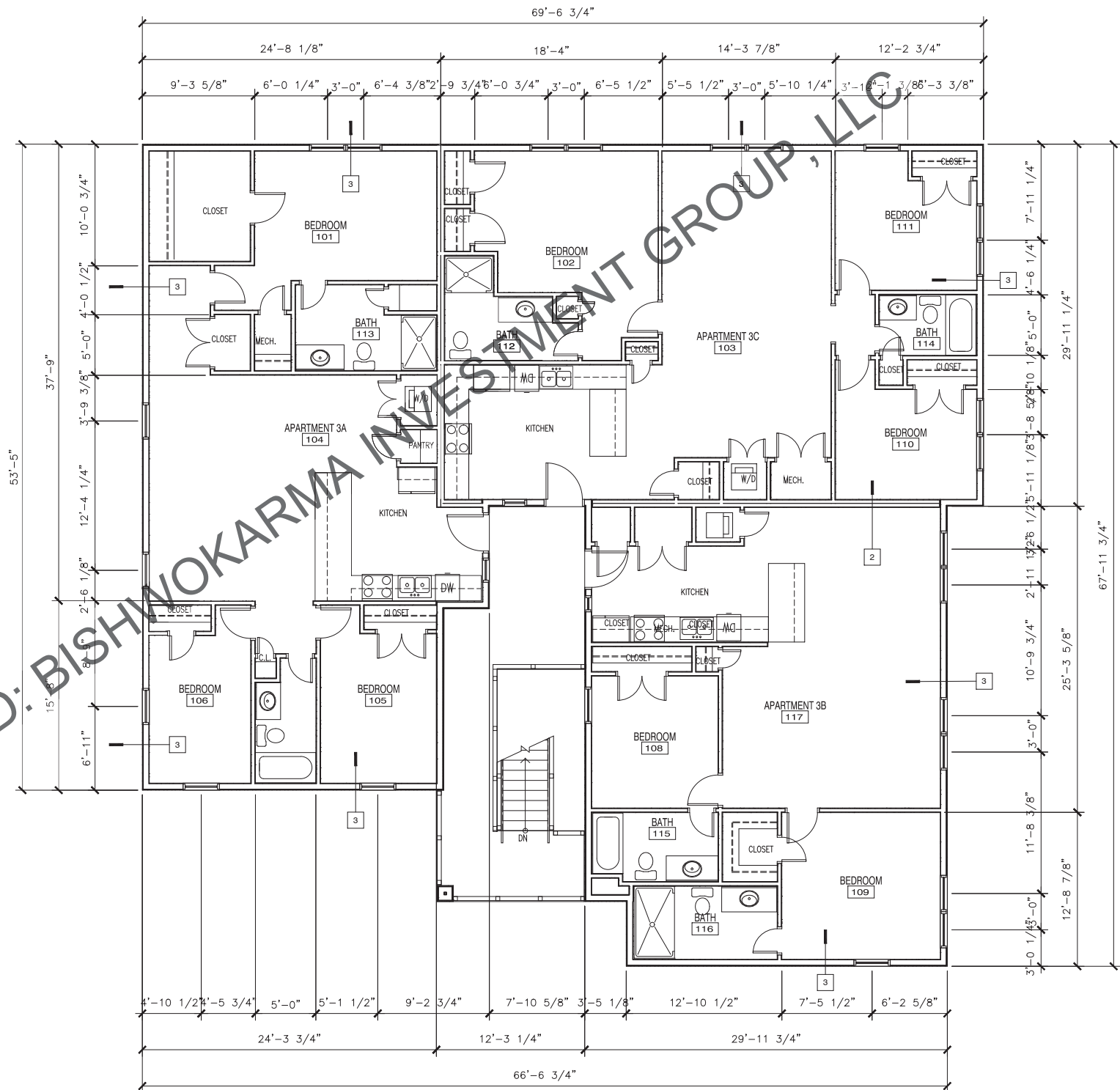
SECOND FLOOR PLAN
Scale 3/16" = 1'-0"

ROLAND HEIGHTS APARTMENTS
1301 ROLAND HEIGHTS AVE.
BALTIMORE, MD 21211

date 12-1-23
drawn by R.E.S.
checked by D.W.H.
revised

sheet no.
A-1.01
2ND FLOOR PLAN

2025 COPYRIGHT PROTECTED: BISHWOKARMA INVESTMENT GROUP, LLC



THIRD FLOOR PLAN
Scale 3/16" = 1'-0"

ROLAND HEIGHTS APARTMENTS

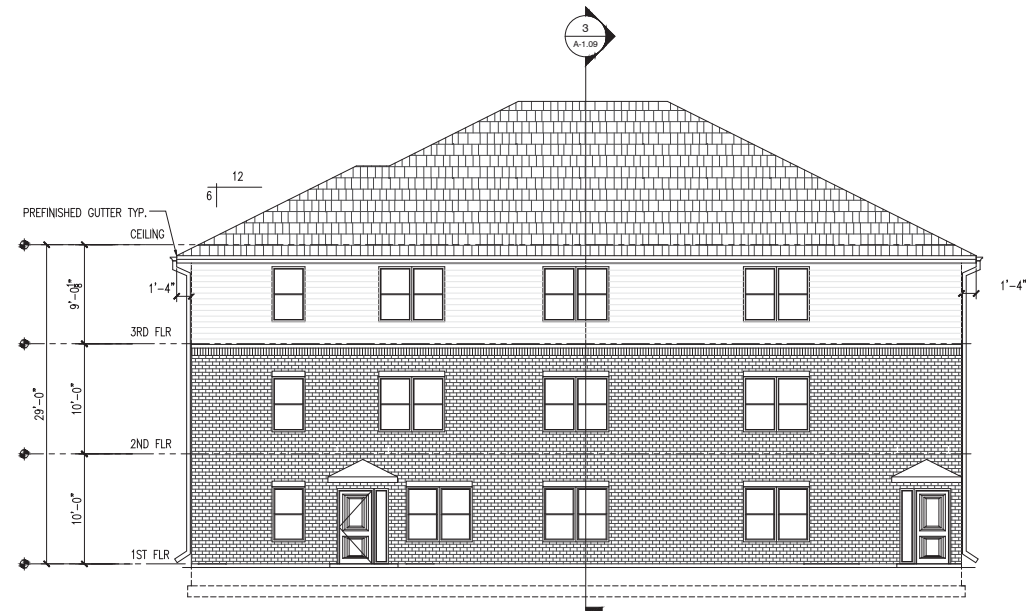
1301 ROLAND HEIGHTS AVE.
BALTIMORE, MD 21211

date 12-1-23
drawn by R.E.S.
checked by D.N.H.
revised

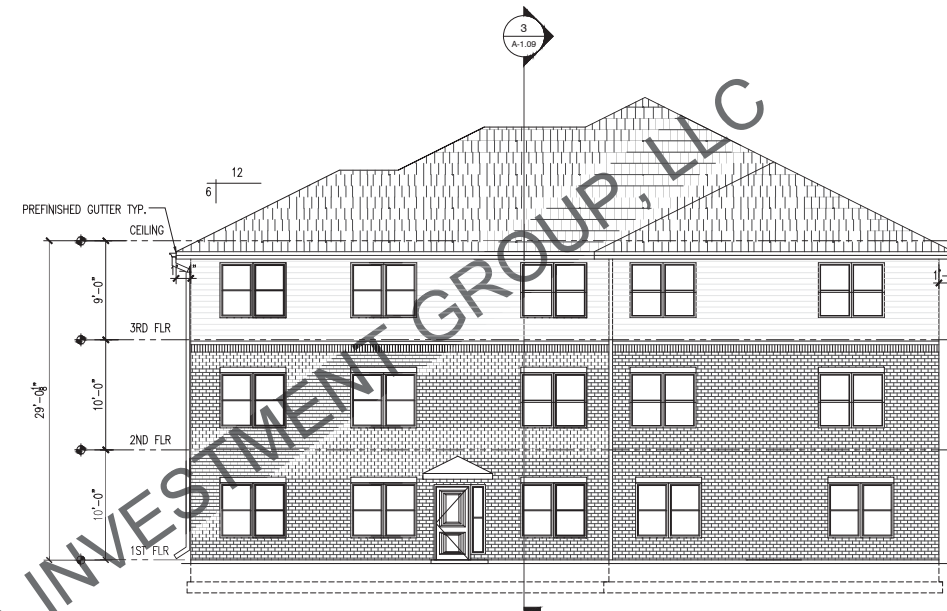
sheet no.

A-1.02

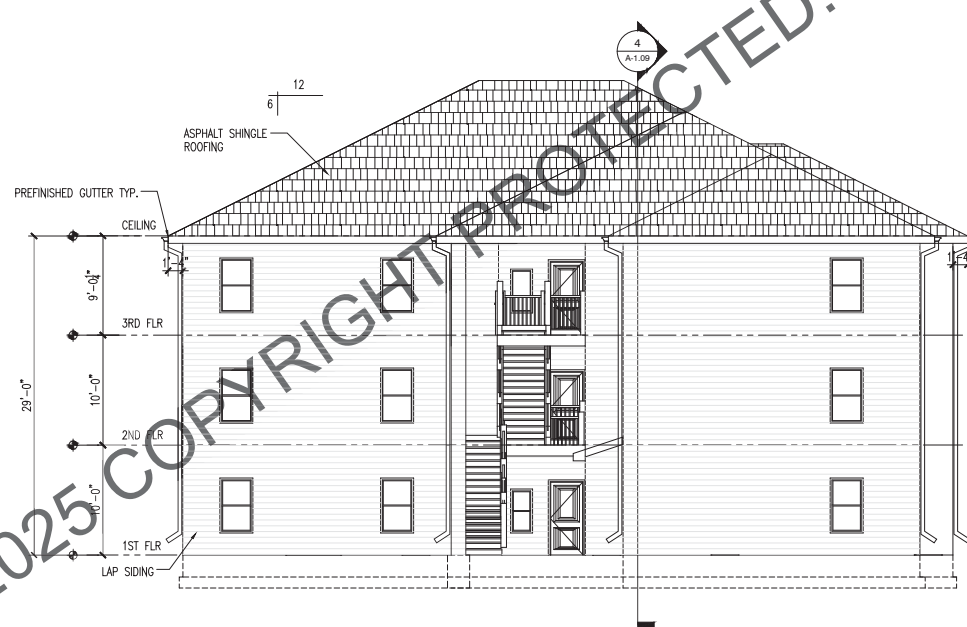
3RD FLOOR PLAN



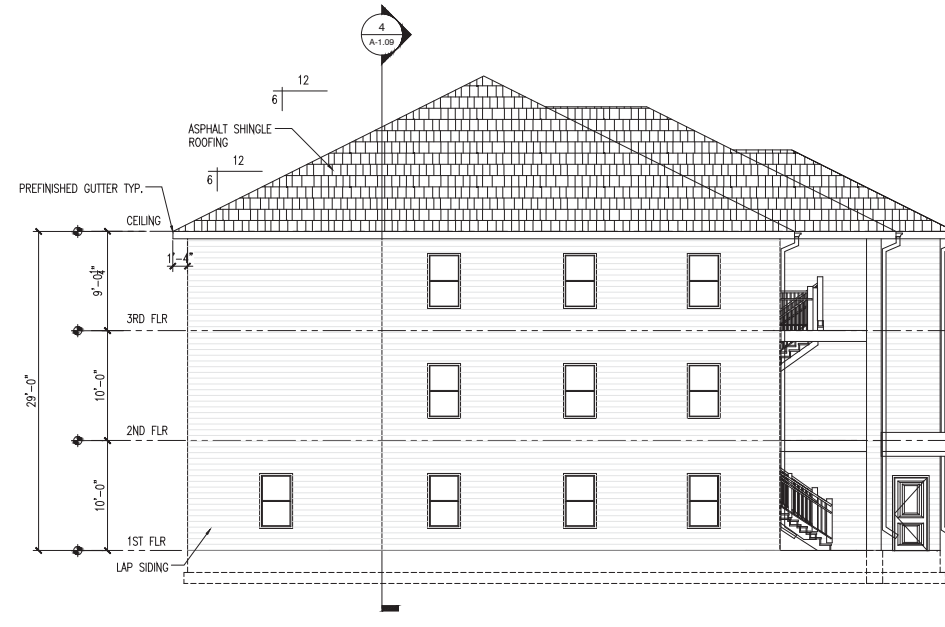
NORTH ELEVATION
SCALE 1/8"=1'-0"



EAST ELEVATION
SCALE 1/8"=1'-0"



SOUTH ELEVATION
SCALE 1/8"=1'-0"



WEST ELEVATION
SCALE 1/8"=1'-0"

ROLAND HEIGHTS APARTMENTS

1301 ROLAND HEIGHTS AVE.
BALTIMORE, MD 21211

date 12-1-23
drawn by R.E.S.
checked by D.W.H.
revised

sheet no.

A-1.03

ELEVATIONS