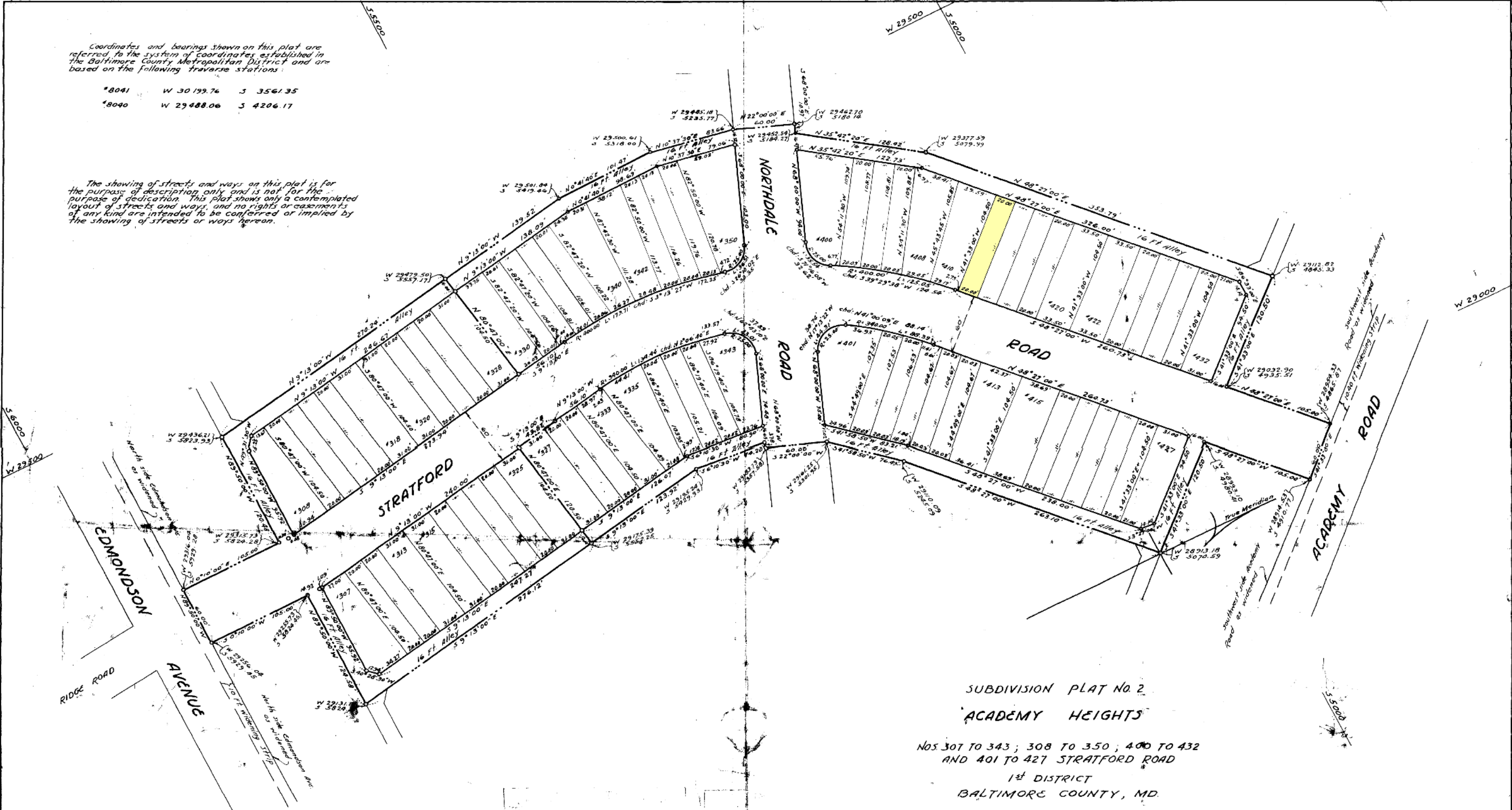


Coordinates and bearings shown on this plat are referred to the system of coordinates established in the Baltimore County Metropolitan District and are based on the following traverse stations:

*8041 W 30199.76 S 3561.35
 *8040 W 29488.06 S 4206.17

The showing of streets and ways on this plat is for the purpose of description only and is not for the purpose of dedication. This plat shows only a contemplated layout of streets and ways, and no rights or easements of any kind are intended to be conferred or implied by the showing of streets or ways hereon.



SUBDIVISION PLAT NO. 2
 'ACADEMY HEIGHTS'

NOS 307 TO 343 ; 308 TO 350 ; 400 TO 432
 AND 401 TO 427 STRATFORD ROAD
 1ST DISTRICT
 BALTIMORE COUNTY, MD.

THE CARDENAS COMPANY
 Morris Cardenas
 PRES.

Albert E. Horner

THE CARDENAS COMPANY
 11 E FAYETTE STREET
 BALTIMORE, MARYLAND

APPROVED
 Apr 28, 1950
 DATE
 Director of the Planning Commission

APPROVED
 Apr 28, 1950
 DATE
 County Roads Engineer



ALBERT E. HORNER
 BALTIMORE COUNTY, MARYLAND
 3-14-1950

BALTIMORE COUNTY CIRCUIT COURT (Plats) Plat Book TBS 16, p. 38, MSA, C21136_175. Date available 1950/06/13. Printed 10/07/2024.