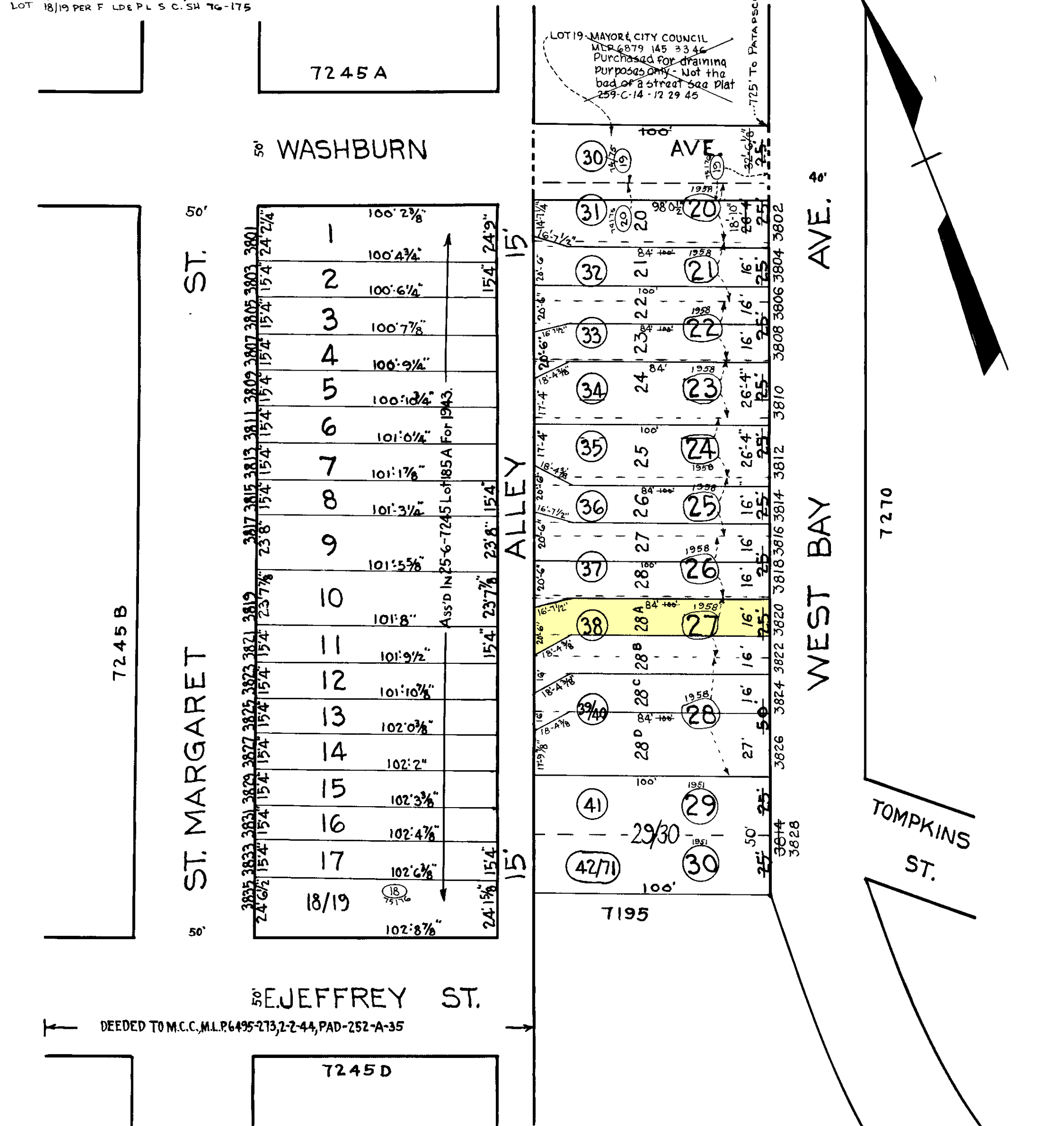


# REVISIONS

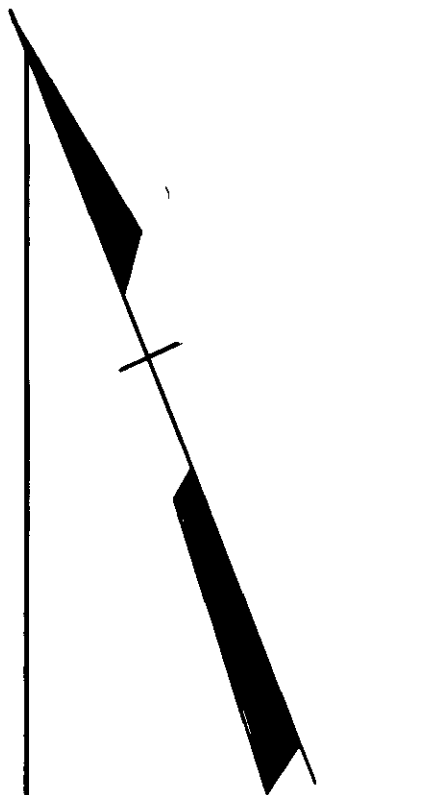
LOTS 1 to 18 & 19 to 30 PER APP & P.S. C SH. 2911 & 2912  
 Lots 29 & 30 Cons'd Per App 1056 C Sh 5505  
 Lots 20 To 28 Div. Per. App. C. Sh. 7849  
 LOTS 19 TO 28 D PER DEED PLS, C. SH. 105.  
 LOT 18/19 PER F LDE PLS C. SH. 76-175



1	100' 2 3/8"	154'	24' 2"
2	100' 4 3/4"	154'	24' 2"
3	100' 6 1/4"	154'	24' 2"
4	100' 7 7/8"	154'	24' 2"
5	100' 9 1/4"	154'	24' 2"
6	100' 10 3/4"	154'	24' 2"
7	101' 0 1/4"	154'	24' 2"
8	101' 1 7/8"	154'	24' 2"
9	101' 3 1/4"	154'	24' 2"
10	101' 5 5/8"	154'	24' 2"
11	101' 8"	154'	24' 2"
12	101' 9 1/2"	154'	24' 2"
13	101' 10 3/8"	154'	24' 2"
14	102' 0 3/8"	154'	24' 2"
15	102' 2"	154'	24' 2"
16	102' 3 3/8"	154'	24' 2"
17	102' 4 7/8"	154'	24' 2"
18/19	102' 6 1/8"	154'	24' 2"
	102' 8 7/8"	154'	24' 2"

ALLEY

LOT 19 - MAYOR & CITY COUNCIL  
 M.C.P. 6879 145 33 46  
 Purchased for draining  
 purposes only - Not the  
 bed of a street see Plat  
 259-C-14-12 29 45



NOTE:~  
 SEE POCKET FOLDER 1158, H.A. 25-843 &  
 H.A. 25-844 FILED IN P.L.S. DEED FILE WITH  
 RHB 3195-255, 12-27-74 & 3204-96, 2-3-75.  
 AGAINST LOT 19. (FOR LOTS 19 THRU 28D).

**NOTICE**  
 THIS IS A REAL PROPERTY PLAT AS PROVIDED  
 FOR UNDER ARTICLE 76(d) OF THE CITY CHARTER  
 IT IS COMPILED FROM TITLE AND OTHER  
 SOURCES AND IS NOT AN AUTHENTIC SURVEY

TRACED BY G.A. Smith.  
 LETTERED BY  
 CHECKED BY

NOTE (30) LOT N° BLOCK 25-6-7245 FOR 1943.

CITY OF BALTIMORE  
 DEPARTMENT OF PUBLIC WORKS  
 BUREAU OF PLANS & SURVEYS  
 PROPERTY LOCATION DIVISION

WARD 25 SECTION 6  
 BLOCK 7245-C

SCALE 40' = 1" DATE Mar, 1943.