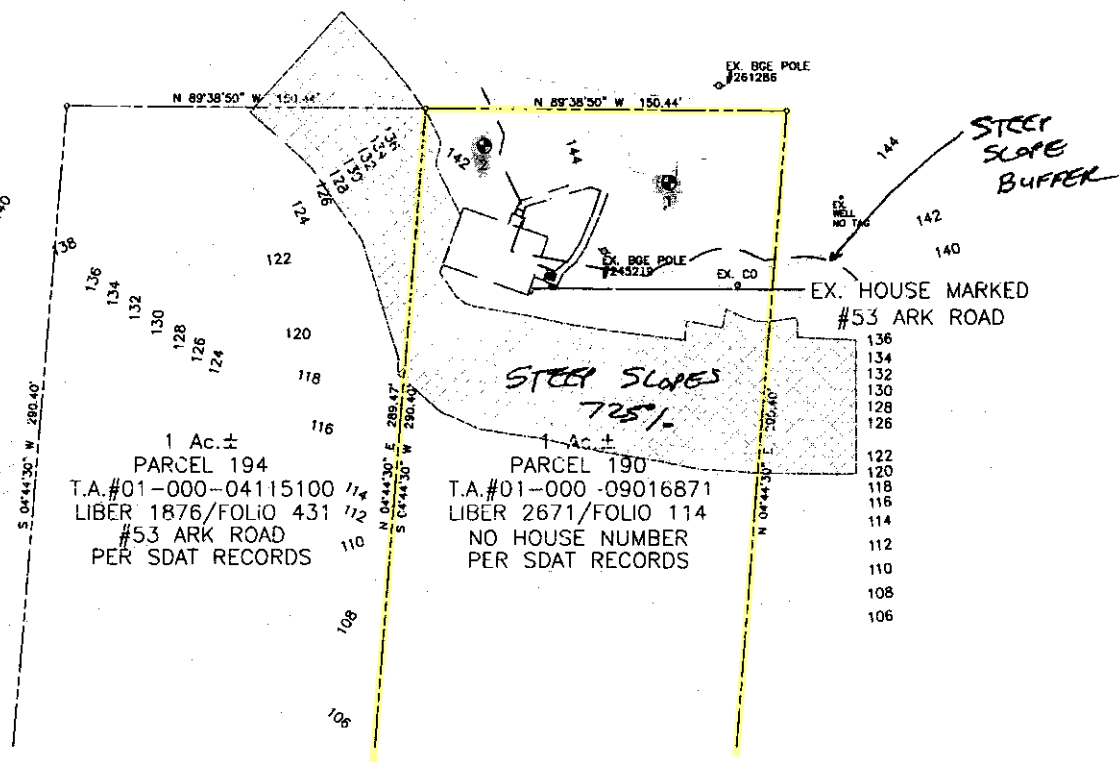


144

142

140



1 Ac. ±
 PARCEL 194
 T.A.#01-000-04115100
 LIBER 1876/FOLIO 431
 #53 ARK ROAD
 PER SDAT RECORDS

1 Ac. ±
 PARCEL 190
 T.A.#01-000-09016871
 LIBER 2671/FOLIO 114
 NO HOUSE NUMBER
 PER SDAT RECORDS

STEEP
 SLOPE
 BUFFER

STEEP SLOPES
 7251

EX. HOUSE MARKED
 #53 ARK ROAD

EX. BGE POLE
 #261286

EX. BGE POLE
 #243219

EX. CO

S 04°44'30" W 280.40'

N 89°38'50" W 150.44'

N 89°38'50" W 150.44'

N 04°44'30" E 280.40'
 S 04°44'30" W 280.40'

N 04°44'30" E 280.40'

138

136

134

132

130

128

126

124

122

120

118

116

114

112

110

108

106

144

142

140

136

134

132

130

128

126

122

120

118

116

114

112

110

108

106