

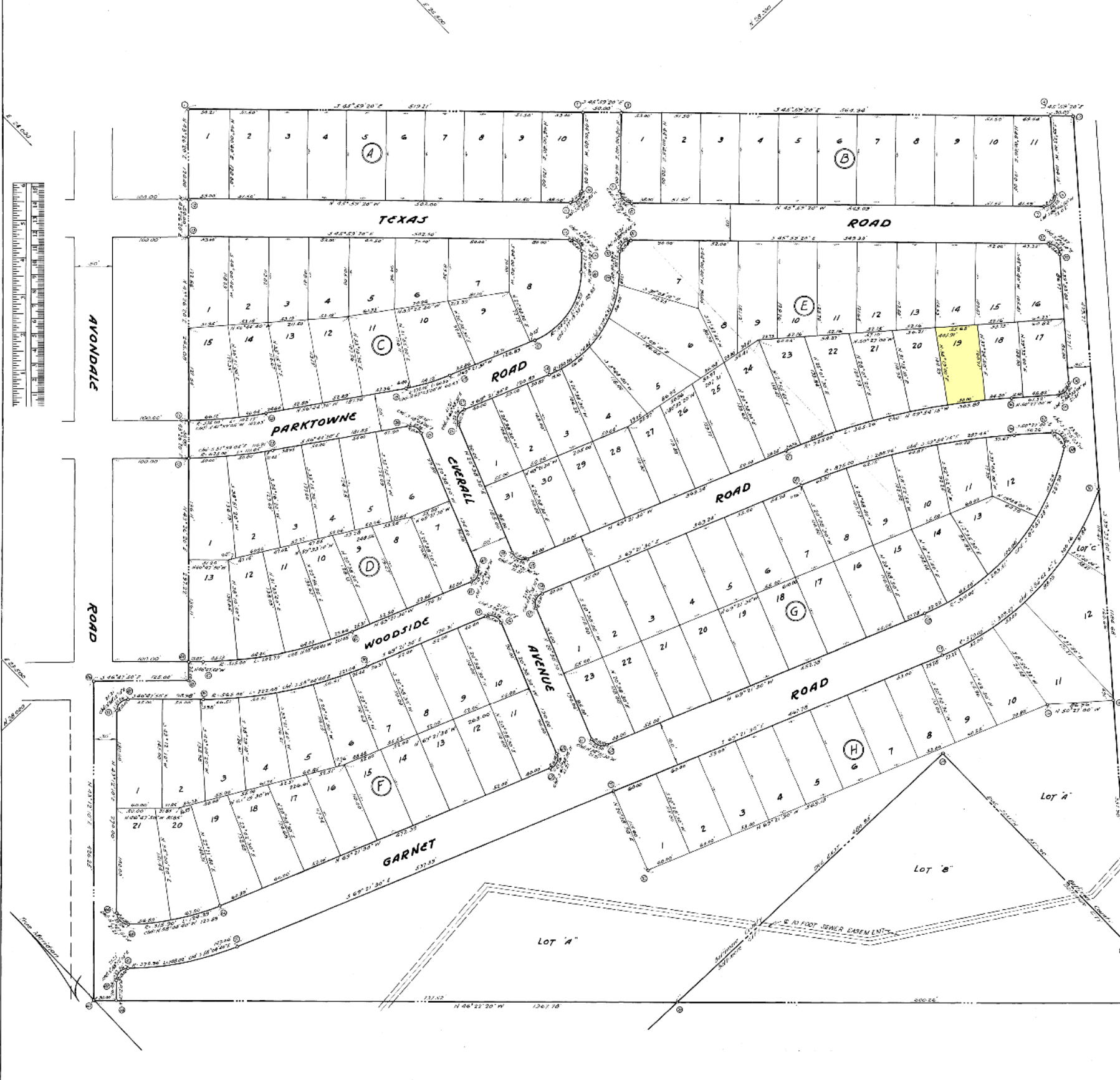
COORDINATE TABLE

Point	East	North	Point	East	North
1	24 191.51	26 433.78	46	23 247.25	27 761.51
2	24 253.93	26 473.00	47	23 241.71	27 716.12
3	24 291.09	26 452.24	48	23 282.94	27 761.78
4	24 398.20	27 445.14	49	23 255.09	27 767.02
5	25 015.46	27 474.83	50	23 421.70	27 721.16
6	24 981.29	27 585.44	51	23 402.07	27 477.10
7	24 902.50	27 548.70	52	24 410.40	27 647.70
8	24 519.50	27 741.33	53	24 287.61	27 688.15
9	24 518.74	27 962.76	54	24 074.94	27 643.90
10	24 469.26	27 957.49	55	24 472.48	27 513.73
11	24 461.77	27 957.11	56	24 471.16	27 369.59
12	24 100.00	28 146.39	57	24 789.31	27 337.58
13	24 045.42	28 210.27	58	24 768.59	27 315.60
14	24 477.43	27 741.15	59	24 423.19	27 278.41
15	24 427.35	27 510.50	60	24 289.36	27 236.82
16	24 468.29	27 510.17	61	24 290.43	27 257.34
17	24 501.11	27 398.06	62	23 243.80	27 476.97
18	24 127.99	27 500.48	63	23 244.32	27 644.29
19	24 124.12	27 946.07	64	23 946.07	27 643.70
20	23 577.15	28 049.05	65	23 377.46	27 636.10
21	23 497.11	28 137.33	66	23 376.90	27 719.30
22	23 869.73	28 056.08	67	23 276.89	27 658.09
23	23 949.71	28 021.22	68	23 287.16	27 644.79
24	23 101.78	27 517.48	69	23 316.29	27 643.70
25	24 107.29	27 939.45	70	23 376.48	27 644.46
26	24 151.43	27 889.18	71	23 461.31	27 576.40
27	24 170.36	27 891.49	72	23 944.20	27 297.14
28	24 283.49	27 849.71	73	24 401.56	27 122.24
29	24 436.35	27 804.43	74	24 701.41	27 239.40
30	24 443.38	27 845.29	75	24 478.30	27 035.46
31	24 400.34	27 845.57	76	24 456.25	27 016.91
32	24 479.45	27 823.70	77	24 424.44	27 329.10
33	24 800.75	27 844.54	78	23 851.60	27 122.52
34	24 771.41	27 371.11	79	24 311.95	27 122.52
35	24 710.30	27 369.10	80	24 311.95	26 727.62
36	24 705.02	27 408.14	81	24 245.49	26 711.36
37	24 446.11	27 560.52			
38	24 034.56	27 490.49			
39	24 625.82	27 710.01			
40	24 039.02	27 727.64			
41	24 019.70	27 718.89			
42	23 640.35	27 710.50			
43	23 409.32	27 625.46			
44	23 475.56	27 694.40			
45	23 448.37	27 620.25			

The streets and/or roads as shown hereon and the location thereon, in blocks and for the purpose of description only and the same are not intended to be dedicated to public use. The same simple title to the lots shown is expressly reserved in the Charter of the Board to which this plat is attached, their lines and angles.

Coordinates and bearings shown on this plat are referred to the system of coordinates established by the Baltimore City Topographical Survey Commission and are based on the following stationing:

*2353 E 24 311.952 N 24 551.329
 *2454 E 24 311.952 N 27 125.522



OWNER'S CERTIFICATE
 The restrictions of Section 224 and 225 of Article 17 of the Annotated Code of Maryland, 1926, Chapter 102 of the Acts of 1946, as amended by Chapter 584 and 702 of the Acts of 1948, are acknowledged, filed, existing taxes, or to be hereon the making of the plat, and acting at the request, have been paid in full.

THE PARKVIEW DEVELOPMENT CO. INC.
 State of Maryland
 By: *Joseph M. Hays* Vice President

ENGINEER'S CERTIFICATE
 I, ALBERT E. FOHRER, a Registered Professional Engineer and Land Surveyor in the State of Maryland, do hereby certify that the hereon shown plan was made and the plat thereon is correct in accordance with the provisions of Article 17 of the Annotated Code of Maryland, 1926, Chapter 102 of the Acts of 1946, as amended by Chapter 584 and 702 of the Acts of 1948, and subsequent Acts, and I am a duly licensed engineer.

Albert E. Fohrer
 Registered Professional Engineer and Land Surveyor

Alan M. Maynard

SUBDIVISION PLAN
 OF
 "PARKVIEW"
 14th DISTRICT
 BALTIMORE COUNTY, MD.



APPROVED
 April 17th 1951
 Date
J. L. Smith
 COUNTY ROBES ENGINEER

APPROVED
 Apr. 11, 1951
 Date
Malcolm H. Bise
 CHAIRMAN OR SECRETARY OF THE PLANNING COMMISSION

THE PARKVIEW DEVELOPMENT CO. INC.
 4317 YORK ROAD
 BALTIMORE, MARYLAND

Drawn by: J.M.C.
 Checked by: J.M.C.
 Date: Oct. 8, 1950

ALBERT E. FOHRER
 REGISTERED ENGINEER & LAND SURVEYOR
 OFFICE: 850 PARK AVE. BALTO., MD.
 SCALE: 1" = 50' ISSUED: Oct. 8, 1950