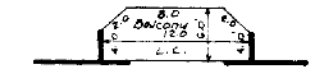


TYPICAL TERRACE DETAIL
No Scale



TYPICAL BALCONY DETAIL
No Scale

LEGEND : L.C. = Limited Common Elements
G.C. = General Common Elements

NOTE: 1) The dimensions of each unit shown hereon represents the distance from the unexposed surface of one wall to the unexposed surface of the opposite wall
2) Lower Limits: Upper surface of the unfinished sub-floor
3) Upper Limits: Lower surface of the unfinished ceiling

NOTE: The Unit number is preceded by an address on Hanover Parkway, Greenbelt, Maryland.

FILED

AUG 22 1983
#12205-A
Normal Clerk
Clerk of the Circuit Court
Prince Georges County, Md.

PLAT OF CONDOMINIUM SUBDIVISION
PHASE THIRTEEN

PLANS FOR BUILDINGS *6058, *6060, *6062, *6064 & *6066

HUNTING RIDGE
CONDOMINIUM

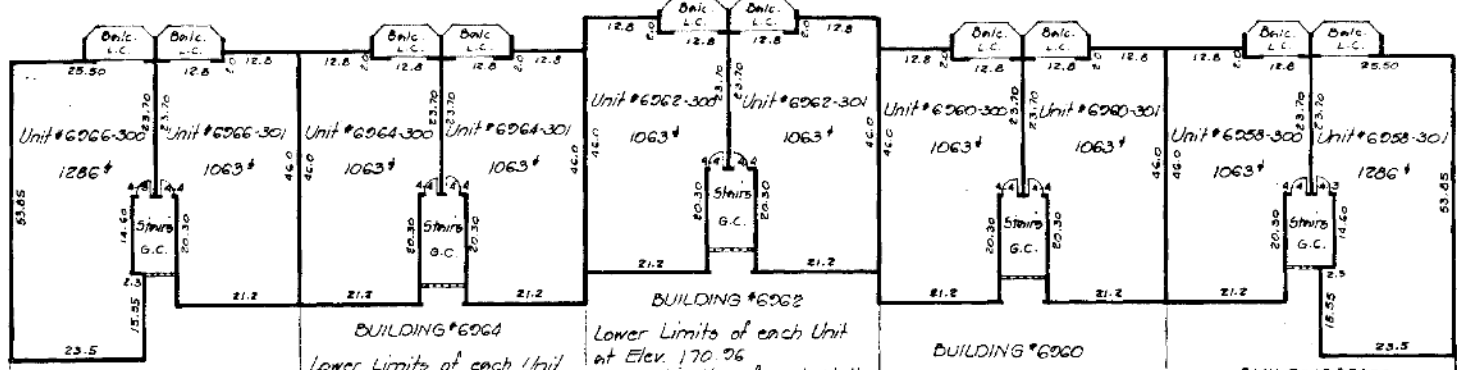
PRINCE GEORGE'S COUNTY, MARYLAND

June, 1983

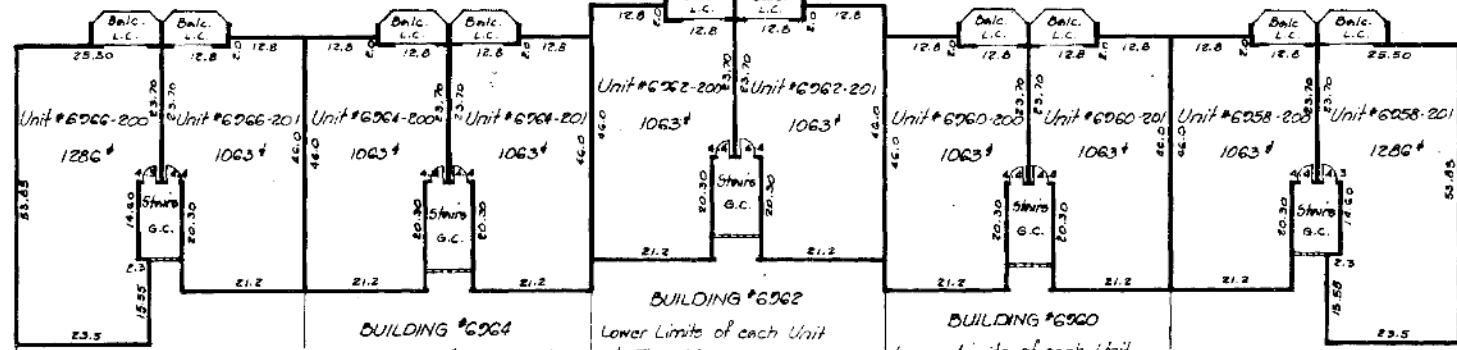
DEPARTMENT OF ASSESSMENT AND TAXATION
APPROVED
8/19/83
DATE

GREENHORNE & O'MARA, INC
Engineers Architects Planners Surveyors
9001 Edmonston Road
Greenbelt, Maryland 20770

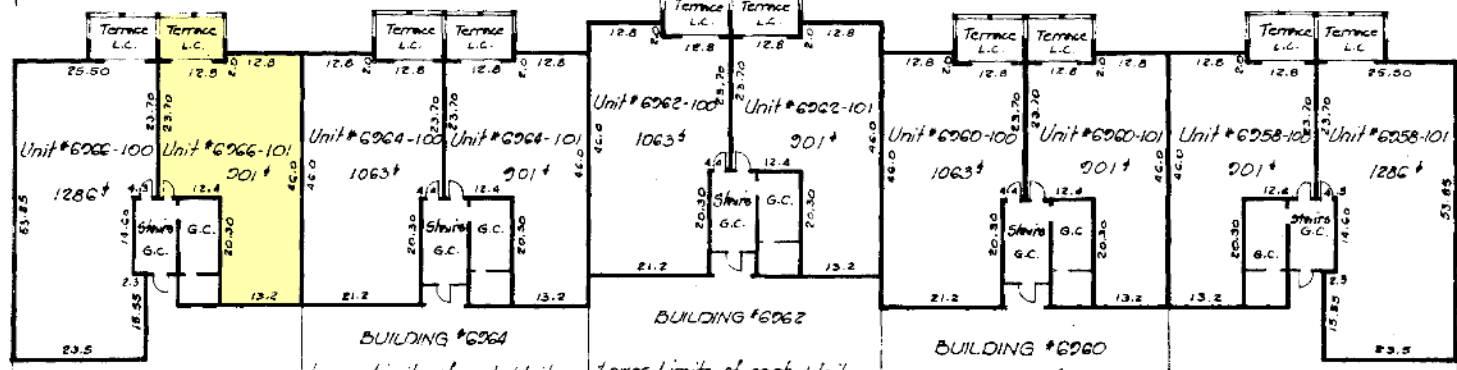
Sheet 3 of 3
E43504
E.O.B.
6487-P-00-15



SECOND FLOOR



FIRST FLOOR



GROUND FLOOR

Recorded 8-22-83
Plat Book NRP 117
Map No. 57