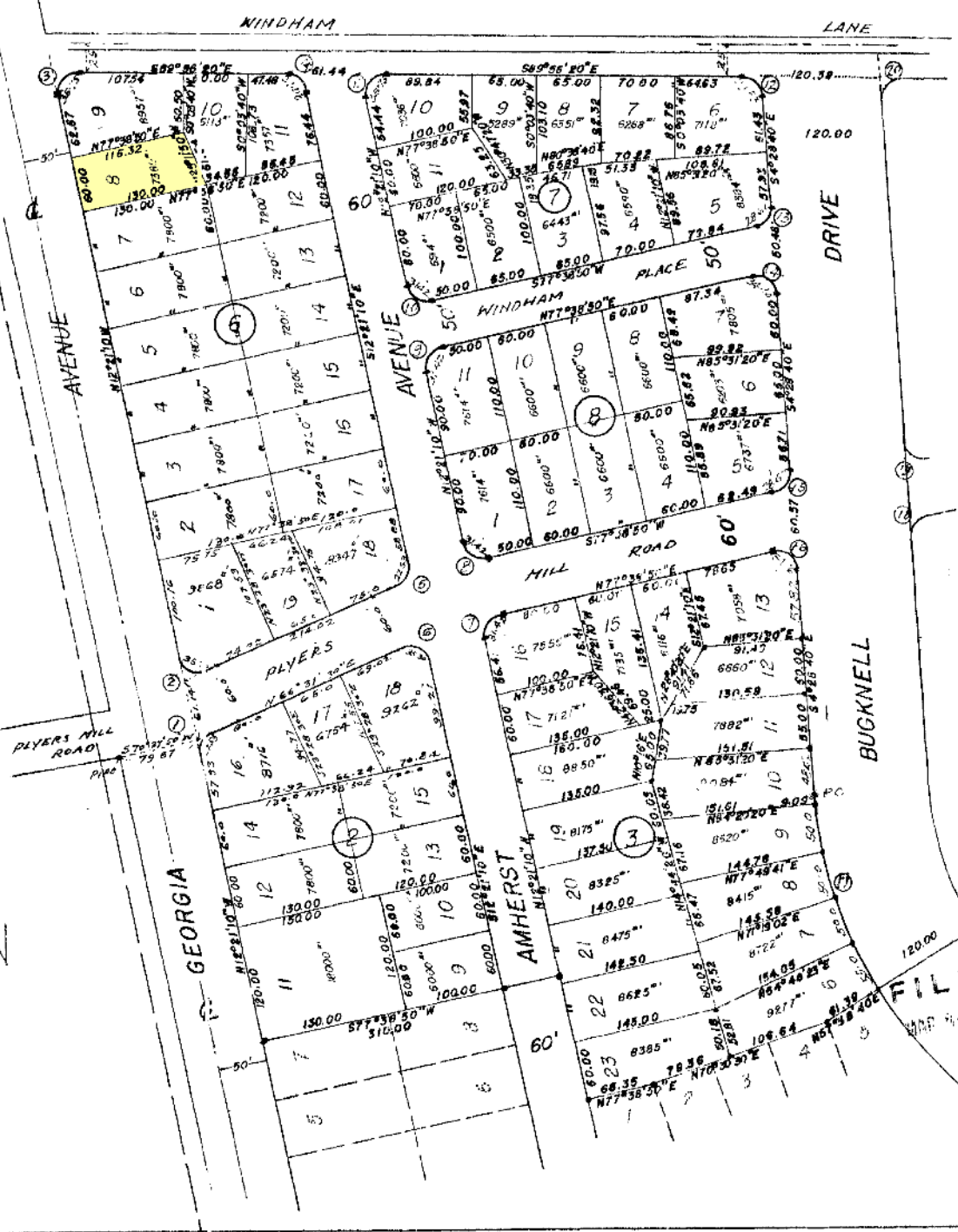


LOTS 9 TO 19 INCL., BLOCK 2
AND
LOTS 6 TO 23 INCL., BLOCK 3
AND
BLOCKS 6, 7 & 8.
GLENVIEW.
MONTGOMERY COUNTY, MARYLAND
SCALE: 1" = 100' JANUARY 1946

PLAT No 1699

JOSEPH N. STARKEY
Registered Engineer and
Land Surveyor
Silver Spring, Maryland.

| NO. | RADII | CURVE DATA | | | LONG CHORD | |
|-----|-------|------------|-------|---------------|--------------|--------|
| | | ARC | TAN | CENTRAL ANGLE | BEARING | LENGTH |
| 1 | 20.00 | 27.53 | 16.95 | 78°52'40" | N117°05'10"E | 25.41 |
| 2 | 20.00 | 35.30 | 24.32 | 101°07'20" | S68°54'50"E | 30.89 |
| 3 | 20.00 | 35.75 | 24.88 | 102°24'50" | N38°51'15"E | 31.18 |
| 4 | 20.00 | 27.08 | 16.08 | 77°35'10" | N117°02'40"W | 24.00 |
| 5 | 20.00 | 27.53 | 16.95 | 78°52'40" | N117°05'10"E | 25.41 |
| 6 | 20.00 | 35.30 | 24.32 | 101°07'20" | S68°54'50"E | 30.89 |
| 7 | 20.00 | 35.75 | 24.88 | 102°24'50" | N38°51'15"E | 31.18 |
| 8 | 20.00 | 27.08 | 16.08 | 77°35'10" | N117°02'40"W | 24.00 |
| 9 | 20.00 | 27.53 | 16.95 | 78°52'40" | N117°05'10"E | 25.41 |
| 10 | 20.00 | 35.30 | 24.32 | 101°07'20" | S68°54'50"E | 30.89 |
| 11 | 20.00 | 35.75 | 24.88 | 102°24'50" | N38°51'15"E | 31.18 |
| 12 | 20.00 | 27.08 | 16.08 | 77°35'10" | N117°02'40"W | 24.00 |
| 13 | 20.00 | 27.53 | 16.95 | 78°52'40" | N117°05'10"E | 25.41 |
| 14 | 20.00 | 35.30 | 24.32 | 101°07'20" | S68°54'50"E | 30.89 |
| 15 | 20.00 | 35.75 | 24.88 | 102°24'50" | N38°51'15"E | 31.18 |
| 16 | 20.00 | 27.08 | 16.08 | 77°35'10" | N117°02'40"W | 24.00 |
| 17 | 20.00 | 27.53 | 16.95 | 78°52'40" | N117°05'10"E | 25.41 |
| 18 | 20.00 | 35.30 | 24.32 | 101°07'20" | S68°54'50"E | 30.89 |
| 19 | 20.00 | 35.75 | 24.88 | 102°24'50" | N38°51'15"E | 31.18 |
| 20 | 20.00 | 27.08 | 16.08 | 77°35'10" | N117°02'40"W | 24.00 |
| 21 | 20.00 | 27.53 | 16.95 | 78°52'40" | N117°05'10"E | 25.41 |
| 22 | 20.00 | 35.30 | 24.32 | 101°07'20" | S68°54'50"E | 30.89 |
| 23 | 20.00 | 35.75 | 24.88 | 102°24'50" | N38°51'15"E | 31.18 |



ENGINEER'S CERTIFICATE

I hereby certify that the plan shown hereon is correct; That it is a subdivision of a part of the land conveyed by J. Eris Powell and National Metropolitan Bank of Washington, Trustees of the estate of Hugh Wallis to Sadie Milestone by deed dated March 17, 1945, and recorded among the Land Records of Montgomery County, Maryland April 6, 1945, in Liber _____ of Folio _____.

And that stones marked thus * and iron pipes marked thus o are in place where indicated.

Date: Jan 28, 1946

Joseph N. Starkey, Jr.
Joseph N. Starkey, Registered
Engineer and Land Surveyor.

OWNER'S DEDICATION

We, Sadie Milestone and Philip Milestone, her husband, owners of the property shown and described hereon hereby adopt this plan of subdivision as shown hereon establish the minimum building restriction lines, and dedicate the streets to public use.

There are no suits of action, leases, liens or trusts on the property included in this plan of subdivision.

Witnessed:

Jack W. Golden
Jack W. Golden

Date: Jan 28, 1946

Sadie Milestone
Sadie Milestone
Philip Milestone
Philip Milestone

WASHINGTON SUBURBAN SANITARY COMMISSION
Approved: MARCH 1, 1946
SUITABLE FOR WATER AND SEWER DESIGN
WITHOUT COMMITMENT AS TO INSTALLATION.
Harry H. Wall
CHIEF ENGINEER

MARYLAND - NATIONAL CAPITAL PARK & PLANNING COMMISSION
Approved: JAN 29, 1946
Joseph N. Starkey, Jr.
DIRECTOR OF PLANNING
Wm. H. Carlson
CHIEF ENGINEER
Luigi L. Dombroff
ACTING SECRETARY
M-N-C-P & P RECORD FILE NO. 13-1555

267025