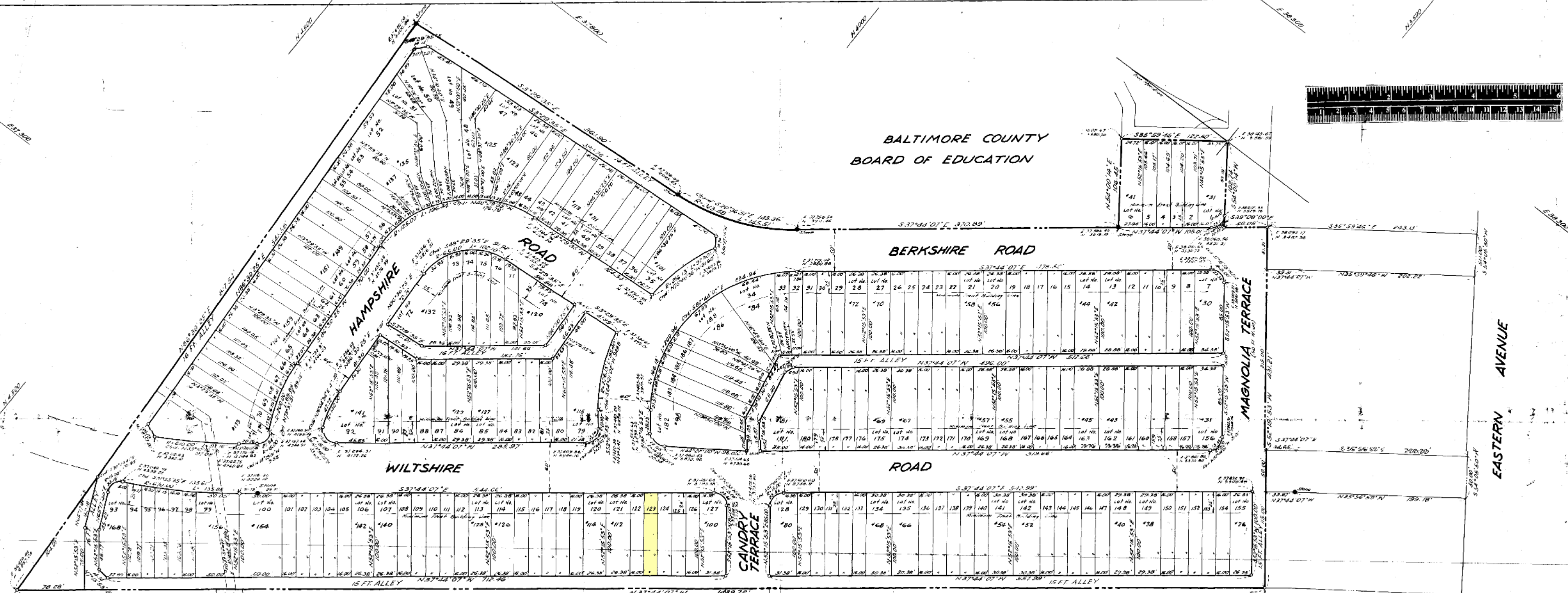


BALTIMORE COUNTY  
BOARD OF EDUCATION



PLAT NO. 2  
"EASTERN TERRACE"

PLAT OF PART OF  
**WILTSHIRE**  
15<sup>TH</sup> DISTRICT  
BALTIMORE COUNTY, MD

BERKSHIRE LAND COMPANY  
1110 FIDELITY BUILDING  
BALTIMORE 1, MARYLAND

APPROVED  
*[Signature]*  
DATE \_\_\_\_\_ COUNTY ROADS ENGINEER

APPROVED  
DATE \_\_\_\_\_  
CHAIRMAN OR SECRETARY OF THE PLANNING COMMISSION

OWNER'S CERTIFICATE  
I hereby certify that the above described plat is a true and correct copy of the original as filed in the office of the County Clerk of Baltimore County, Maryland, on this \_\_\_\_\_ day of \_\_\_\_\_, 1950.

BERKSHIRE LAND COMPANY

OWNER'S CERTIFICATE  
I hereby certify that the above described plat is a true and correct copy of the original as filed in the office of the County Clerk of Baltimore County, Maryland, on this \_\_\_\_\_ day of \_\_\_\_\_, 1950.

*[Signature]*

ALBERT E. POINER  
1-50  
MAR 3, 1950

The streets and/or roads as shown hereon and the mention thereof in deeds are for the purpose of description only and the same are not intended to be dedicated to public use; the fee simple to the beds thereof is expressly reserved in the Grants of the deed to which this plat is attached, their heirs and assigns.

Coordinates and bearings shown on this plat are referred to the system of coordinates established in the Baltimore County Metropolitan District.

BALTIMORE COUNTY CIRCUIT COURT (Plats) Plat Book TB5 15, p. 16, MSA, C2136, 74, Data available 1950/03/28. Printed 07/24/2017.