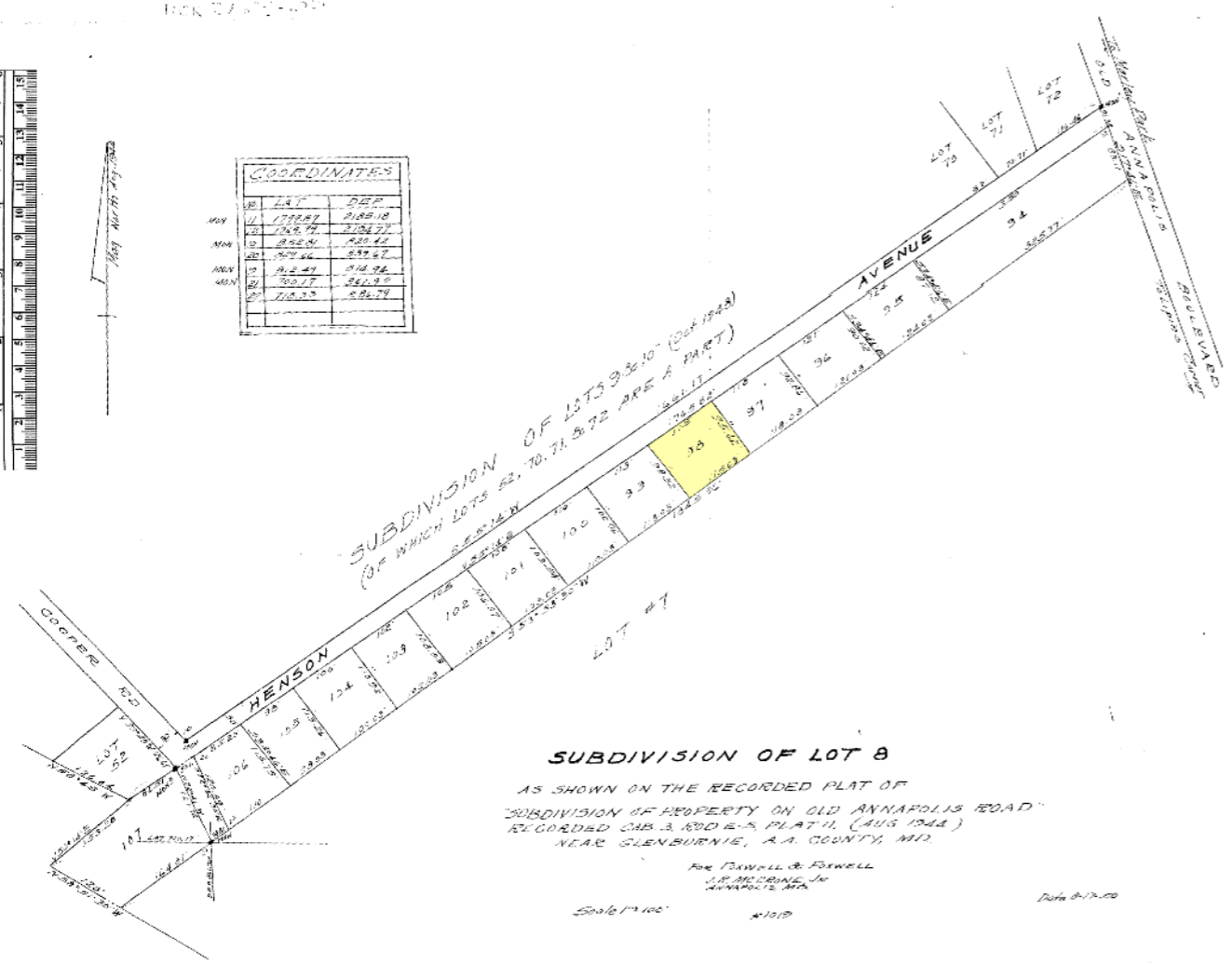




COORDINATES	
NO.	COORDINATES
1	172247 218518
2	172247 218577
3	172247 218636
4	172247 218695
5	172247 218754
6	172247 218813
7	172247 218872
8	172247 218931
9	172247 218990
10	172247 219049
11	172247 219108
12	172247 219167
13	172247 219226
14	172247 219285
15	172247 219344
16	172247 219403
17	172247 219462
18	172247 219521
19	172247 219580
20	172247 219639
21	172247 219698
22	172247 219757
23	172247 219816
24	172247 219875
25	172247 219934
26	172247 219993
27	172247 220052
28	172247 220111
29	172247 220170
30	172247 220229
31	172247 220288
32	172247 220347
33	172247 220406
34	172247 220465
35	172247 220524
36	172247 220583
37	172247 220642
38	172247 220701
39	172247 220760
40	172247 220819
41	172247 220878
42	172247 220937
43	172247 220996
44	172247 221055
45	172247 221114
46	172247 221173
47	172247 221232
48	172247 221291
49	172247 221350
50	172247 221409
51	172247 221468
52	172247 221527
53	172247 221586
54	172247 221645
55	172247 221704
56	172247 221763
57	172247 221822
58	172247 221881
59	172247 221940
60	172247 221999
61	172247 222058
62	172247 222117
63	172247 222176
64	172247 222235
65	172247 222294
66	172247 222353
67	172247 222412
68	172247 222471
69	172247 222530
70	172247 222589
71	172247 222648
72	172247 222707
73	172247 222766
74	172247 222825
75	172247 222884
76	172247 222943
77	172247 223002
78	172247 223061
79	172247 223120
80	172247 223179
81	172247 223238
82	172247 223297
83	172247 223356
84	172247 223415
85	172247 223474
86	172247 223533
87	172247 223592
88	172247 223651
89	172247 223710
90	172247 223769
91	172247 223828
92	172247 223887
93	172247 223946
94	172247 224005
95	172247 224064
96	172247 224123
97	172247 224182
98	172247 224241
99	172247 224300
100	172247 224359
101	172247 224418
102	172247 224477
103	172247 224536
104	172247 224595
105	172247 224654
106	172247 224713
107	172247 224772
108	172247 224831
109	172247 224890
110	172247 224949
111	172247 225008
112	172247 225067
113	172247 225126
114	172247 225185
115	172247 225244
116	172247 225303
117	172247 225362
118	172247 225421
119	172247 225480
120	172247 225539
121	172247 225598
122	172247 225657
123	172247 225716
124	172247 225775
125	172247 225834
126	172247 225893
127	172247 225952
128	172247 226011
129	172247 226070
130	172247 226129
131	172247 226188
132	172247 226247
133	172247 226306
134	172247 226365
135	172247 226424
136	172247 226483
137	172247 226542
138	172247 226601
139	172247 226660
140	172247 226719
141	172247 226778
142	172247 226837
143	172247 226896
144	172247 226955
145	172247 227014
146	172247 227073
147	172247 227132
148	172247 227191
149	172247 227250
150	172247 227309
151	172247 227368
152	172247 227427
153	172247 227486
154	172247 227545
155	172247 227604
156	172247 227663
157	172247 227722
158	172247 227781
159	172247 227840
160	172247 227899
161	172247 227958
162	172247 228017
163	172247 228076
164	172247 228135
165	172247 228194
166	172247 228253
167	172247 228312
168	172247 228371
169	172247 228430
170	172247 228489
171	172247 228548
172	172247 228607
173	172247 228666
174	172247 228725
175	172247 228784
176	172247 228843
177	172247 228902
178	172247 228961
179	172247 229020
180	172247 229079
181	172247 229138
182	172247 229197
183	172247 229256
184	172247 229315
185	172247 229374
186	172247 229433
187	172247 229492
188	172247 229551
189	172247 229610
190	172247 229669
191	172247 229728
192	172247 229787
193	172247 229846
194	172247 229905
195	172247 229964
196	172247 230023
197	172247 230082
198	172247 230141
199	172247 230200
200	172247 230259



**SUBDIVISION OF LOT 8**  
 AS SHOWN ON THE RECORDED PLAT OF  
 "SUBDIVISION OF PROPERTY ON OLD ANNAPOLIS ROAD"  
 RECORDED GAB 3, 100 E-3 PLAT 11, (AUG 1944)  
 NEAR GLENBURNIE, A.A. COUNTY, MD.

For TRAVELL & REWELL  
 J.R. MCCORMACK JR.  
 ANNAPOLIS, MD.

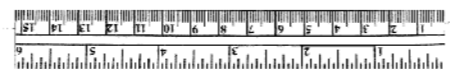
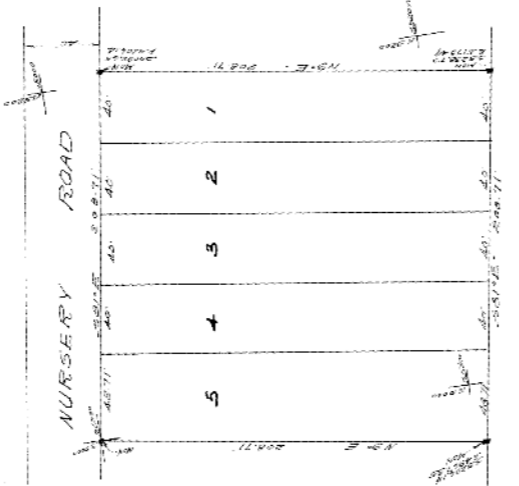
Scale 1"=100' 4/10/58 Date 8/17/50

The requirements of Sections 72A, 72B, 72C, 72D of Article 17 of The Annotated Code of Maryland, 1958 Edition, (With Clauses of Court, Subtitle (Clauses of Circuit Courts)) and as far as they relate to the making of this plat and setting of the markers have been complied with.

Travell & Rewell  
 J.R. McCormack Jr.  
 Surveyors & Plotters

THE REQUIREMENTS OF THE ANNE ARUNDEL COUNTY HEALTH DEPARTMENT HAVE BEEN MET IN PREPARING THIS PLAT.

William French  
 HEALTH OFFICER



The requirements of Sections 72A, 72B, 72C, 72D of Article 17 of The Annotated Code of Maryland, 1958 Edition, (With Clauses of Court, Subtitle (Clauses of Circuit Courts)) and as far as they relate to the making of this plat and setting of the markers have been complied with.

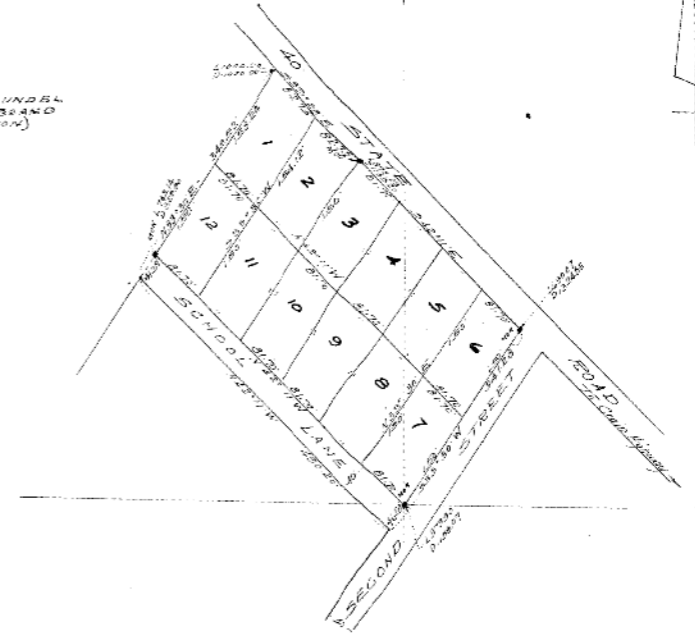
Travell & Rewell  
 J.R. McCormack Jr.  
 Surveyors & Plotters

**RESUBDIVISION OF  
 A PORTION OF  
 RAYNOR HEIGHTS**

-5TH DIST. ANNE ARUNDEL CO., MD.  
 SCALE 1"=40' 4/10/58 Date 8/17/50  
 REASON G. SANDERS  
 RESUBDIVISION LAND SURVEYOR  
 LINTONVILLE HEIGHTS, MD.

Approved  
 Health Officer  
 8/1/58

ANNE ARUNDEL  
 SCHOOL BOARD  
 (DRENTON)



The requirements of Sections 72A, 72B, 72C, 72D of Article 17 of The Annotated Code of Maryland, 1958 Edition, (With Clauses of Court, Subtitle (Clauses of Circuit Courts)) and as far as they relate to the making of this plat and setting of the markers have been complied with.

Reason G. Sanders  
 Surveyor & Ploter

The requirements of The Anne Arundel County Health Department have been met in preparing this plat.

William French  
 Health Officer

**"ARUNDEL VIEW"**  
 NEAR GAMBRILLS  
 4TH ELECTION DISTRICT  
 ANNE ARUNDEL COUNTY  
 MARYLAND

J.R. MCCORMACK JR.  
 ANNAPOLIS, MD. Date 8/17/50  
 Scale 1"=100' 4/10/58

