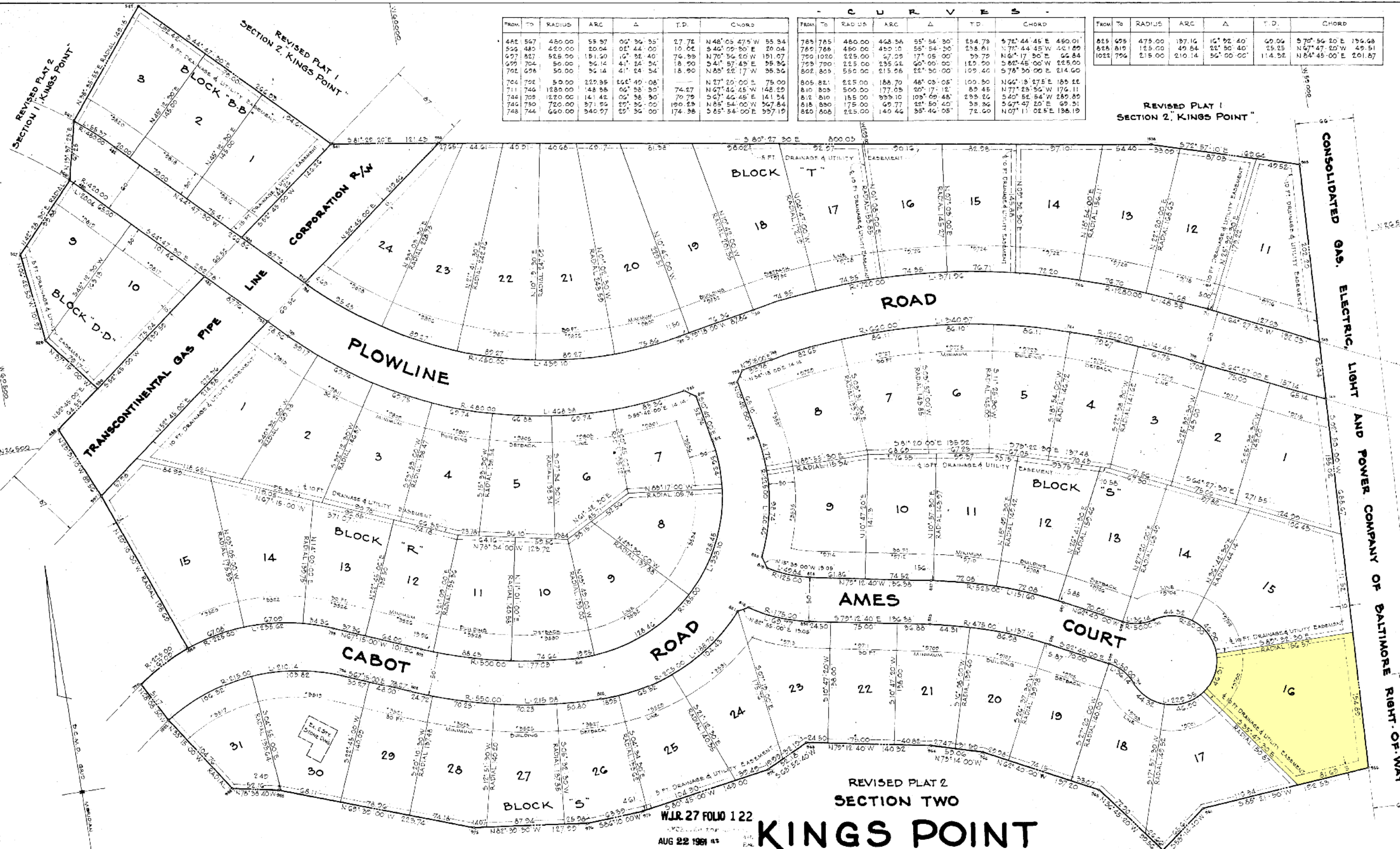


FROM	TO	RADIUS	ARC	Δ	T.D.	CHORD
442	567	450.00	55.97	00° 36' 35"	27.72	N48° 05' 47.5" W 55.84
524	480	450.00	20.04	01° 44' 00"	10.02	S40° 09' 30" E 20.04
697	827	525.00	151.50	10° 32' 40"	76.99	N70° 56' 20" W 151.07
699	704	50.00	36.14	41° 24' 34"	18.90	S41° 57' 49" E 36.36
702	698	50.00	36.14	41° 24' 34"	18.90	N89° 22' 17" W 36.36
704	702	50.00	36.14	41° 24' 34"	18.90	N27° 20' 00" E 75.00
711	746	1280.00	148.98	06° 58' 30"	74.27	N67° 46' 45" W 148.29
744	708	120.00	141.42	06° 58' 30"	70.79	S67° 46' 45" E 141.54
746	750	720.00	371.84	29° 35' 00"	190.23	N85° 54' 00" W 367.84
748	744	660.00	340.97	39° 35' 00"	174.98	S65° 54' 00" E 337.19

FROM	TO	RADIUS	ARC	Δ	T.D.	CHORD
789	785	480.00	468.36	55° 54' 30"	154.79	S72° 44' 45" E 450.01
789	788	480.00	468.36	55° 54' 30"	154.81	N77° 44' 45" W 421.29
790	1020	225.00	57.29	17° 05' 00"	39.79	N68° 17' 30" E 66.84
799	790	225.00	235.52	60° 00' 00"	125.50	S82° 45' 00" W 225.00
802	805	550.00	215.08	22° 30' 00"	109.40	S78° 30' 00" E 214.60
805	821	225.00	188.70	48° 03' 05"	100.30	N66° 19' 27.5" E 185.12
810	821	500.00	177.09	20° 17' 12"	89.45	N77° 28' 30" W 174.11
812	810	155.00	99.50	109° 09' 48"	299.82	S40° 52' 54" W 289.89
818	830	175.00	69.77	22° 50' 40"	38.96	S67° 47' 20" E 69.51
820	808	225.00	140.46	35° 46' 05"	72.60	N07° 11' 02.5" E 198.19

FROM	TO	RADIUS	ARC	Δ	T.D.	CHORD
825	495	475.00	197.16	15° 02' 40"	60.04	S70° 56' 20" E 194.68
828	819	125.00	49.84	21° 30' 40"	25.25	N67° 47' 20" W 49.51
1022	794	215.00	210.14	56° 00' 00"	114.32	N84° 45' 00" E 201.87

COORDINATES		
N	WEST	NORTH
480	60 373.16	26 780.57
482	60 390.58	26 822.84
488	60 207.71	26 699.07
489	60 255.88	26 642.44
488	60 446.59	26 517.42
527	60 459.00	26 720.78
529	60 448.14	26 610.51
530	60 395.22	26 554.49
541	60 391.28	26 787.61
542	60 378.71	26 976.40
566	60 387.61	26 794.45
567	60 371.77	26 859.81
695	59 385.40	26 094.09
697	59 262.44	26 140.50
698	59 300.26	26 108.36
699	59 323.22	26 063.94
702	59 265.14	26 104.28
704	59 299.58	26 097.65
709	59 178.09	26 288.12
711	59 149.16	26 242.25
740	59 099.24	26 320.96
744	59 205.67	26 444.57
746	59 286.44	26 498.93
748	59 642.00	26 445.68
790	59 633.94	26 524.69
785	60 733.93	26 575.89
788	60 744.17	26 446.41
789	60 148.57	26 039.40
789	60 739.67	26 808.32
800	60 400.58	26 216.68
802	60 108.68	26 150.77
803	60 884.30	26 205.88
805	60 893.34	26 16.98
808	60 571.27	26 383.75
810	60 712.49	26 147.44
812	60 722.70	26 386.62
816	60 712.78	26 192.46
819	60 655.09	26 284.09
820	60 588.55	26 246.69
821	60 728.67	26 100.89
825	60 514.59	26 140.72
827	60 508.23	26 109.64
828	60 299.20	26 215.97
830	60 648.56	26 125.25
905	60 020.03	26 587.28
923	60 961.03	26 540.22
924	60 895.19	26 519.54
925	60 864.84	26 511.72
926	60 853.94	26 501.67
927	60 962.68	26 532.30
928	60 979.17	26 526.93
930	60 145.88	26 636.70
932	60 194.05	26 600.16
933	60 271.18	26 765.63
936	60 054.07	26 892.46
941	60 246.97	26 889.80
943	60 274.30	26 930.68
944	60 590.55	26 004.43
945	60 358.12	26 224.30
946	60 480.00	26 287.30
947	60 228.55	26 844.62
948	60 721.24	26 007.72
949	60 058.49	26 975.88
949	60 868.30	26 983.77
949	60 091.55	26 979.53
988	60 319.40	26 089.59
989	60 268.27	26 073.68
997	60 410.55	26 435.30
1020	60 342.55	26 248.70
1021	60 050.09	26 985.93
1022	60 376.84	26 171.56
1508	60 182.22	26 697.01



W.J.R. 27 FOLIO 122

AUG 22 1961 as same day recorded in libary W.J.R. No. ... folio ... One of the ... Records of Baltimore County and examined, per

KINGS POINT

2ND ELECT. DISTRICT BALTO. COUNTY, MD. SCALE: 1" = 50' JUNE 27, 1961

DEVELOPER: MORRIS SOSNOW 2129 N. CHARLES ST. BALTIMORE 18, MD.

MATZ, CHILDS & ASSOCIATES 2129 N. CHARLES ST. BALTIMORE 18, MD.

APPROVED BALTIMORE COUNTY PLANNING BOARD DATE: 8/14/61 DIRECTOR

APPROVED DATE: 8/15/61 ALBERT S. KATTENBUCH COUNTY ROADS ENGINEER

NOTE: Streets and/or roads shown hereon and mention therein in deeds are for the purpose of description only and the same are not intended to be dedicated to public use, the fee simple title to the lands hereof is expressly reserved in the grantors of the deed to which this plat is attached, their heirs and assigns.

NOTE: Coordinates and bearings shown on this plat are referred to the system of coordinates established in the Baltimore County Metropolitan District, and are based on the following traverse stations: X-4217 W 59 700.62 N 28 693.43 X-4218 W 60 189.62 N 28 717.91

OWNERS CERTIFICATE: The requirements of Section 72-D Article 17 of the Annotated Code of Maryland, (Folk 1947 Supplement) as far as they relate to the preparation of this plat have been complied with. MORRIS SOSNOW OWNER

SURVEYORS CERTIFICATE: I JOHN C. CHILDS, a Registered Land Surveyor of the State of Maryland, do hereby certify that the land shown hereon has been laid out, and the plat thereof prepared in accordance with the provisions of the law relating to the subdivision of land known as House Bill 450 Chapter 102 of the Acts of 1945, and subsequent amendatory acts. REGISTERED LAND SURVEYOR '5622



BALTIMORE COUNTY CIRCUIT COURT (Subdivision Plats, BA) Plat Book WJR 27, p. 122, MSA 51236-4030. Date available 1961/08/22. Printed 04/10/2024.