

OWNER'S DEDICATION

We, The Bready-Fisher Corporation, a Maryland Corporation... hereby adopt this plan of subdivision...

THE BREADY-FISHER CORPORATION

By: Frank B. Bready, President Date: 12-29-58
Attest: Mildred H. Warthen, Secy-Treas Date: 12-29-58

ENGINEER'S CERTIFICATE

I hereby certify that the plan shown hereon is correct... a subdivision of the land conveyed by Catherine S. Scanlan and Thomas M. Scanlan...

Carl H. Uhrig Registered Land Surveyor No. 2265 Date: 12/29/58

Any lot transferred will have a minimum width and area substantially as shown hereon...

The requirements of Section 12-A, B, and D of the Annotated Code of Maryland 1959 Edition...

The Bready-Fisher Corporation, President Date: 12/29/58

Carl H. Uhrig Registered Land Surveyor No. 2265 Date: 12/29/58

NOTICE TO TITLE EXAMINERS

- (1) This plat has been approved subject to an agreement dated with the Board of County Commissioners of Anne Arundel County.
(2) No sale or contract of sale of said lots shown hereon to be made until the necessary improvements have been satisfactorily completed...

ANNE ARUNDEL COUNTY PLANNING AND ZONING COMMISSION APPROVED: Francis W. Roessler, Chairman Date: 3-19-59

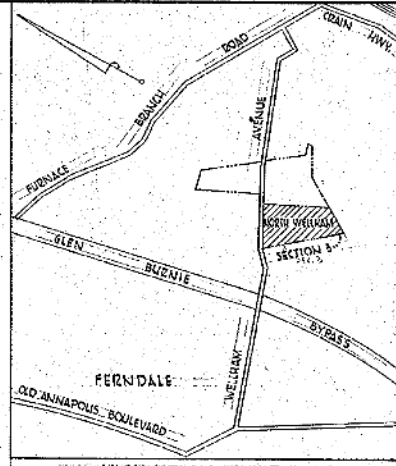
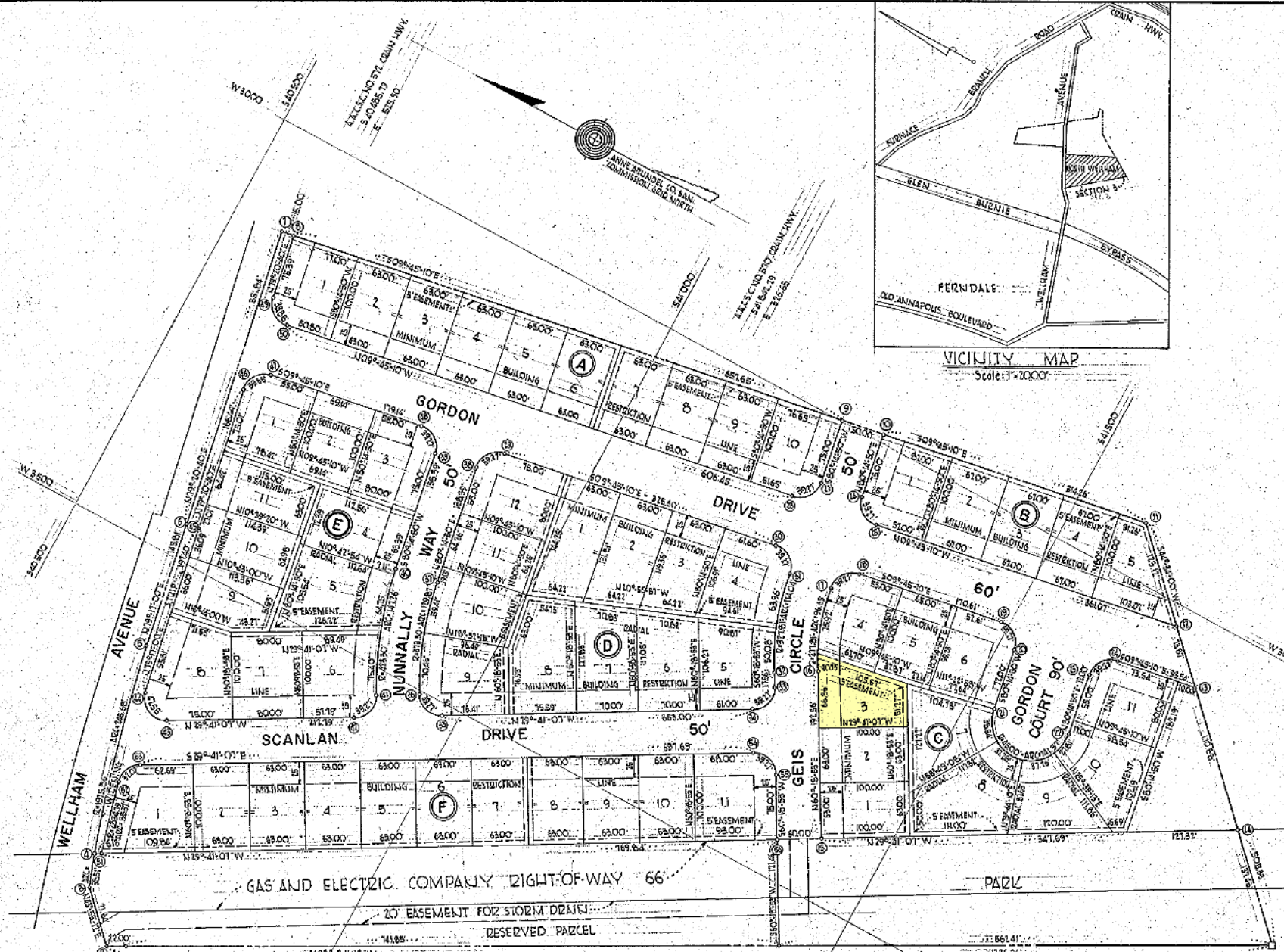
ANNE ARUNDEL COUNTY HEALTH DEPARTMENT APPROVED: J. Howard Beard, County Health Officer Date: 3-20-59

The rear five feet of each lot is reserved as an easement for utilities. Coordinates shown hereon are based on the Anne Arundel County Sanitary Commission coordinate system...

SECTION 3 NORTH WELLHAM

FIFTH ELECTION DISTRICT ANNE ARUNDEL COUNTY, MD. SCALE: 1" = 100' DECEMBER 18, 1958

JOHN E. HARMS, JR. AND ASSOCIATES CONSULTING ENGINEERS AND LAND SURVEYORS 8 Croin Highway, N.W. Glen Burnie, Md.

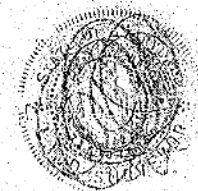


CURVE DATA

Table with columns: CURVE, RADIUS, Δ, TANGENT, LENGTH, BEARING, CHORD. Contains 20 rows of curve data.

COORDINATES

Table with columns: POINT, SOUTH, WEST. Contains 36 rows of coordinate data for points 1 through 36.



ANNE ARUNDEL COUNTY CIRCUIT COURT (Subdivision Plats, AA) Plat 1556; Plat Book 30, p. 81, MSA 51235-4469. Date available: 1959/03/21. Printed: 05/07/2024.