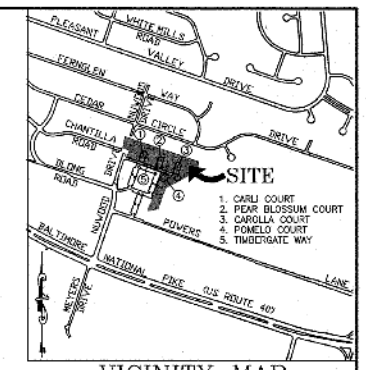
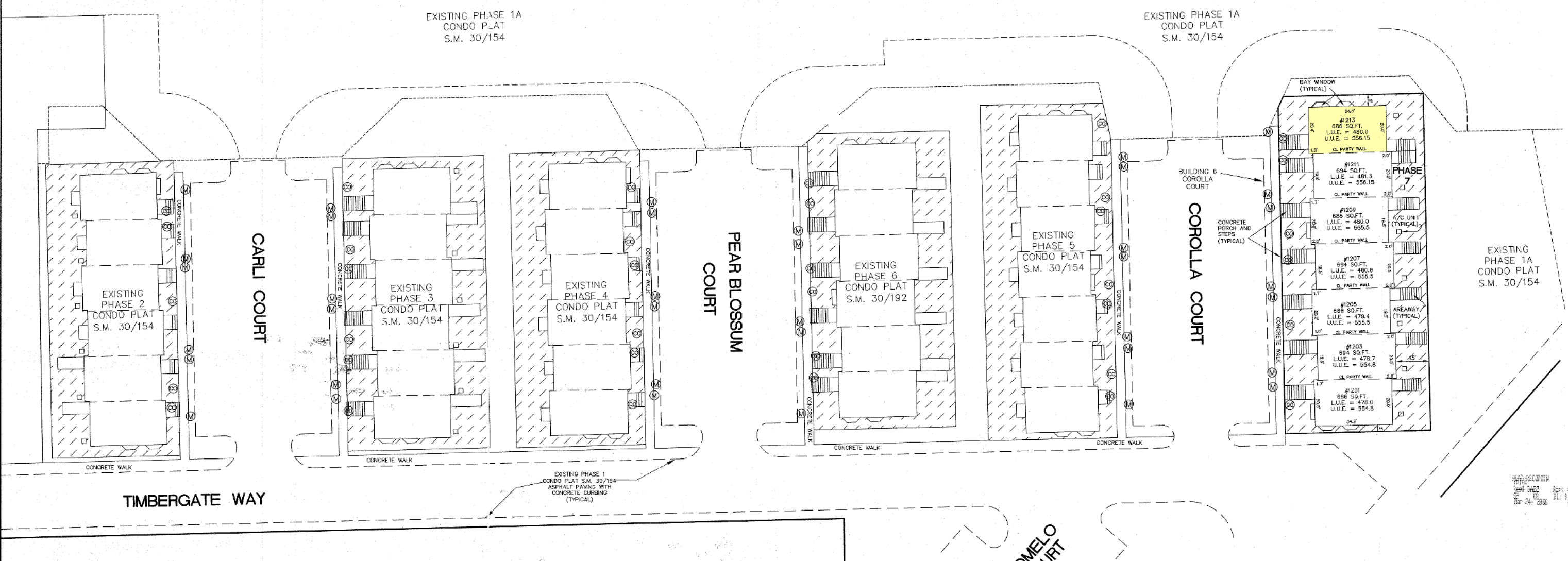


BALTIMORE COUNTY CIRCUIT COURT (Condominium Plats, BA) Condominium Book SM 31, pp. 38-39, MSA_S1265_1664. Date available 2006/03/24. Printed 05/21/2024.



VICINITY MAP
SCALE: 1"=1000'



PHASE AREA TABLE

PHASE 7	9652 SQ.FT. OR 0.222 AC.±
---------	---------------------------

- DENOTES LIMITED COMMON ELEMENT
- WATER METER
- CLEAN OUT

Filed for record
81 **ROMO** **039**
 Date
 Test: **MAR 24 2005**
Signature
 Clerk

SM
31-039

CONDOMINIUM PLAT
 PHASE 7
 CATONVILLE MEWS CONDOMINIUM
 (PREVIOUSLY RECORDED AS "SECTION TWO CATONVILLE GATEWAY"
 PLAT BOOK 77, FOLIO 1)
 FIRST ELECTION - FIRST COUNCILMANIC DISTRICT
 BALTIMORE COUNTY, MARYLAND
 SCALE: 1" = 20' MARCH 7, 2005
 SHEET 2 OF 2

LITTLE & ASSOCIATES, INC.
 ENGINEERS~LAND PLANNERS~SURVEYORS
 1055 TAYLOR AVENUE, SUITE 307
 TOWSON, MARYLAND 21286
 PHONE: (410)296-1636 FAX: (410)296-1639

COMPUTED: JGW DRAWN: JGW/PS CHECKED: **PS** PROJECT NUMBER: 01532

P121231 MSA SSM 1265 1664-2