

The flood map for the selected area is number **24003C0307F**, effective on **2/18/2015**

### DYNAMIC MAP



PRINT MAP/  
FIRMette

### MAP IMAGE



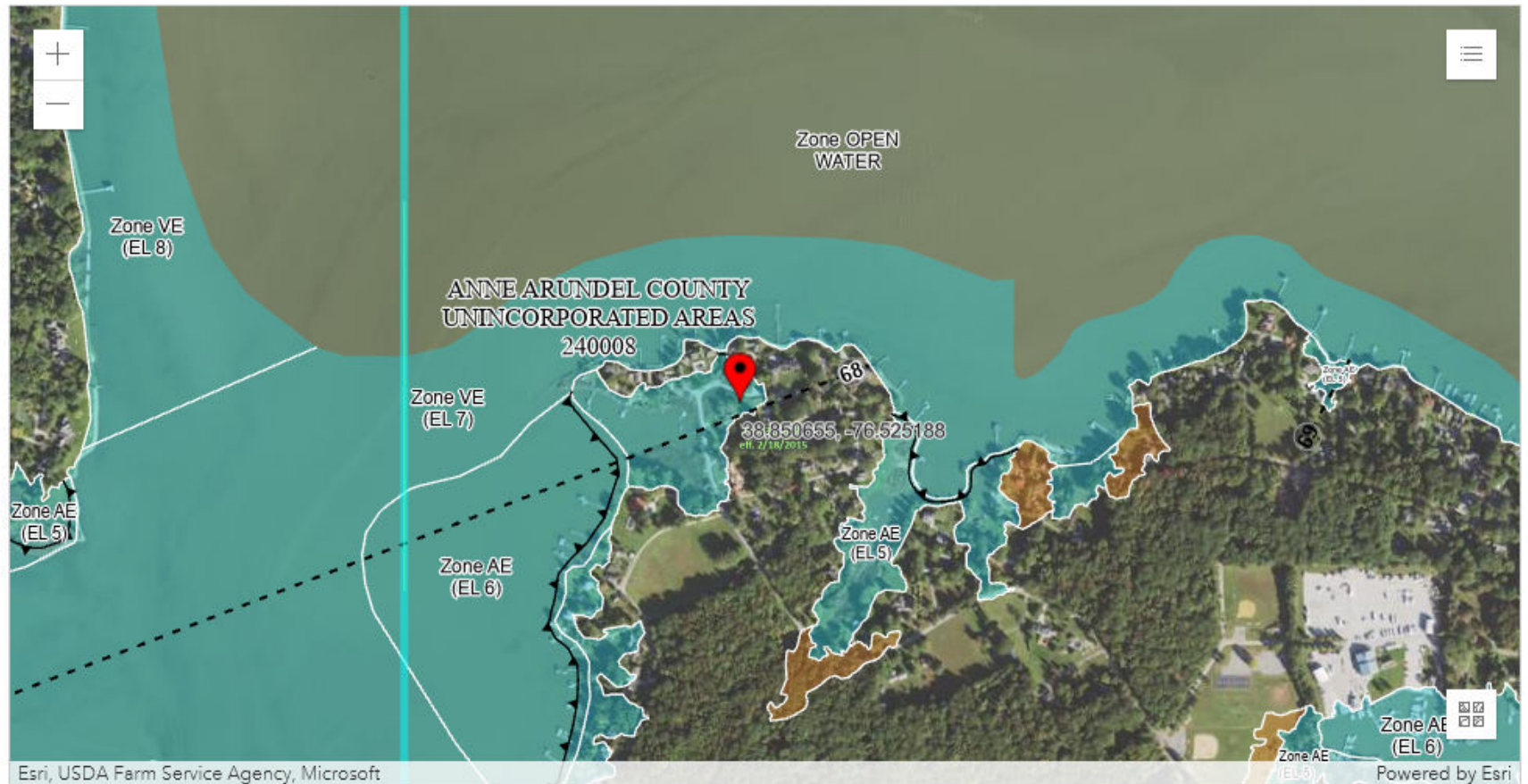
DOWNLOAD  
FIRM PANEL

### Changes to this FIRM [?](#)

- Revisions (3)
- Amendments (1)
- Revalidations (1)

You can choose a new flood map or move the location pin by selecting a different location on the locator map below or by entering a new location in the search field above. It may take a minute or more during peak hours to generate a dynamic FIRMette.

[Go To NFHL Viewer >](#)



Esri, USDA Farm Service Agency, Microsoft

Powered by Esri

