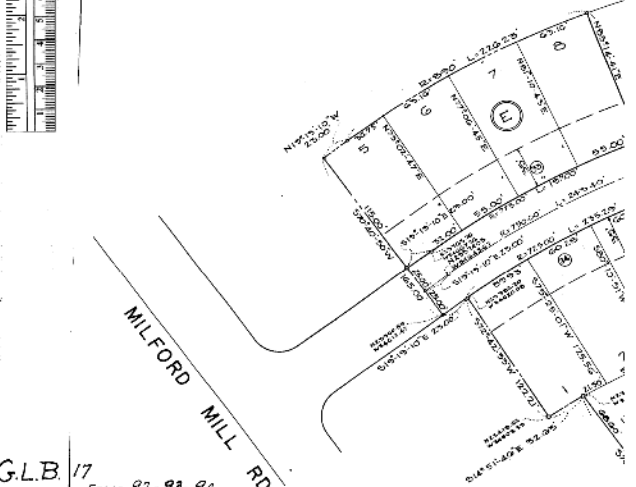


STREET	No.	RADIUS	ARC LENGTH	CENTRAL ANGLE	DOUBLE CHORD	TANGENT
Leafydale Terrace	1	524.25	504.72	172°41'30"	511.64	102.70
"	2	874.25	170.64	6	874.25	170.64
"	3	118.00	150.59	102°00'00"	118.00	150.59
"	4	70.00	117.80	4	70.00	117.80
Silver Creek Road	5	1485.00	452.53	11°05'30"	1485.00	452.53
"	6	25.00	35.11	102°00'00"	25.00	35.11
"	7	15.00	20.37	4	15.00	20.37
"	8	15.00	20.37	4	15.00	20.37
"	9	15.00	20.37	4	15.00	20.37
"	10	15.00	20.37	4	15.00	20.37
"	11	1075.00	434.51	13°00'00"	1075.00	434.51
"	12	1075.00	434.51	13°00'00"	1075.00	434.51
"	13	1075.00	434.51	13°00'00"	1075.00	434.51
"	14	908.00	317.83	4	908.00	317.83
"	15	410.00	145.23	20°42'00"	410.00	145.23
"	16	260.00	358.27	4	260.00	358.27
"	17	240.00	456.16	11°05'30"	240.00	456.16
Cliffedge Road	18	1395.00	456.67	4	1395.00	456.67
"	19	25.00	35.11	102°00'00"	25.00	35.11
"	20	15.00	20.37	4	15.00	20.37
"	21	25.00	35.11	102°00'00"	25.00	35.11
"	22	25.00	35.11	102°00'00"	25.00	35.11
"	23	25.00	35.11	102°00'00"	25.00	35.11
"	24	1335.00	443.30	4	1335.00	443.30
"	25	1048.00	425.45	25°52'00"	1048.00	425.45
"	26	1098.00	445.72	4	1098.00	445.72
"	27	184.00	262.35	30°00'00"	184.00	262.35
"	28	116.00	170.78	4	116.00	170.78
"	29	430.00	152.11	102°00'00"	430.00	152.11
"	30	290.00	322.52	4	290.00	322.52
"	31	25.00	35.11	102°00'00"	25.00	35.11
"	32	15.00	20.37	4	15.00	20.37
Temple Hill Road	33	775.00	182.00	102°00'00"	775.00	182.00
"	34	725.00	175.35	4	725.00	175.35
"	35	25.00	35.11	102°00'00"	25.00	35.11
"	36	25.00	35.11	102°00'00"	25.00	35.11
"	37	212.00	411.85	11°05'30"	212.00	411.85
"	38	2075.00	207.19	4	2075.00	207.19
"	39	25.00	35.11	102°00'00"	25.00	35.11
"	40	25.00	35.11	102°00'00"	25.00	35.11
"	41	1185.00	289.29	13°00'00"	1185.00	289.29
"	42	1095.00	279.37	4	1095.00	279.37
"	43	1028.00	355.05	25°52'00"	1028.00	355.05
"	44	1078.00	339.37	4	1078.00	339.37
"	45	128.75	181.45	102°00'00"	128.75	181.45
"	46	31.25	44.34	4	31.25	44.34
"	47	25.00	35.11	102°00'00"	25.00	35.11
"	48	15.00	20.37	4	15.00	20.37
Honey Road	49	510.16	212.94	13°24'15"	510.16	212.94
"	50	850.16	201.34	4	850.16	201.34
"	51	875.00	184.95	102°00'00"	875.00	184.95
"	52	1028.00	175.02	4	1028.00	175.02



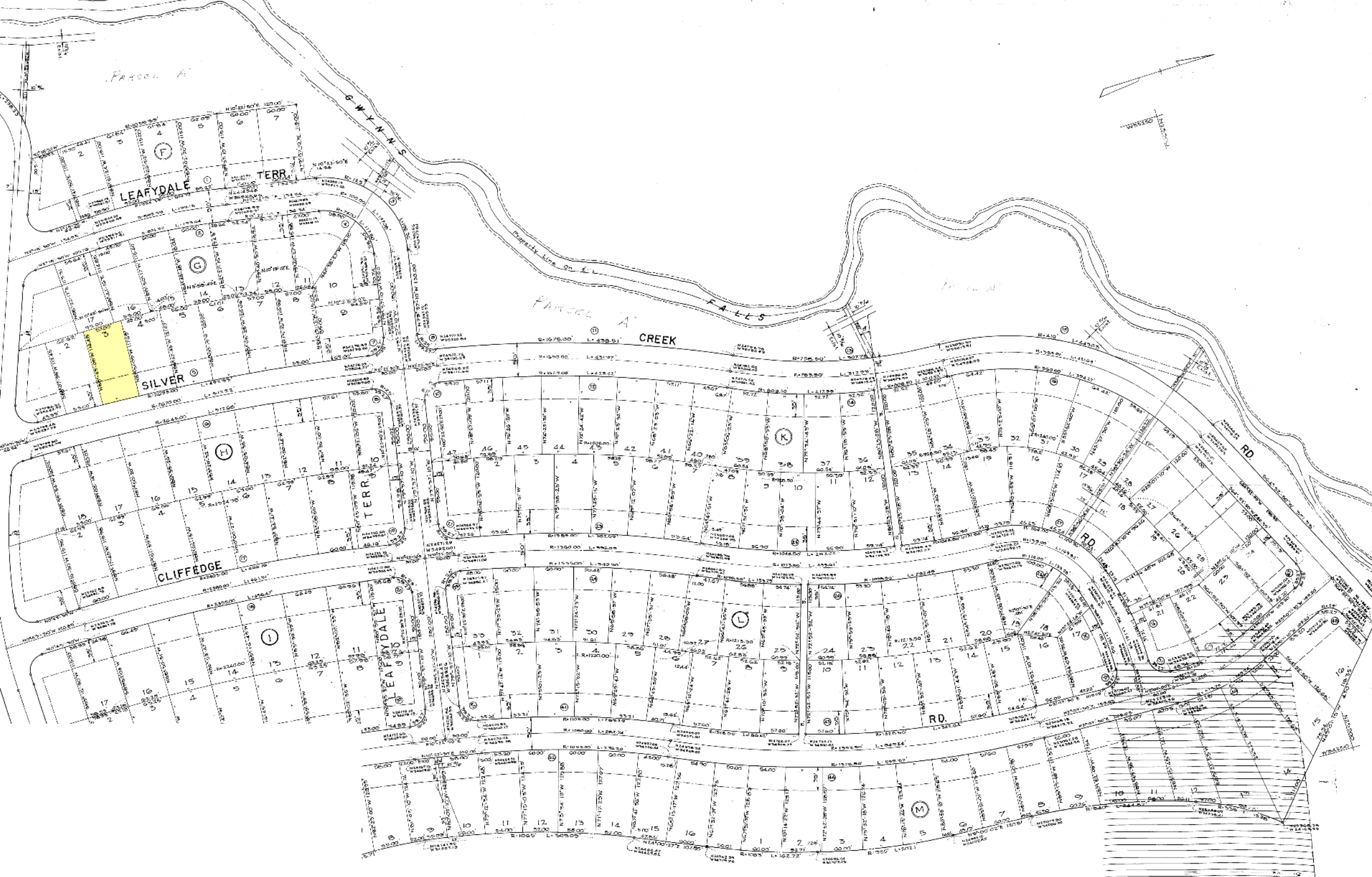
GLB 17
Folio 92-93-94

FILED FOR RECORD WITH
FROM

NOV 17 1951

REG. *George L. Kahl*
ENGR.

RUMMEL, KLEPPER, & KAHL
ENGINEERS



Note: House Setback Shown Thus
Curve Numbers

OWNERS CERTIFICATE
Certification is hereby made that all
the requirements of the Annotated Code
of Maryland, Chapter 101B, Act of 1948, have
been complied with on this plat.

THE MILBROOK CORPORATION

The Streets and Other Roads as Shown Hereon and Mentioned
in the Attached Deed are for the Purpose of Dedication Only
and the Same are Not Intended to be Dedicated to Public Use.
The Fee Simple Title to the Beds Thereof is Especially Reserved
in the Grantors of the Deed to Which this Plat is Attached
Their Heirs and Assigns.

Approved Baltimore County Planning Commission.
By *James L. Rice* Jan 13 1951
Date

Approved Baltimore County Highways Department.
By *Frank Jeffers* Jan 16 1951
Date

Coordinates Shown are Extensions Made
from Baltimore City Coordinates as Established
by the Baltimore City Topographical Commission.
Bearings Refer to True North at Baltimore

H.S. Klepper
H.S. KLEPPER
Registered Engineer
No. 616

SECTION II
PROPERTY PLAT
SILVER CREEK
ELECTION DISTRICT NO. 3
BALTO. COUNTY MD.
DATE: MAY, 1951 SCALE: 1"=50'