

No.	Radius	ARC	TAN	LONG CHORD	ANGULAR BEARING
1	672'	217°51'31"	249.90	126.17	S82°57'55"E
2	378.23'	107°58'45"	106.82	43.88	S86°56'28"E
3	25'	48°11'23"	21.03	11.18	S37°55'45"E
4	30'	27°22'44"	24.19	12	S72°00'00"E
5	25'	48°11'23"	21.03	11.18	S7°05'45"E
6	975'	20°40'00"	442.44	222.10	S88°00'00"E
7	1025'	18°55'50"	326.74	164.77	S84°05'55"E
8	1025'	37°55'50"	59.39	292.1	N80°37'55"E
9	1025'	27°10'00"	486.00	247.64	S87°05'00"E
10	975'	27°10'00"	462.22	235.58	S87°05'00"E
11	600'	5°03'45"	57.42	28.73	S76°21'51"E
12	700'	6°18'00"	75.00	37.34	S76°34'10"E
13	1530'	0°55'53"	6.18	3.09	N67°22'47"E

NOTES:
 "The streets and/or roads as shown herein and the mention thereof in deeds are for the purpose of description only, and the same are not intended to be dedicated to public use, the fee simple title thereof is expressly reserved in the grantors to the deed to which this plat is attached, their heirs and assigns."

Coordinates Shown On This Plat Are Based On Metropolitan District Of Baltimore County Coordinate System.
 The requirements of Sections 78A, 72B and of Article 17 of the Annotated Code of Md., 1939 Edition (Title: Clerks of Court, Subtitle: Clerks of Circuit Courts) as far as they relate to the making of this plat and setting the markers have been complied with.

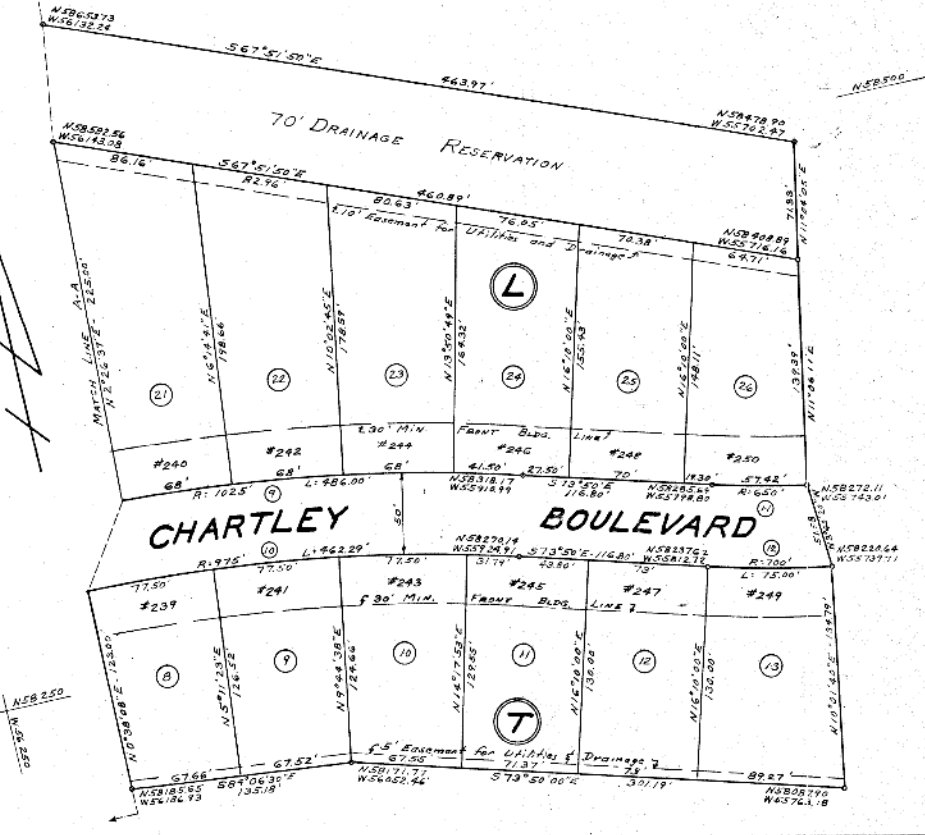
Alvin P. Primrose
 W. H. Primrose
 REGISTERED LAND SURVEYOR #1251

45802
 9-7-58

NOTE:
 Coordinates Based On Baltimore County Metropolitan District Traverse Stations.
 No. M-55 N 61822.86 W 53421.14
 No. M-56 N 62010.85 W 52719.12
 R.P.C.

RECEIVED for Record
 AUG 23 1958 at 11 A.M.
 same day recorded in Liber
 G. I. B. No. _____ folio
 One of the Records of
 Baltimore County and ex-
 expanded, per
Raymond L. O'Connell
 Clerk

SECTION TWO
 PLAT FOUR
CHARTLEY
 A DEVELOPMENT OF
CHARTLEY HOLDING CO., INCORPORATED
 711 ST. PAUL ST.
 BALTO. 2, MD.
 4TH ELECTION DISTRICT BALTIMORE CO., MD.
 SCALE 1"=50'
 MARCH 3, 1958



HIGHWAYS DEPARTMENT OF BALTIMORE COUNTY APPROVED FOR STREET ALIGNMENT AND LOCATION By <i>John A. ...</i> DATE 8/11/58	APPROVED FOR BALTIMORE COUNTY PLANNING BOARD By <i>Richard ...</i> DATE Aug. 8, 1958	APPROVED FOR BALTIMORE COUNTY HEALTH DEPARTMENT By <i>William H. ...</i> DATE 8-20-58	W. H. PRIMROSE & ASSOCIATES 21 W. PENNSYLVANIA AVE. TOWSON 4, MD.
---	---	--	---