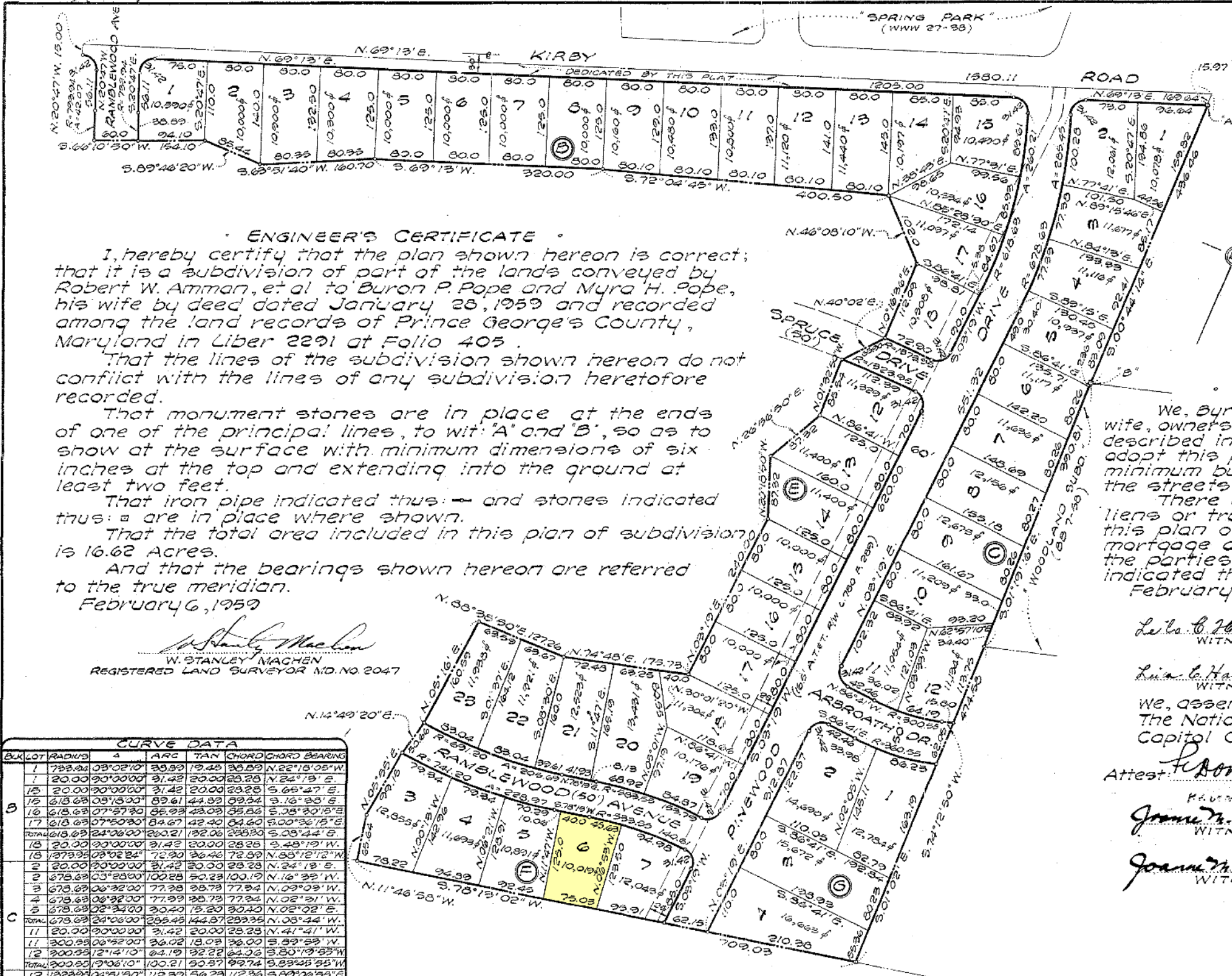


WASHINGTON SUBURBAN SANITARY COMMISSION
 APPROVED: 2-11-59
 DATE
 SUITABLE FOR WATER AND SEWER
 DESIGN WITHOUT COMMITMENT AS TO
 INSTALLATION.
 Harry B. Shaw
 CHIEF ENGINEER

HEALTH DEPARTMENT
 PRINCE GEORGE'S COUNTY, MARYLAND
 APPROVED: 2-9-59
 DATE
 H.D. Smith, C.S.
 CHIEF ENGINEER



OWNER'S DEDICATION

We, Byron P. Pope and Myra H. Pope, his wife, owners of the property shown hereon and described in the Engineer's Certificate hereby adopt this plan of subdivision, establish the minimum building restriction lines and dedicate the streets to public use.
 There are no suits of action, leases, liens or trusts on the property included in this plan of subdivision, except a certain mortgage and a certain deed of trust and the parties in interest thereto have below indicated their assent.
 February 9, 1959

Leta C. Hathaway
 WITNESS

Byron P. Pope
 BYRON P. POPE

Leta C. Hathaway
 WITNESS

Myra H. Pope
 MYRA H. POPE

We, assent to this plan of subdivision. The National Bank of Washington, Trustee for Capitol Cemetery of Prince George's County, Md.

Attest: *[Signature]*

John W. Middleton
 JOHN W. MIDDLETON, TRUSTEE

Joanna M. Suckett
 WITNESS

Robert L. Edwards
 ROBERT L. EDWARDS, TRUSTEE

Joanna M. Suckett
 WITNESS

Robert L. Edwards
 ROBERT L. EDWARDS, TRUSTEE

SECTION ONE

RAMBLEWOOD VILLAGE

PRINCE GEORGE'S COUNTY, MARYLAND

SCALE: 1" = 100'

FEBRUARY, 1959

W. STANLEY MACHEN
 REGISTERED LAND SURVEYOR
 HYATTSVILLE, MARYLAND

ENGINEER'S CERTIFICATE
 I, hereby certify that the plan shown hereon is correct; that it is a subdivision of part of the lands conveyed by Robert W. Amman, et al to Byron P. Pope and Myra H. Pope, his wife by deed dated January 28, 1959 and recorded among the land records of Prince George's County, Maryland in Liber 2291 at Folio 405.
 That the lines of the subdivision shown hereon do not conflict with the lines of any subdivision heretofore recorded.
 That monument stones are in place at the ends of one of the principal lines, to wit: "A" and "B", so as to show at the surface with minimum dimensions of six inches at the top and extending into the ground at least two feet.
 That iron pipe indicated thus: — and stones indicated thus: = are in place where shown.
 That the total area included in this plan of subdivision is 16.62 Acres.
 And that the bearings shown hereon are referred to the true meridian.
 February 6, 1959

[Signature]
 W. STANLEY MACHEN
 REGISTERED LAND SURVEYOR N.O. NO. 2047

BLK	LOT	RADIUS	ARC	TAN	CHORD	CHORD BEARING
B	1	793.21	03°02'10"	33.99	19.42	N.22°18'05"W
	1	20.00	90°00'00"	31.42	20.00	N.24°13'E
	15	20.00	90°00'00"	31.42	20.00	S.65°47'E
	16	615.68	09°13'00"	89.61	44.99	S.16°38'E
	16	615.68	07°57'30"	85.99	43.09	S.05°30'5"E
	17	615.68	07°50'30"	84.67	42.40	S.00°36'15"E
	TOTAL	615.68	24°06'00"	230.21	132.06	S.09°44'E
	18	20.00	90°00'00"	31.42	20.00	S.48°19'W
	18	1373.95	03°02'24"	72.90	36.46	N.85°12'12"W
	2	20.00	90°00'00"	31.42	20.00	N.24°13'E
C	2	675.69	03°25'00"	100.28	50.23	N.16°39'W
	3	675.69	06°32'00"	77.38	38.79	N.09°09'W
	4	675.69	06°32'00"	77.38	38.79	N.02°31'W
	5	675.69	02°34'00"	30.40	15.20	N.02°02'E
	TOTAL	675.69	24°06'00"	235.45	144.87	N.08°44'W
D	11	20.00	90°00'00"	31.42	20.00	N.41°41'W
	11	300.95	03°52'00"	36.02	18.09	S.89°59'W
	12	300.95	12°14'10"	64.19	32.22	S.80°19'55"W
TOTAL	300.95	19°06'10"	100.21	50.57	S.89°25'55"W	
E	12	1323.95	04°51'30"	112.37	56.23	S.89°08'55"E
	12	20.00	90°00'00"	31.42	20.00	S.41°41'E
	13	20.00	90°00'00"	31.42	20.00	S.48°19'W
	19	533.55	08°20'00"	64.87	32.57	S.89°09'W
	20	533.55	06°46'00"	65.92	34.30	S.91°36'W
TOTAL	533.55	15°06'00"	133.79	77.34	S.85°46'W	
F	21	691.20	09°17'00"	99.61	49.81	S.79°51'30"W
	22	691.20	06°59'00"	83.04	41.57	S.84°56'30"W
	23	691.20	06°59'00"	83.04	41.57	N.86°10'30"W
	TOTAL	691.20	7°03'00"	205.69	103.61	S.86°44'30"W
	3	741.20	06°08'00"	79.34	39.71	S.87°09'E
G	4	741.20	06°08'00"	79.34	39.71	N.86°43'E
	5	741.20	05°28'00"	70.29	35.17	N.80°56'E
	TOTAL	741.20	17°42'00"	229.97	115.41	N.87°04'00"E
	6	533.55	04°54'00"	45.63	22.89	N.80°40'E
	7	533.55	10°2'00"	94.98	47.62	N.88°13'E
TOTAL	533.55	15°06'00"	140.61	70.72	N.85°46'E	
OUTLINES	1	20.00	90°00'00"	31.42	20.00	S.41°41'E
	2	320.55	13°42'10"	36.29	18.32	N.81°09'55"E
TOTAL	320.55	03°24'00"	33.98	17.00	S.89°23'E	
TOTAL	320.55	19°06'10"	120.21	60.67	N.89°45'55"E	
2	20.00	90°00'00"	31.42	20.00	N.48°18'E	
TOTAL	793.94	03°02'10"	42.07	21.04	N.22°18'05"W	
OUTLINES	20.00	90°00'00"	31.42	20.00	N.65°47'W	

DEPARTMENT OF PUBLIC WORKS
 PRINCE GEORGE'S COUNTY, MARYLAND
 APPROVED Feb 9, 1959
 DATE
[Signature]
 ADMINISTRATOR

PRINCE GEORGE'S COUNTY CIRCUIT COURT (Subdivision Plats, PG) Plat MSA 55V 1250-16249 Date available: 1999. Print on 11/09/2025