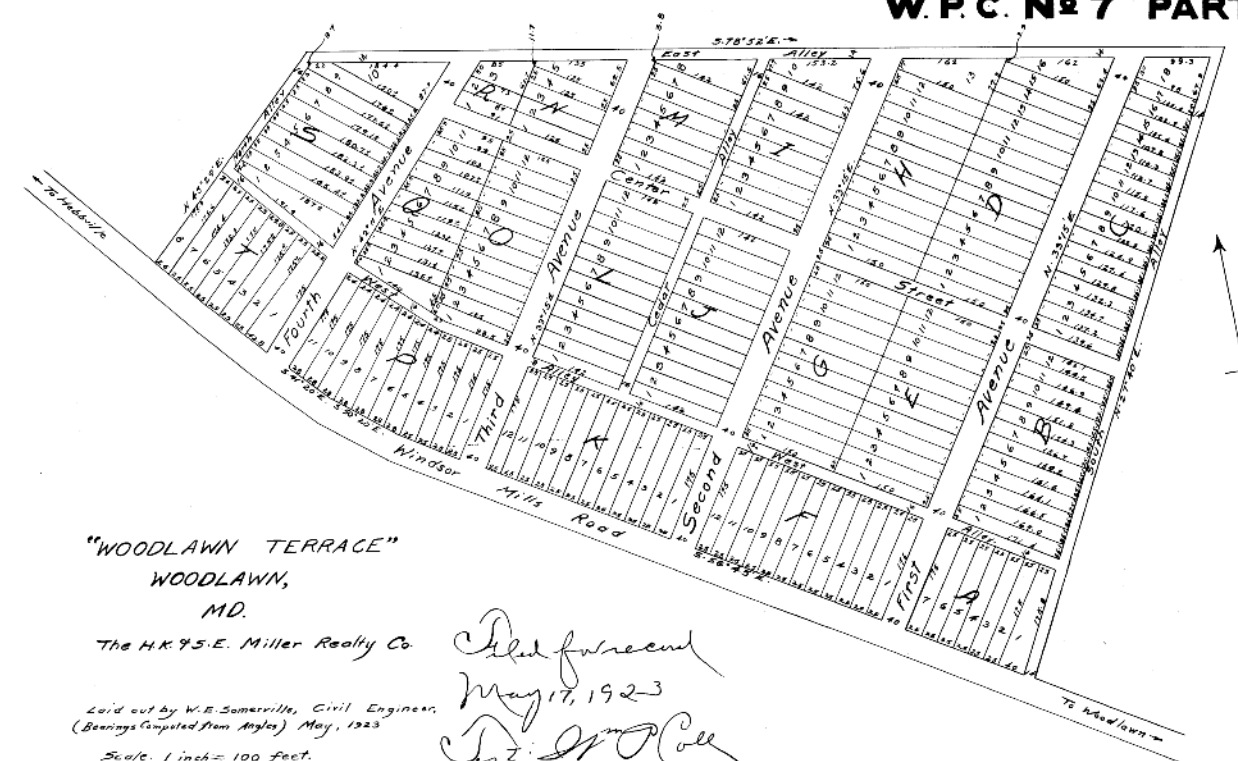


Note: The courses are referred to the True Meridian.

Scale: 20 Feet to one inch

J. J. Martens & Co.
 Surveyors & Civil Engs
 Balto. Nov. 6-1922

Best accompanying
 from John & Wilson Co
 to Henry Ashman Inc
 Best filed for record
 November 23rd 1922
 Test W.P.C. Cole Clerk

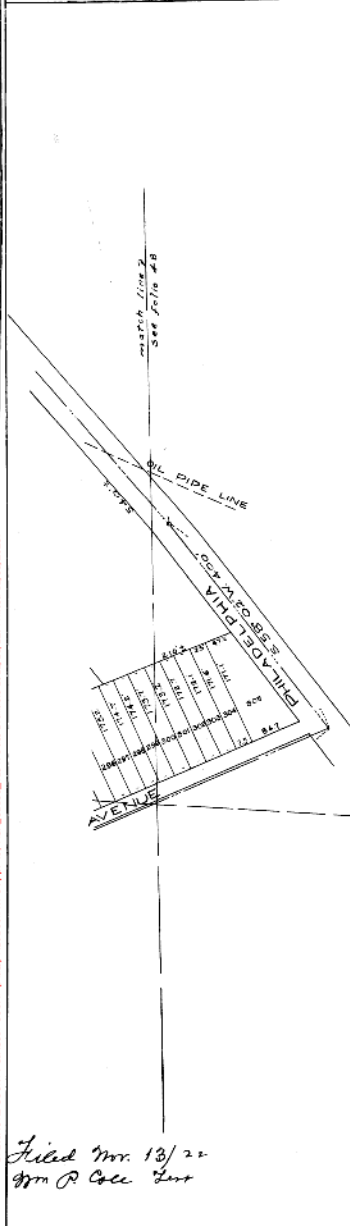


"WOODLAWN TERRACE"
 WOODLAWN,
 MD.

The H.K. F.S.E. Miller Realty Co

Laid out by W.E. Somerville, Civil Engineer,
 (Bearings Computed from Angles) May, 1923
 Scale: 1 inch = 100 feet.

Filed for record
 May 17, 1923
 Test W.P.C. Cole
 Clerk



AMENDED
 Flat of
 HAYWOOD HEIGHTS

Scale: 100 feet to one inch

J. J. Martens & Co.
 Surveyors & Civil Engs
 Balto. Nov. 12-1919

Filed for record
 Nov. 22, 1922
 Test W.P.C. Cole
 Clerk

Filed Nov. 13/22
 W.P.C. Cole Clerk

Water Boundary Line of Baltimore City as established in 1918