

The use of the Community water supply and/or of the Community sewerage system is a convenience with the Harford County Master Plan.

*John S. Sabo, M.S.A.*  
Health Officer

The signing of this subdivision plat in no way guarantees the availability of public services at the time of development.

This subdivision must comply with State Regulations for underground electric distribution and telephone service.

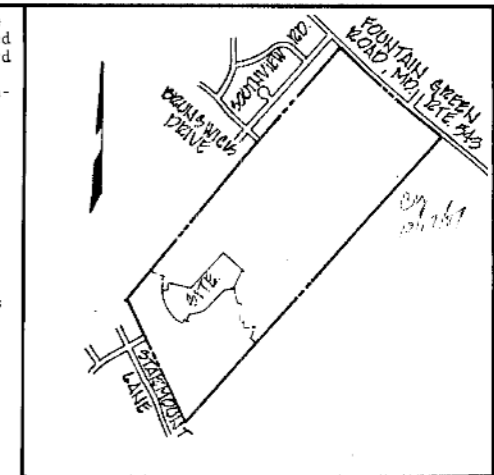
Driveway entrance construction and location to be approved by the Harford County Department of Public Works for Driveway entrances fronting on County Roads.

"The Lots shown on this Subdivision are subject to a Subdivision Agreement dated 12/1/1987 by and between Harford County, Maryland and the Owners of the land shown hereon which Agreement is intended to be recorded among the Land Records of Harford County, subsequent to the recording of this plat".

Common Open Space Will Be Maintained By Fountain Glen Homeowners Association, Inc., As Provided For In A Declaration of Covenants, Conditions And Restrictions, As Recorded In The Land Records In Liber C.G.H. 1298, Folio 398 And Amended Declaration of Covenants, Conditions, And Restrictions

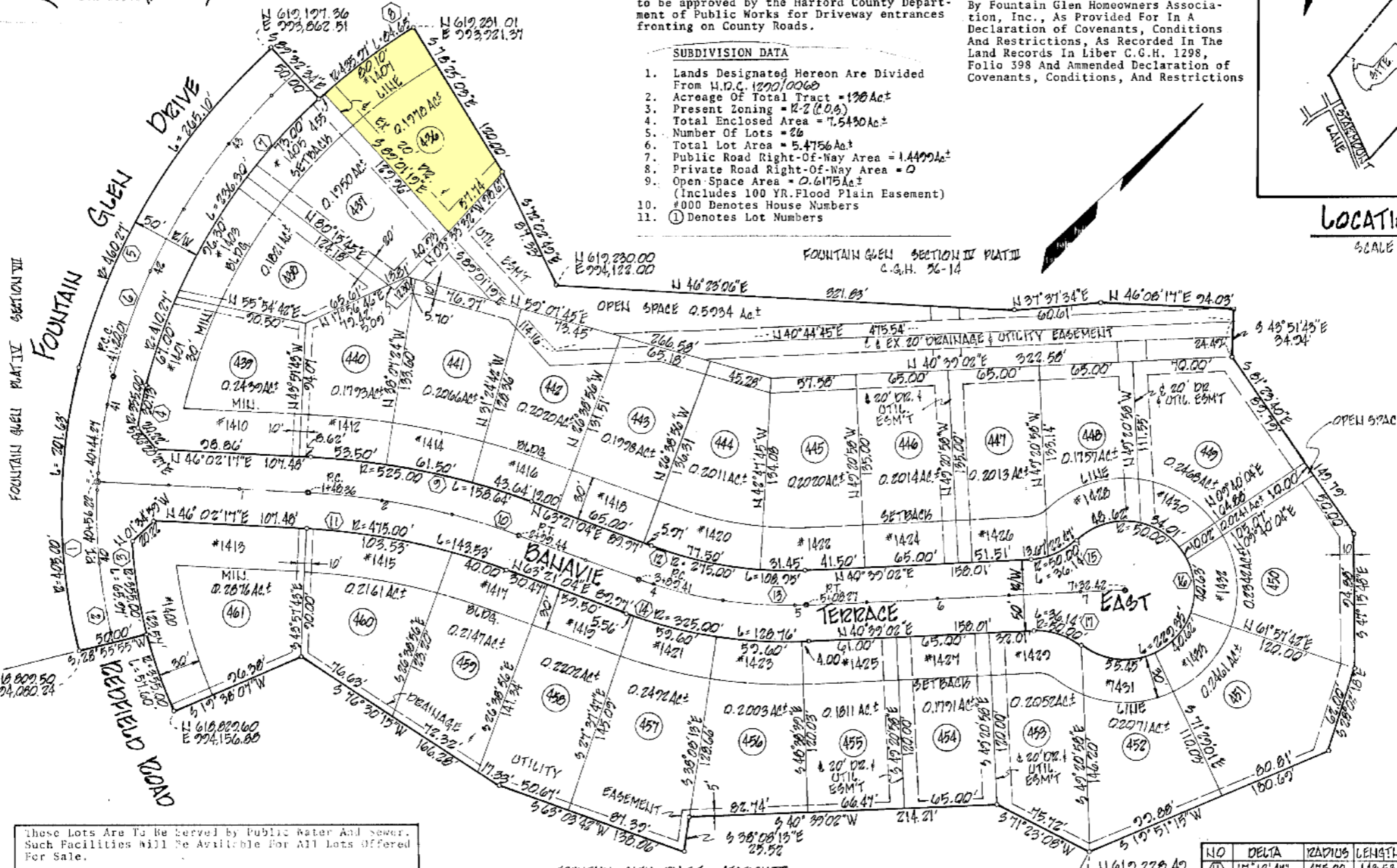
**SUBDIVISION DATA**

1. Lands Designated Hereon Are Divided From H.D.C. 1290/0068
2. Acreage Of Total Tract = 130.00 Ac±
3. Present Zoning = R-2 (C.O.S.)
4. Total Enclosed Area = 7.5430 Ac±
5. Number Of Lots = 26
6. Total Lot Area = 5.4756 Ac±
7. Public Road Right-Of-Way Area = 1.4400 Ac±
8. Private Road Right-Of-Way Area = 0
9. Open Space Area = 0.6175 Ac± (Includes 100 YR. Flood Plain Easement)
10. #000 Denotes House Numbers
11. ① Denotes Lot Numbers



**LOCATION MAP**

SCALE: 1"=1200'



These Lots Are To Be Served by Public Water And Sewer. Such Facilities Will Be Available For All Lots Offered For Sale.

The Construction Plans For The Community Water Supply and/or Community Sewerage Facilities To Served The Project Were Approved On NOV. 2, 1987 By The State Department Of Health And Mental Hygiene. Construction Permit Numbers Are: WATER: 87-12-1024 SEWER: 87-22-1028

NO.	DELTA	RADIUS	LENGTH	TANGENT	CHORD	NO.	DELTA	RADIUS	LENGTH	TANGENT	CHORD
①	28°31'31"	405.00	201.65	102.95	N 46°48'19.5"W 199.56'	⑥	33°00'00"	435.21	250.70	128.99	N 16°02'34"W 247.25'
②	28°31'31"	380.00	189.19	96.60	N 46°48'19.5"W 189.24'	⑦	33°00'00"	410.21	236.30	121.53	N 16°02'34"W 233.05'
③	10°38'49"	285.00	65.91	33.08	N 55°44'40.5"W 65.87'	⑧	11°04'31"	435.21	84.65	42.46	N 08°01'11.5"E 84.52'
④	04°51'36"	355.00	30.73	15.38	N 35°01'22"W 30.72'	⑨	17°18'41"	525.00	158.68	79.99	N 54°41'40.5"E 138.04'
⑤	33°00'00"	460.25	265.10	136.34	N 16°02'34"W 261.45'	⑩	17°18'41"	500.00	151.04	76.12	N 54°41'40.5"E 150.51'

APPROVAL: *John S. Sabo, M.S.A.* 1-22-88  
 APPROVAL: *William G. Conroy* 3-1-88  
 APPROVAL: *Richard G. Carter* 3-1-88  
 APPROVAL: *William G. Conroy* 3-1-88  
 APPROVAL: *William G. Conroy* 3-1-88

THE OWNER HEREBY GRANTS TO HARFORD COUNTY, MARYLAND, AN EASEMENT FOR THE CONSTRUCTION, MAINTENANCE, REPAIR AND REPLACEMENT OF WATER, SEWER AND STORM DRAINAGE LINES WITHIN THE DRAINAGE AND UTILITY EASEMENTS AND ROAD IMPROVEMENT RIGHTS OF WAY AS SHOWN ON THE PLAT.

UNLESS OTHERWISE PROVIDED ON THIS PLAT, THE STREETS, ROADS, OPEN SPACES AND PUBLIC SITES SHOWN HEREON, AND THE MENTION THEREOF IN DEEDS ARE FOR THE PURPOSE OF DESCRIPTION ONLY AND THE SAME ARE NOT INTENDED TO BE DEDICATED TO PUBLIC USE. THE FEE SIMPLE TITLE TO THE LAND SO SHOWN IS EXPRESSLY RESERVED TO THE PRESENT OWNER(S) SHOWN ON THIS PLAT, THEIR SUCCESSORS, HEIRS AND ASSIGNS. NOTHING CONTAINED HEREIN SHALL PRECLUDE THE OWNER FROM CONVEYING BY DEED THE STREETS, ROADS, OPEN SPACES AND PUBLIC SITES IN FEE TO HARFORD COUNTY, MARYLAND.

NO LOT WILL BE RESUBDIVIDED TO PRODUCE A BUILDING SITE OF LESS AREA OR WIDTH THAN THE MINIMUM REQUIRED BY SUBDIVISION REGULATIONS OR THE COUNTY HEALTH OFFICER.

FOUNTAIN GLEN CORP.  
 BY: *Richard G. Carter* (PRESIDENT)  
 DATE: 11-20-87



**PLAT III SECTION VII**  
**FOUNTAIN GLEN**  
 OWNER:  
 FOUNTAIN GLEN CORP.  
 8403 LOCHMEAD BLVD.  
 TOWSON, MD. 21284

ELECTION DISTRICT NO. 3 HARFORD COUNTY, MARYLAND



**GEORGE WILLIAM STEPHENS, JR. AND ASSOCIATES, INC.**  
 CONSULTING ENGINEERS AND LAND SURVEYORS  
 203 E. BROADWAY BEL AIR, MARYLAND 21014