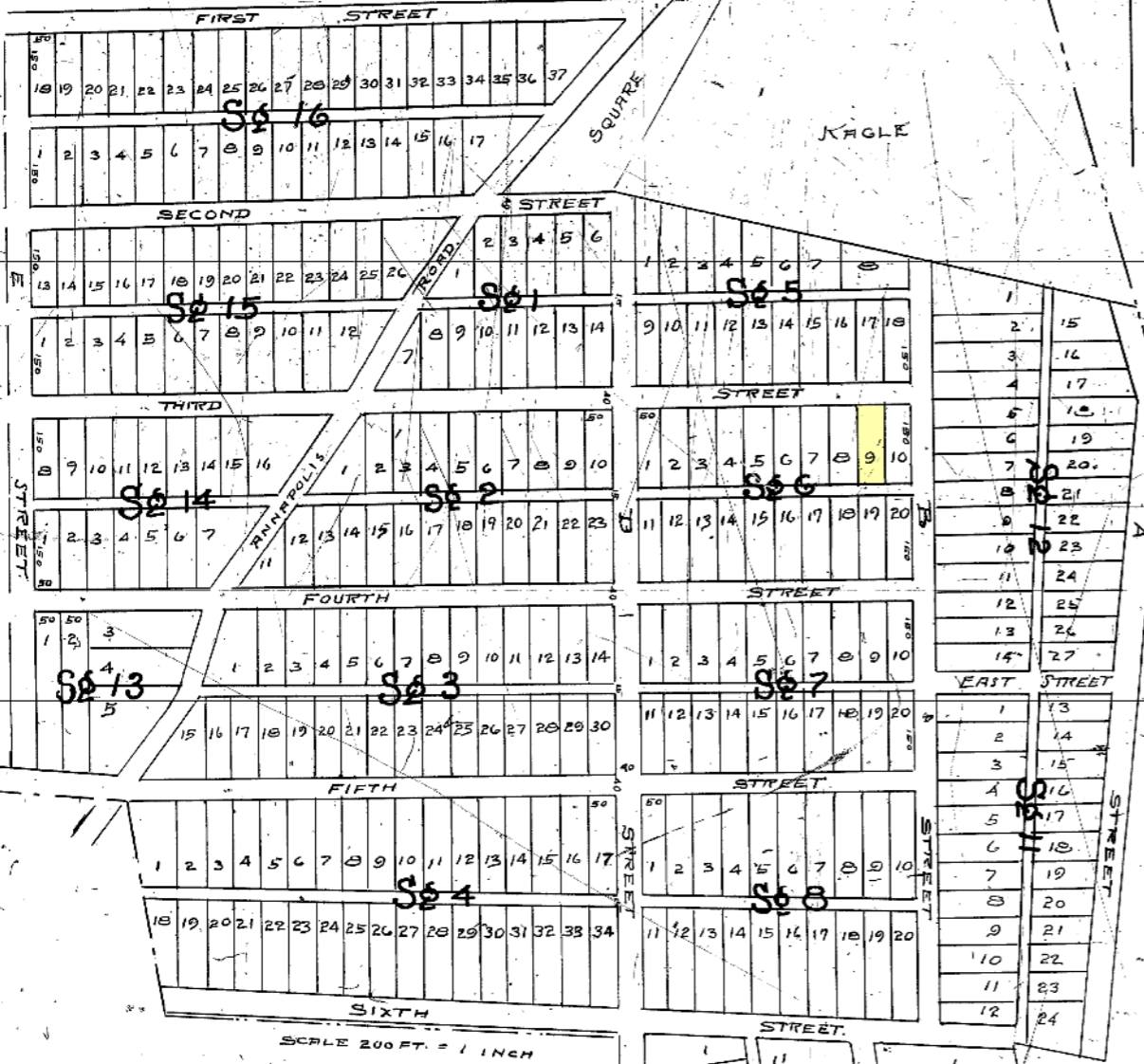


BACON HALL SUBDIVISION

PART OF
BACON HALL
KNOWN AS THE
ADDITION TO BACON HALL
ALSO
PART OF JANE OR JANE FIELD
SURVEYED BY
GEO. W. JACKSON
IN THE
YEAR 1895
SCALE 200'-1"

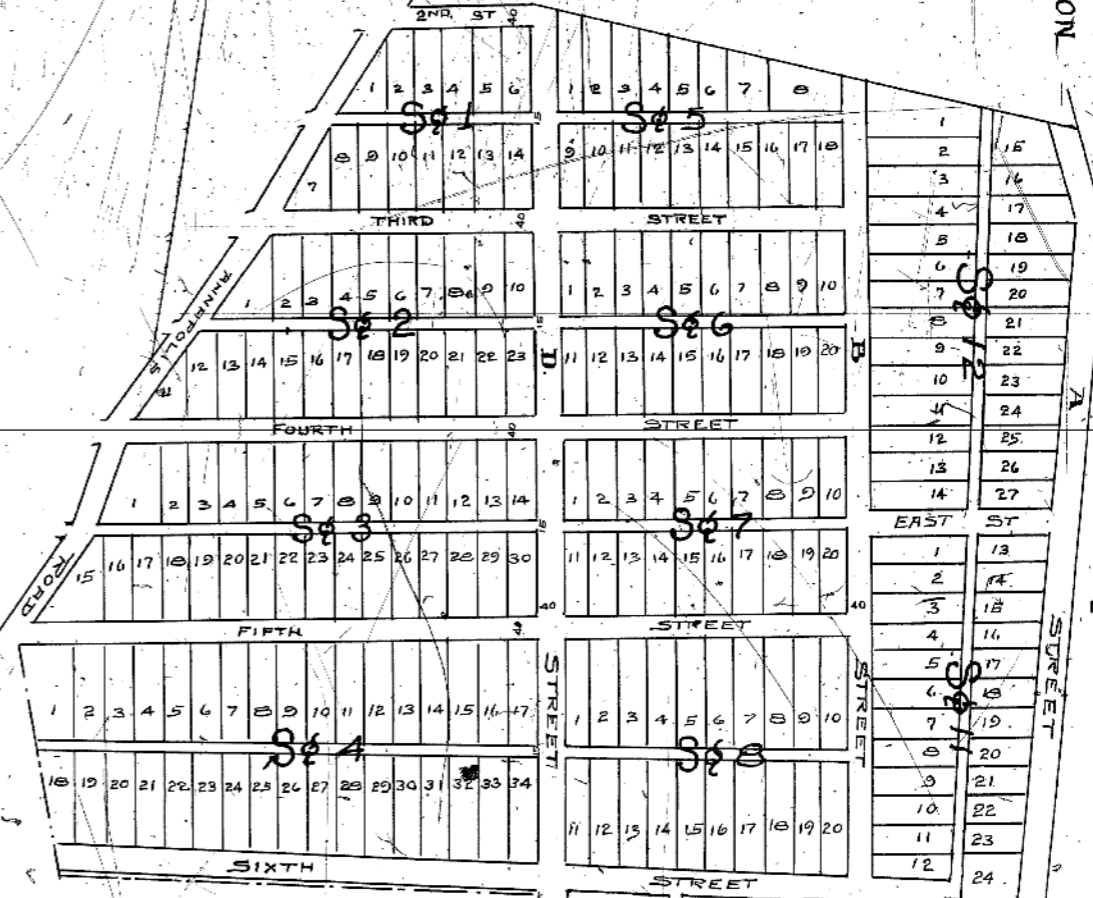
ENROLLED MAR. 7, 1895



ON THE NORTH SIDE OF BALTIMORE AND POTOMAC R.R., BETWEEN LANHAM AND SEABROOK STATIONS, 12 MILES FROM WASHINGTON CITY, D.C., SURVEYED 1894 AND 1896 BY GEORGE W. JACKSON ENROLLED THE 27TH DAY OF MARCH AD. 1897.

**MAP OF
HYNESBORO PARK,
PRINCE GEORGES COUNTY,
MARYLAND**

I hereby certify this to be a true copy of Plat recorded in Liber JW 87 p. 10 of Prince Georges County Maryland



I hereby certify this to be a true copy of Plat recorded in Liber JW 84 p. 10 of Prince Georges County Maryland Land Records. *George W. Jackson* Surveyor March 1931