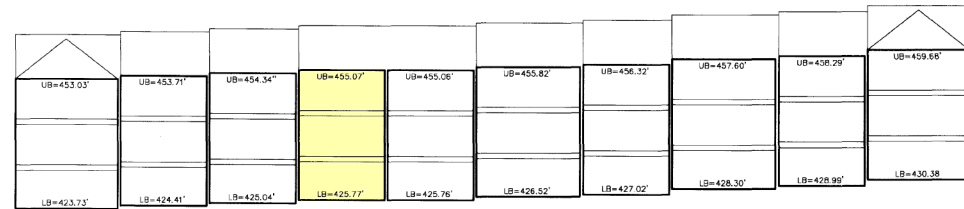
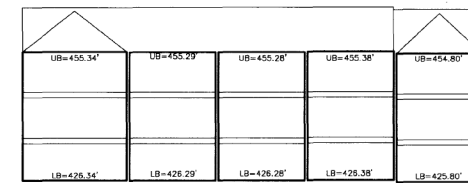


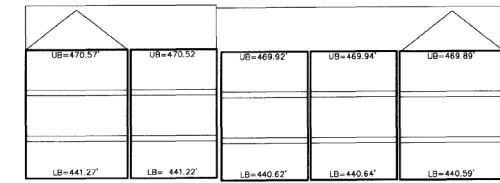
UNIT ELEVATIONS



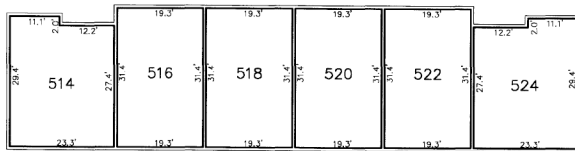
UNIT ELEVATIONS



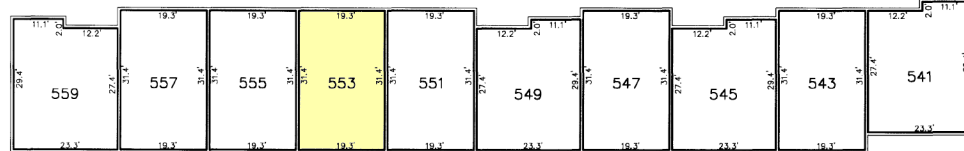
UNIT ELEVATIONS



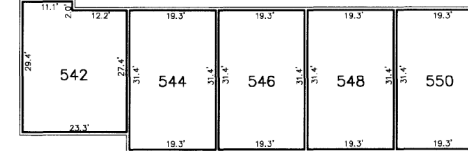
UNIT ELEVATIONS



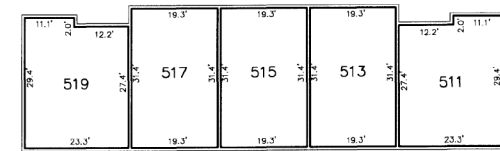
THIRD FLOOR



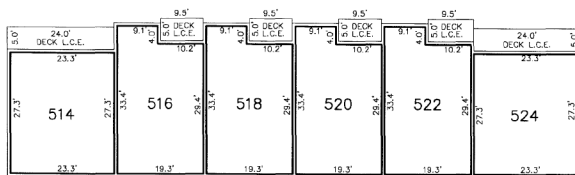
THIRD FLOOR



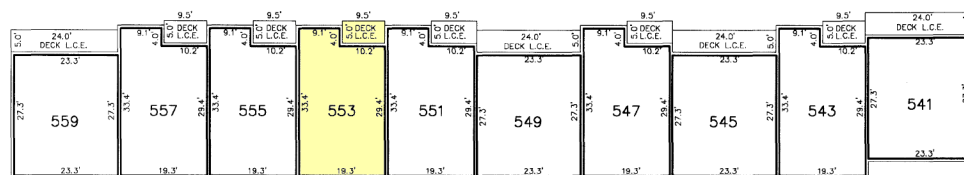
THIRD FLOOR



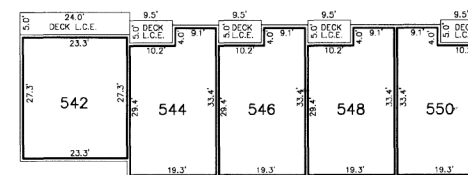
THIRD FLOOR



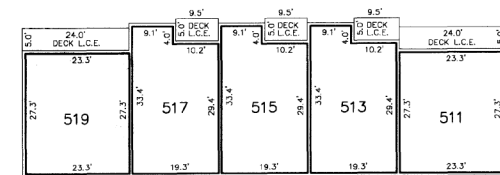
SECOND FLOOR



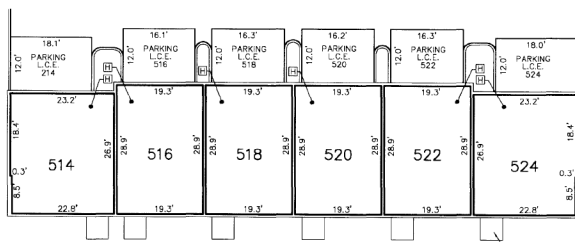
SECOND FLOOR



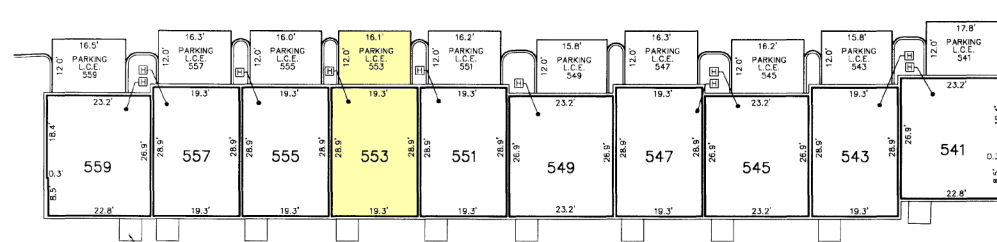
SECOND FLOOR



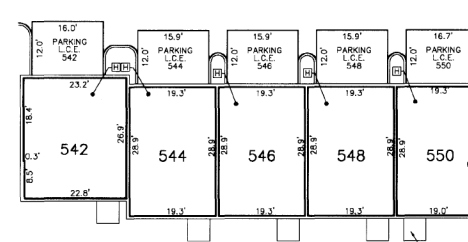
SECOND FLOOR



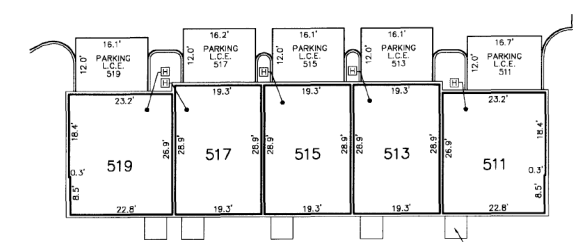
FIRST FLOOR  
RHAPSODY COURT  
BUILDING 2



FIRST FLOOR  
RHAPSODY COURT  
BUILDING 3



FIRST FLOOR  
RHAPSODY COURT  
BUILDING 4



FIRST FLOOR  
ENSEMBLE COURT  
BUILDING 9

**LEGEND**

- S.F. .... SQUARE FEET
- L.C.E. .... LIMITED COMMON ELEMENT
- L.B. .... LOWER UNIT BOUNDARY (BOTTOM)
- U.B. .... UPPER UNIT BOUNDARY (TOP)
- [Symbol] .... HEAT PUMP (AND ASSOCIATED UNIT)

**UNIT AREAS**

BUILDING 2		BUILDING 4	
514	1,919 S.F.	542	1,919 S.F.
516	1,769 S.F.	544	1,769 S.F.
518	1,769 S.F.	546	1,769 S.F.
520	1,769 S.F.	548	1,769 S.F.
522	1,769 S.F.	550	1,766 S.F.
524	1,919 S.F.		
BUILDING 3		BUILDING 9	
559	1,919 S.F.	519	1,919 S.F.
557	1,769 S.F.	517	1,769 S.F.
555	1,769 S.F.	515	1,769 S.F.
553	1,769 S.F.	513	1,769 S.F.
551	1,769 S.F.	511	1,919 S.F.
549	1,922 S.F.		
547	1,769 S.F.		
545	1,922 S.F.		
543	1,769 S.F.		
541	1,919 S.F.		

28-089  
SM  
28-089

THE PURPOSE OF THIS CONFIRMATORY PLAT OF CONDOMINIUM SUBDIVISION IS TO CORRECT THE ELEVATIONS OF THE UPPER UNIT BOUNDARIES (TOP).

CONFIRMATORY SUPPLEMENTAL PLAT OF CONDOMINIUM SUBDIVISION FOR

**HIGH VIEW AT HUNT VALLEY  
CONDOMINIUM, PHASE 2**

BEING PART OF  
LOT 1  
AMENDED PLAT OF HIGHPOINTE CENTER

RECORDED IN PLAT BOOK SM74 PAGE 39  
ELECTION DISTRICT No. 8  
BALTIMORE COUNTY, MARYLAND  
SCALE: 1" = 20' DATE: OCTOBER 7, 2004  
SHEET 3 OF 14



ENGINEERS ■ PLANNERS ■ LANDSCAPE ARCHITECTS ■ SURVEYORS ■ GPS SERVICES  
VIA INCORPORATED  
20251 CENTURY BOULEVARD-SUITE #400 ■ GERMANTOWN, MARYLAND 20874  
(301) 918-4100 ■ FAX (301) 918-2282  
GERMANTOWN, MD ■ NICHAN, VA ■ LEESBURG, VA

RECORDED: \_\_\_\_\_  
CONDO P.B.: \_\_\_\_\_  
CONDO PLAT: \_\_\_\_\_



PLAT RECORD  
TOTAL  
DATE: 10/13/2004  
BY: [Signature]  
15:00  
15:00  
2:23  
12:16 PM

C:\Projects\1258\Gwg\1258B00 PHASE 2.dwg 10/07/2004 11:25:15 AM EDT

P09765

BALTIMORE COUNTY CIRCUIT COURT (Condominium Plats, BA) Condominium Book SM 28, pp. 87-100, MSA 51265-1499, Date available 2004/10/19, Printed 10/06/2023.