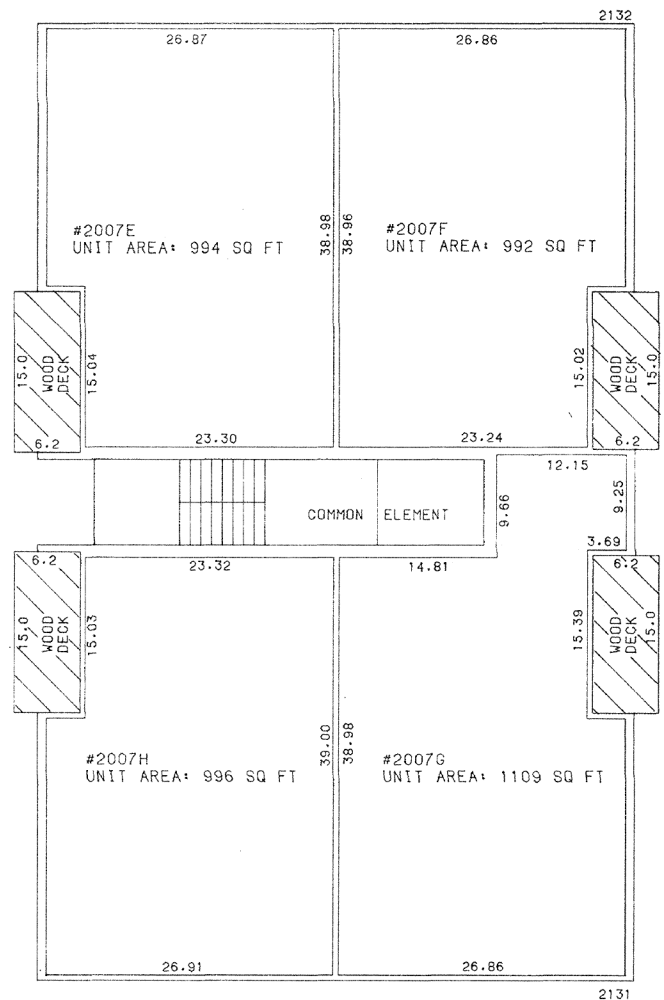
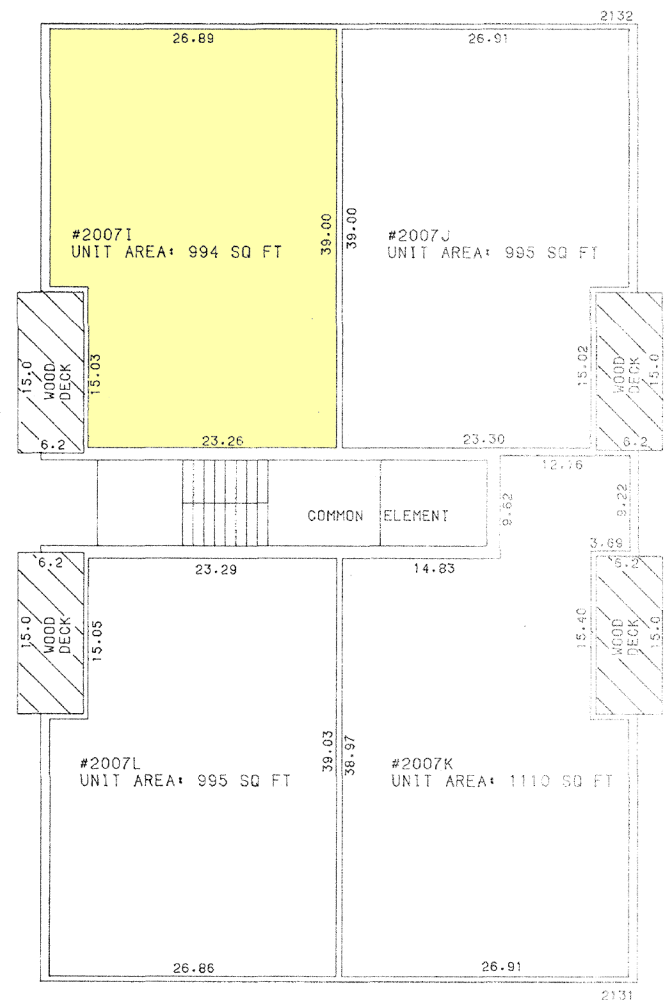


LOWER LEVEL

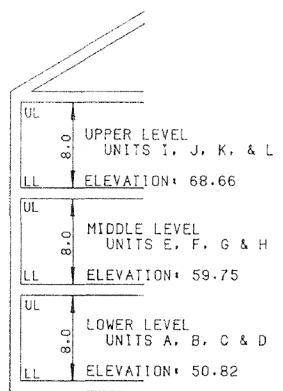


MIDDLE LEVEL



UPPER LEVEL

UNIT DETAILS - #2007 MAGNOLIA WOODS COURT



LEGEND
 LL: LOWER LIMIT OF UNIT
 UL: UPPER LIMIT OF UNIT
 #2007A: UNIT NUMBER & ADDRESS

INDICATES LIMITED COMMON ELEMENT

NOTE:
 THE DETAILS SHOWN ON THIS SHEET ARE SCHEMATIC.
 THE SCALE OF 1"=10' IS APPROXIMATE.

THIS SHEET IS PART OF A CONDOMINIUM PLAT CONSISTING OF 3 SHEETS. SHEET B3 OF 3

RECORDING STAMP Rec'd for Record <u>01.0.1989</u> at <u>10:00</u> o'clock <u>A</u> M Same day recorded in Liber <u>C6H</u> No. <u>1246</u> Folio <u>46</u> one of the <u>1246</u> Records of Harford Co., Md. and examined per Charles G. Hibbitt, Clerk	PHASE TWO MAGNOLIA WOODS CONDOMINIUM LOCATED ON MAGNOLIA WOODS LANE A CONDOMINIUM DEVELOPMENT BY GAST CONSTRUCTION CO., INC. FIRST ELECTION DISTRICT HARFORD COUNTY, MARYLAND	
	FREDERICK WARD ASSOCIATES, INC. BEL AIR, MARYLAND • ENGINEERS • PLANNERS • LANDSCAPE ARCHITECTS	
SCALE: 1"=10' DATE: 09/01/89 DR. BY: VYN/Vex CK'D. BY: JK JOB NO.: 89272		

MSA 35U 1246-3575-2