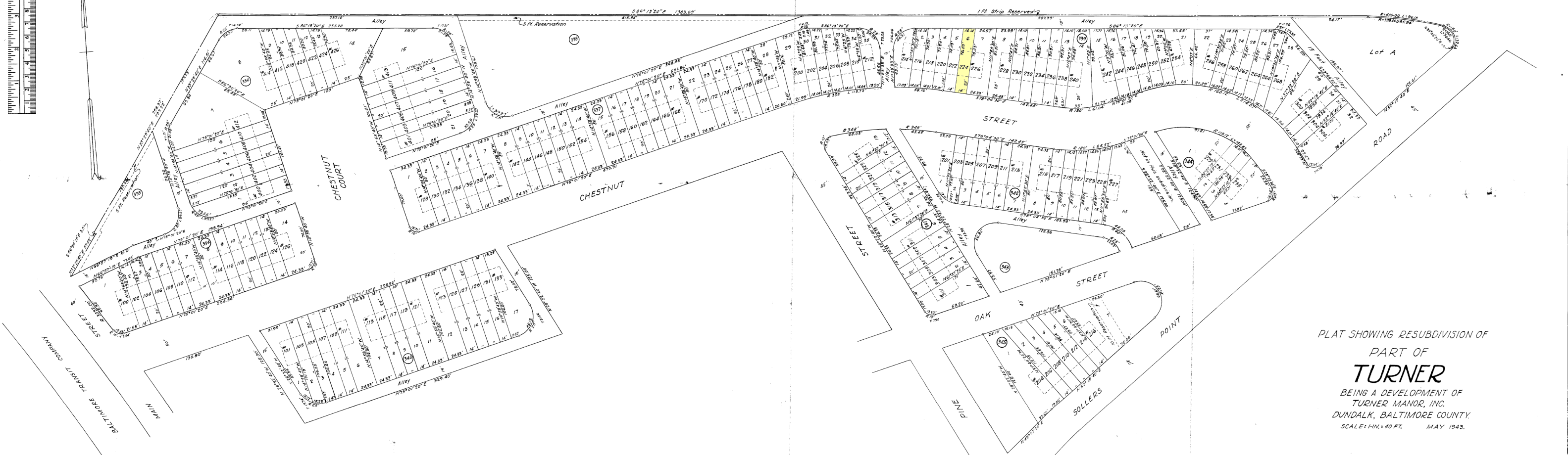


DUNDALK

AVENUE



PLAT SHOWING RESUBDIVISION OF  
 PART OF  
**TURNER**  
 BEING A DEVELOPMENT OF  
 TURNER MANOR, INC.  
 DUNDALK, BALTIMORE COUNTY.  
 SCALE: 1" = 40 FT.      MAY 1943.

322 N. CHARLES ST.  
 FEB 24 1944

BALTIMORE COUNTY CIRCUIT COURT (Plat) Plat Book CHK 13, pp. 86, MSK C7336\_1339 Date available 19/04/2025. Printed 08/18/2023.