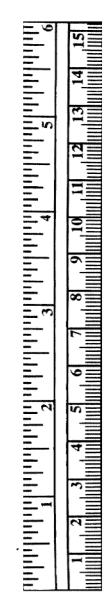
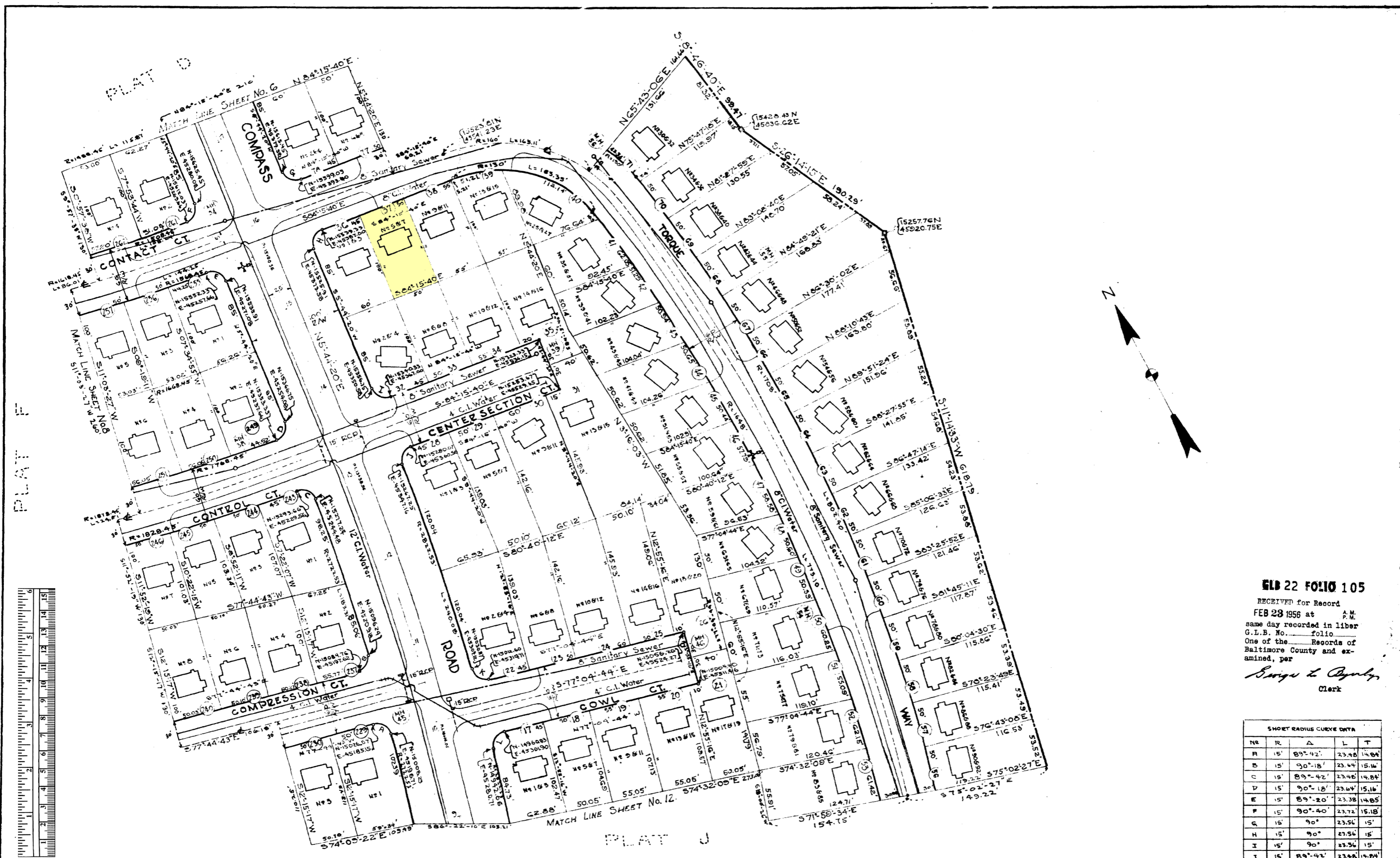


BALTIMORE COUNTY CIRCUIT COURT (Subdivision Plats, BA) Plat Book GLB 22, p. 105, MSA_S1236_1423. Date available 1956/02/23. Printed 06/29/2023.



GLB 22 FOLIO 105

RECEIVED for Record
FEB 23 1956 at A.M.
same day recorded in liber
G.L.B. No. folio
One of the Records of
Baltimore County and ex-
amined, per

Swig L. Ogden
Clerk

SHORT RADIUS CURVE DATA				
NO	R	Δ	L	T
A	15'	89°-42'	23.48	14.84
B	15'	90°-18'	23.64	15.16
C	15'	89°-42'	23.48	14.84
D	15'	90°-18'	23.64	15.16
E	15'	89°-20'	23.38	14.85
F	15'	90°-40'	23.72	15.18
G	15'	90°	23.54	15'
H	15'	90°	23.54	15'
I	15'	90°	23.54	15'
J	15'	89°-42'	23.48	14.84
K	15'	89°-42'	23.48	14.84
L	15'	89°-42'	23.48	14.84

NOTES
THE STREETS AND OR ROADS HEREON AND THE MENTION THEREOF IN DEEDS ARE FOR THE PURPOSE OF DESCRIPTION ONLY AND THE SAME ARE NOT INTENDED TO BE DEDICATED FOR PUBLIC USE. THE REAL SIMPLE TITLE TO THE BEGS THEREOF IS EXPRESSLY RESERVED IN THE GRANTORS OF THE DEED TO WHICH THIS PLAT IS ATTACHED, THEIR HEIRS & ASSIGNS.

NOTE
COORDINATES SHOWN HEREON ARE EXTENSIONS MADE FROM BALTIMORE CITY COORDINATES. BEARINGS REFER TO TRUE NORTH AT BALTIMORE CITY.

BALTIMORE COUNTY PLANNING BOARD
APPROVED BY: *[Signature]* 1/30/56
DIRECTOR

BALTIMORE COUNTY HEALTH DEPARTMENT
APPROVED BY: *[Signature]* 1/30/56
DEPUTY STATE & CO HEALTH OFFICER

ALIGNMENT & LOCATION OF STREETS
APPROVED BY: *[Signature]* 1/30/56
ROADS ENGINEER OF BALT. CO. MD.

ENGINEERS & OWNERS CERTIFICATE
CERTIFICATION IS HEREBY MADE THAT ALL OF THE REQUIREMENTS OF SECTION 21 TO 24 OF ARTICLE 17 OF THE ANNOTATED CODE OF MARYLAND (BEFORE EDITION) HAVE BEEN COMPLIED WITH AND THAT IT COMPLETES THE MAKING OF THIS PLAT & THE SETTING OF THE MARKERS UNITS STATES OF AMERICA, OWNER
BY: *[Signature]* DIRECTOR, WASHINGTON FIELD OFFICE

VICTORY VILLA - SECTION I - PLAT G
LOT SUBDIVISION PLAT ROADS & UTILITIES
BALTIMORE COUNTY, MARYLAND
15TH ELECTION DISTRICT

WILLIAM F. NEALE & ASSOCIATES
CIVIL ENGINEERS
BALTIMORE, MD.

DRAWING No. 9 OF 20
SCALE: 1" = 30'
ALTERATIONS & ADDITIONS
BY EDITHA A. JOHN B. DELANCEY
OCT. 1956 LAND SURVEYORS REG. 606