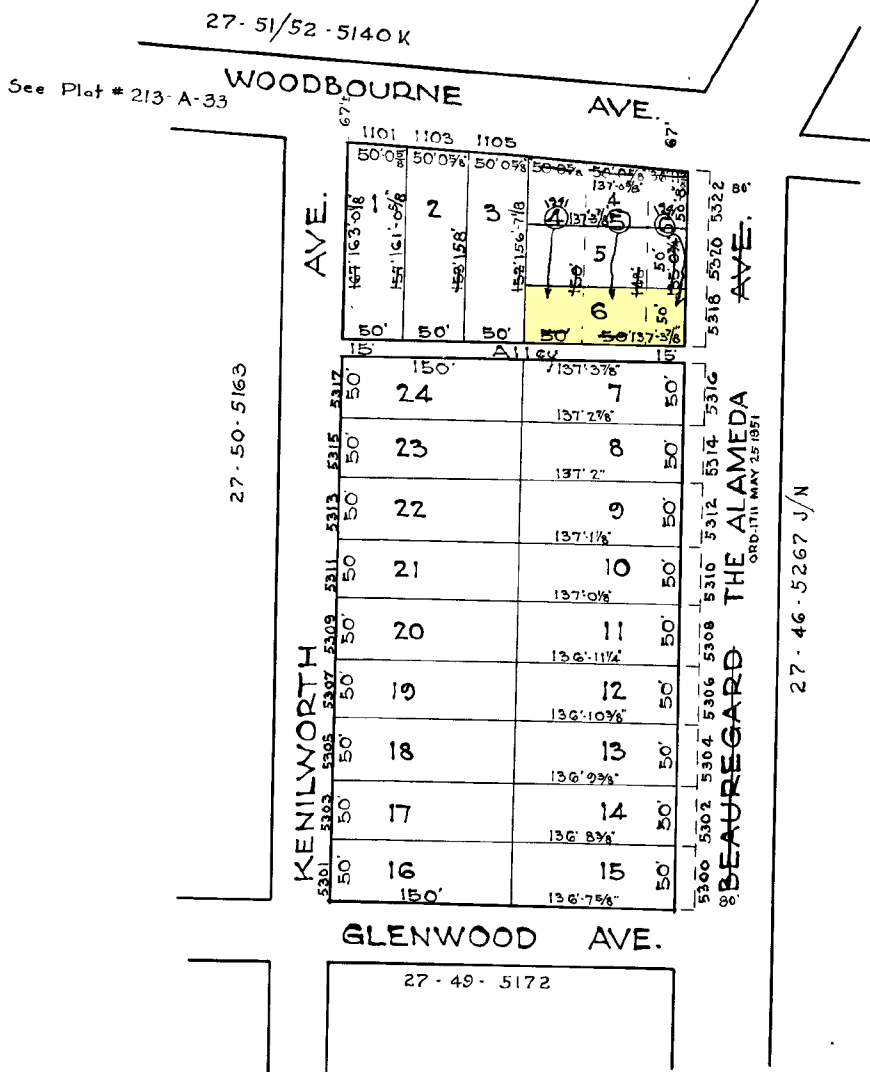
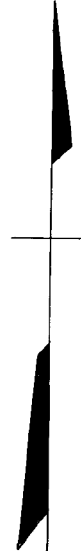


REVISIONS

Lots 4,5&6 Per App 5019/22 C.Sh. 2508
 Lots 1,2&3 Dim. Cor. Per Deeds C.Sh. 2509A
 House Numbers On Lots 4&8 Per PS C.Sh. 2633A
 Lots 9 To 14 House Nos Per App. 1547/52 C. Sh. 3564.
 Lots 15 & 16 House Nos Per Bor S. C. Sh. 4287A.
 Lots 4 to 15 St. Name Changed Per Ord. C. Sh. 5500B



NOTICE
 THIS IS A REAL PROPERTY PLAT AS PROVIDED FOR UNDER ARTICLE 76(4) OF THE CITY CHARTER. IT IS COMPILED FROM TITLE AND OTHER SOURCES AND IS NOT AN AUTHENTIC SURVEY

5164
 CITY OF BALTIMORE
 DEPARTMENT OF PUBLIC WORKS
 BUREAU OF PLANS & SURVEYS
 PROPERTY LOCATION DIVISION
 WARD 27 SECTION 50
 BLOCK 5164
 SCALE 1"=100' 0" DATE OCT. 1931

TRACED BY C. BAIN
 LETTERED BY Ed Moorehead
 CHECKED BY

NOTE - BLOCK 27-9-23 FOR 1941
 NOTE + BLOCK 27-9-5164 FOR 1946