

ELEVATION

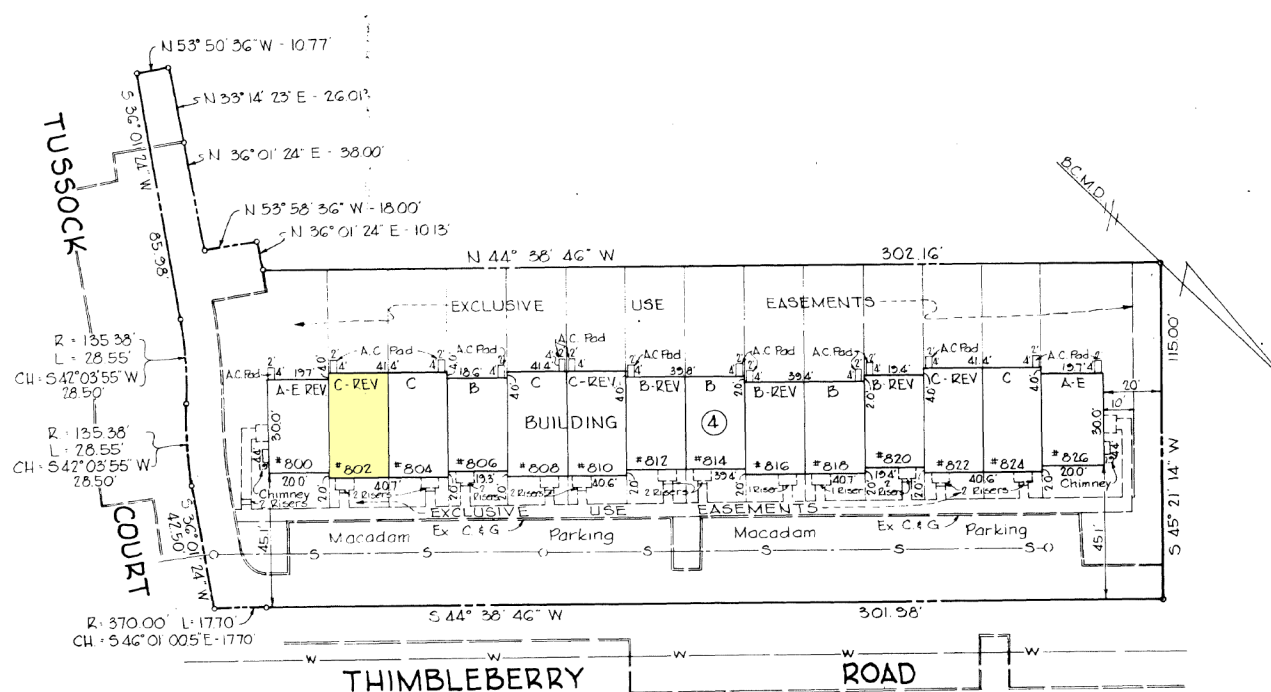
Unit No.	Elev. A	Elev. B	Elev. C	Elev. D	Elev. E	Elev. F	Elev. G
*800	45.88	54.21	63.04	71.04	76.87	78.37	44.55
*802	45.88	54.21	63.04	71.04	76.87	—	44.55
*804	45.88	54.21	63.04	71.04	76.87	—	44.55
*806	45.88	54.21	63.04	71.04	76.87	—	44.55
*808	47.24	55.57	64.40	72.40	78.23	—	45.91
*810	47.24	55.57	64.40	72.40	78.23	—	45.91
*812	47.24	55.57	64.40	72.40	78.23	—	45.91
*814	47.24	55.57	64.40	72.40	78.23	—	45.91
*816	47.24	55.57	64.40	72.40	78.23	—	45.91
*818	47.24	55.57	64.40	72.40	78.23	—	45.91
*820	48.56	56.89	65.72	73.72	79.55	—	47.23
*822	48.56	56.89	65.72	73.72	79.55	—	47.23
*824	48.56	56.89	65.72	73.72	79.55	—	47.23
*826	48.56	56.89	65.72	73.72	79.55	81.05	47.23

LEGEND

- Existing Sanitary Line S — S — S
- Existing Water Line W — W — W
- Existing Curb — — — — —
- Existing Walkway - - - - -
- Building Number (4)
- Unit Number #800

A-REV
*82
Unit Number

Unit Type represented by letters A, B, C & AE. The "REV" is the "Mirror Image" of that type unit. Typical Basement, 1st Fl., 2nd Fl. & Attic Fl. plans for these units are shown on a plat entitled "TYPICAL FLOOR PLANS FOR CHESTNUT WOODS CONDOMINIUM, PHASE 1" recorded among the Plat Records of Baltimore County, Md., in Liber E.H.K. Jr 5 Folio 106.



SURVEYOR'S CERTIFICATION

I, Max O. Peabody, Jr., a Professional Land Surveyor holding Maryland Registration Land Surveyor #8757 do hereby certify that the buildings, condominium units and common elements are located as shown, that it is based on an accurate transit-tape "as built" survey and was prepared for the purpose of establishing CHESTNUT WOODS CONDOMINIUM, PHASE 2.

I further certify that I have located the improvements on the lot shown hereon, that such improvements exist, and that said improvements lie entirely within the boundaries, and that these plats, together with the applicable wording of the declaration, are a correct representation of the condominium described and the identification and location of each unit and the common elements as constructed, can be determined from them.



8757 *Max O. Peabody, Jr.* 10/22/76
Reg. No. Date

PLAT OF EXCLUSIVE USE EASEMENTS, UTILITIES AND ELEVATIONS FOR CHESTNUT WOODS CONDOMINIUM PHASE 2

E.H.K., JR. 5 FOLIO 108

Filed for record
Date NOV 4 1976
Book:

BALTIMORE CO., MD.
SCALE: 1" = 30'

ELECT DIST #15
OCT. 22, 1976

James S. [Signature] Clerk

OWNER & DEVELOPER
CHESTNUT WOODS LIMITED PARTNERSHIP
204 Heaver Plaza
Lutherville, Md. 21093

	APPROVED BY BALTIMORE COUNTY HEALTH DEPARTMENT <i>Donald [Signature]</i> DEPUTY STATE & COUNTY HEALTH OFFICER DATE	GEORGE WILLIAM STEPHENS, JR. AND ASSOCIATES, INC. CIVIL ENGINEERS & LAND SURVEYORS TOWSON, MARYLAND 21204 BEL AIR, MARYLAND 21014	
	APPROVED BY BALTIMORE COUNTY PLANNING BOARD DATE 11/4/76 DIRECTOR	APPROVED AS TO ALIGNMENT AND LOCATION OF STREETS <i>George [Signature]</i> 11/4/76 ROADS ENGINEER OF BALTIMORE CO., MD. DATE	P.W.A. COMPLETED _____ FINAL PLAT CHECKED: _____ PLANNING _____ ENGINEERING _____ DATE _____