

THE REQUIREMENTS OF SECTIONS 72A, 72B, 72C, 72D, OF ARTICLE 17 OF THE ANNOTATED CODE OF MARYLAND, 1939 EDITION, TITLE 5, SECTIONS 1-10, AS ENACTED BY THE CLERK OF CIRCUIT COURTS AT F&B, AS THEY RELATE TO THE MAKING OF THIS PLAT AND SETTING OF THE MARKERS, HAVE BEEN COMPLIED WITH.

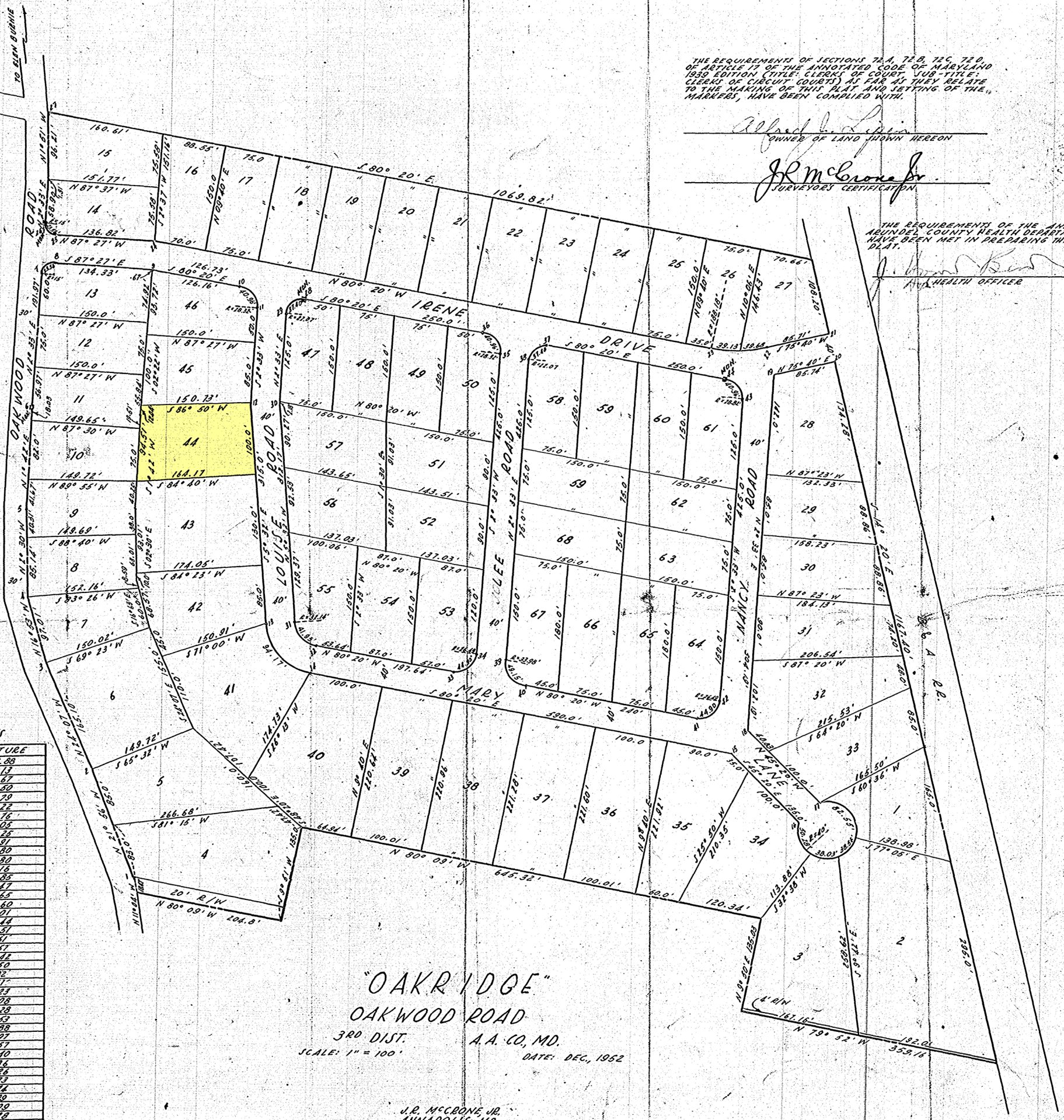
*Alfred L. P...
OWNER OF LAND SHOWN HEREON*

*J.R. McBone Jr.
SURVEYOR'S CERTIFICATION*

THE REQUIREMENTS OF THE ANNAPOLIS HEALTH DEPARTMENT HAVE BEEN MET IN PREPARING THIS PLAT.

*J. ...
HEALTH OFFICER*

BOOK 23, p. 40, MSA S1235-3046. Date available 1952/12/31. Printed 04/17/2023.



COORDINATES

NO.	LATITUDE	DEPARTURE
1	913.42	2163.88
2	1069.25	2101.13
3	1219.94	2033.67
4	1312.76	2005.50
5	1397.62	2001.79
6	1579.72 MON.	2004.22
7	1771.50	2012.76
8	1785.60	2028.05
9	1779.62	2162.25
10	1754.16	2311.91
11	1729.17	2310.80
12	1594.31	2304.80
13	1280.79	2335.76
14	1216.63	2324.85
15	1171.66	2316.47
16	1059.87	2317.65
17	1071.71	3100.60
18	1149.74	3001.01
19	1654.97	3023.14
20	1674.19	3106.51
21	1712.94	3026.61
22	1691.72	3013.57
23	1688.49	2935.42
24	1819.46	2166.50
25	1825.55	2029.82
26	1841.12 MON.	2076.67
27	1898.96	2018.23
28	1997.43	2018.08
29	1743.19 MON.	2376.28
30	1727.41	2330.53
31	1597.36	2344.88
32	1284.65	2374.97
33	1252.88	2371.97
34	1247.88	2596.70
35	1247.97	2597.34
36	1572.05	2446.24
37	1701.21	2422.73
38	1686.07	2711.74
39	1684.29	2805.89
40	1240.72	2667.09
41	1206.04	2695.19
42	1765.74	2931.87
43	1790.66	2962.82
44	1615.23	2981.72
45	1644.09 MON.	2958.19

"OAKRIDGE"
OAKWOOD ROAD
3RD DIST. A.A. CO., MD.
SCALE: 1" = 100'
DATE: DEC., 1952

J.R. McBONE, JR.
ANNAPOLIS, MD.

