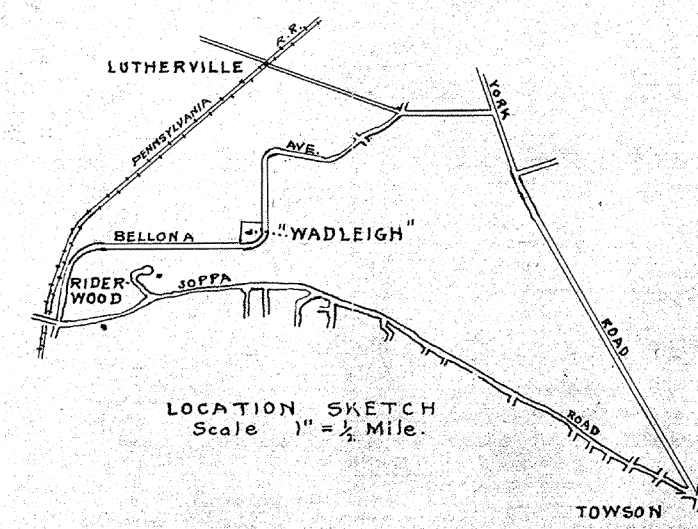


EIGHTH DIST. BALTIMORE COUNTY  
 MARYLAND  
 PLAT OF  
 "WADLEIGH"



The Streets and/or Roads shown hereon and the mention thereof in deeds is for the purpose of description only the same are not intended to be dedicated to public use the fee simple title to the beds thereof is expressly reserved in the grantors of the deed to which this plat is attached their heirs and assigns.

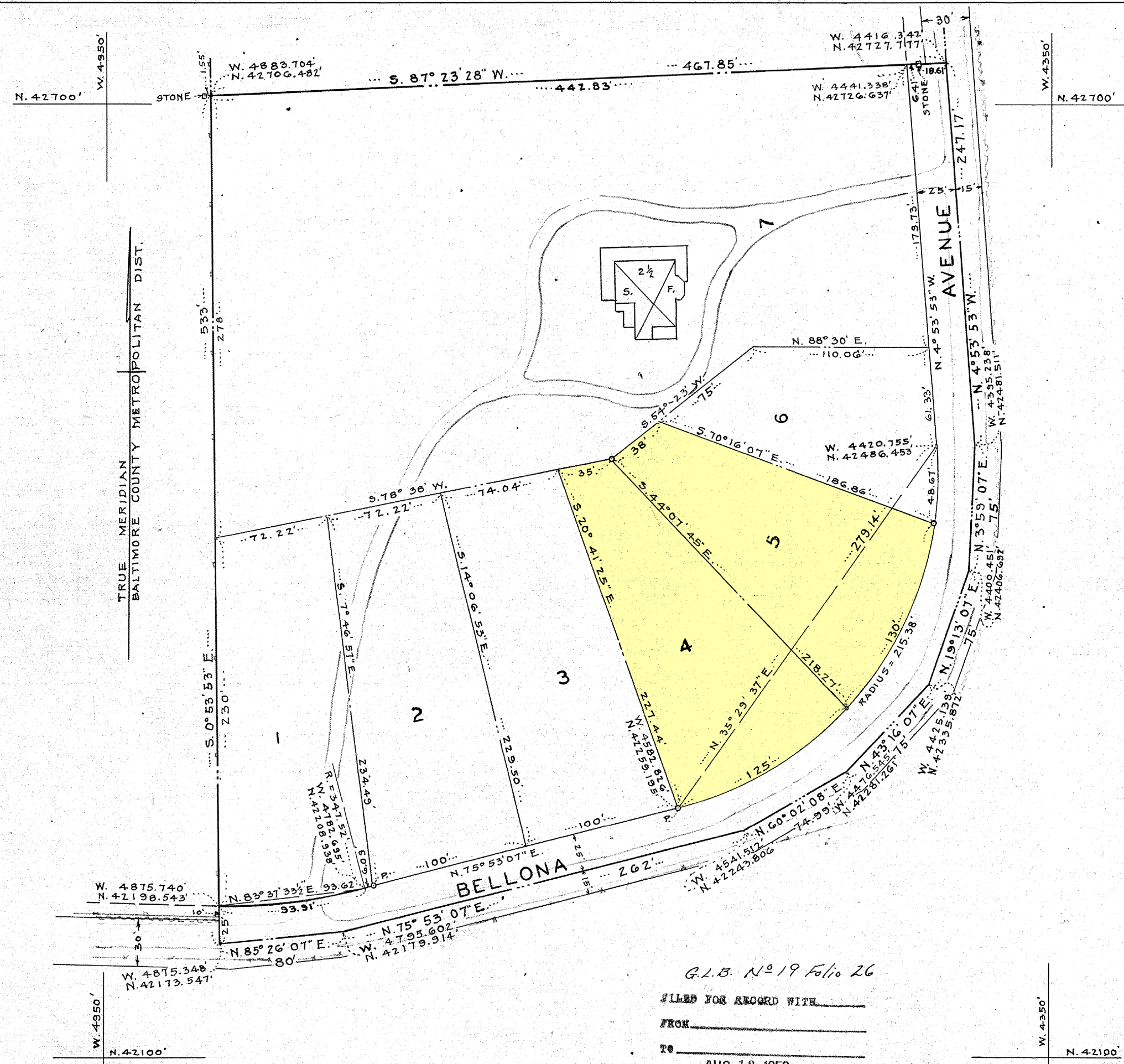
Approved: *Malcolm F. Dill*  
 Director, Balto. Co. Planning Commission.  
 Date *Aug 5, 1953*

Approved: *Robert J. Hays*  
 Roads Engineer, Highways Department of  
 Baltimore County.  
 Date *Aug 7, 1953*

BALTIMORE COUNTY TRAVERSE	
STATION	COORDINATES
9605	W. 4456.32' N. 43624.54'
9606	W. 4267.54' N. 43959.88'

This is to certify that this plat represents a survey made by me and that the monuments are correctly shown as they actually exist, in accordance with Section 72 B, Article 17, of the Annotated Code of Maryland 1947 Supplement.

W. C. Warren,  
 Land Surveyor, State Register #591,  
 1903 Gwynn Oak Ave. Baltimore 7, Md.  
 WDLN 460.



BALTIMORE COUNTY CIRCUIT COURT (Subdivision Plats, BA) Plat Book G.L.B. 19, p. 26, MSA\_51236\_826. Date available 1953/08/13. Printed 04/26/2023.

This is to certify that we have complied with Sections 71 to 74, Article 17, of the Maryland Code 1951 Edition.

*George W. Wadsworth*  
 Owners.

G.L.B. No 19 Folio 26

FILED FOR RECORD WITH \_\_\_\_\_  
 FROM \_\_\_\_\_  
 TO \_\_\_\_\_  
 AUG 13 1953  
 BY *George W. Wadsworth*  
 Clerk.

P176535

Maryland State Archives  
 1  
 2  
 3  
 4  
 5  
 6