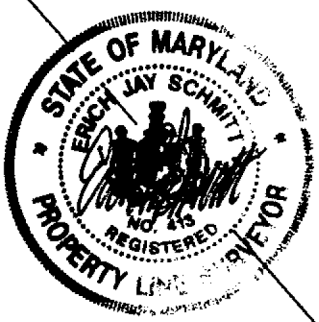
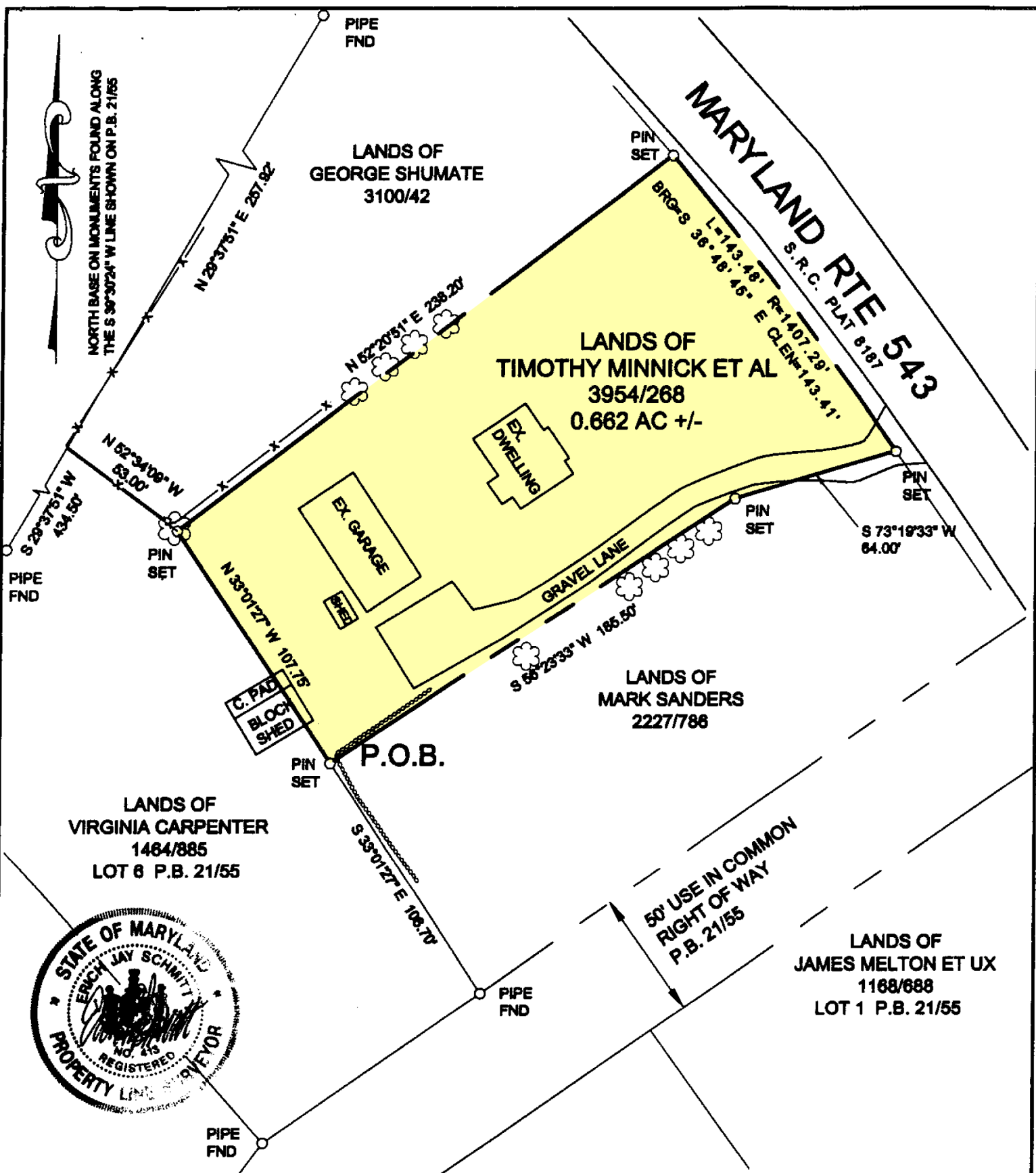


HARFORD COUNTY CIRCUIT COURT (Land Records) JUR 4876, p. 0286, MSA\_CE54\_4763, Date available 05/28/2004, Printed 02/09/2023.



DATE 9-06-02	<b>HIGHLAND SURVEY ASSOCIATES, INC.</b>  4501 FAWN GROVE ROAD STREET, MARYLAND 21154  410-836-1238	PLAT TO ACCOMPANY LEGAL DESCRIPTION LANDS OF
SCALE 1" = 50'		<b>TIMOTHY MINNICK ET AL</b>
DRAWN EJS		THIRD ELECTION DISTRICT HARFORD COUNTY MARYLAND
JOB 20057		

LIBER 4876 FOLIO 286