

CURVE DATA

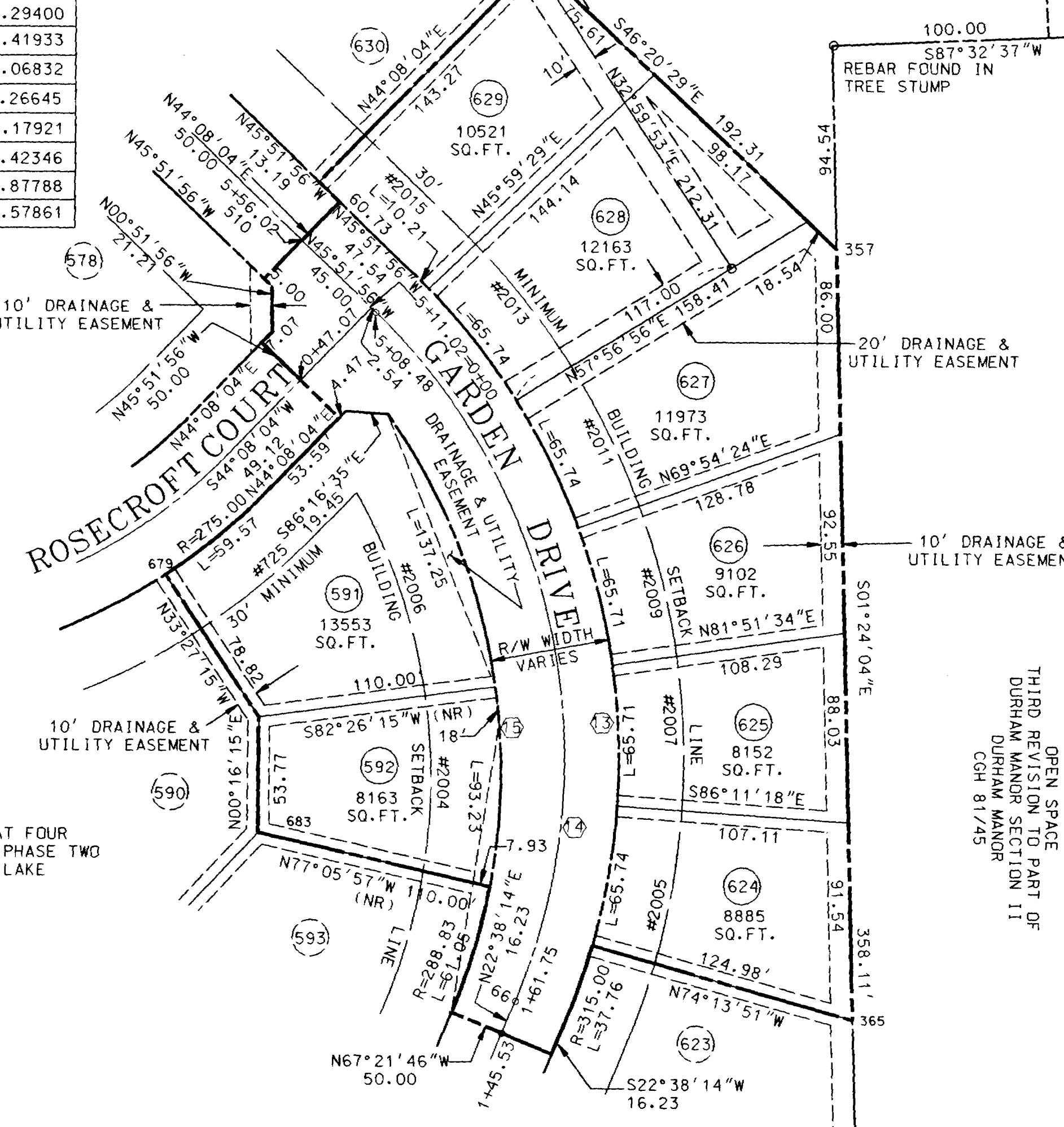
No.	RADIUS	ARC LENGTH	DELTA	TANGENT	LONG CHORD
13	315.00	376.61	68°30'10"	214.49	S11°36'51"E 354.58
14	290.00	346.72	68°30'10"	197.46	N11°36'51"W 326.44
15	288.83	291.52	57°49'47"	159.54	N06°16'40"W 279.30

COORDINATE DATA

No.	NORTHING	EASTING
351	692265.38900	1486936.29400
66	691782.57775	1486928.41933
679	691979.71011	1486766.06832
683	691860.18240	1486809.26645
365	691774.62688	1487084.17921
357	692132.62649	1487075.42346
68	692104.10073	1486860.87788
510	692135.43864	1486828.57861

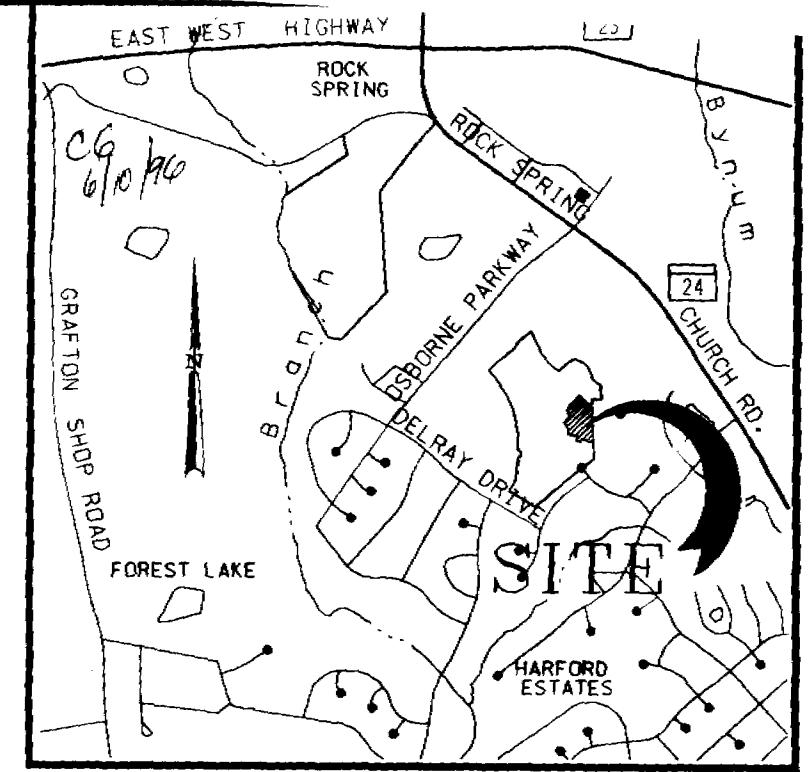
FINAL PLAT FOUR SECTION TEN PHASE TWO FOREST LAKE

OTHER LANDS OF FOREST LAKE L.L.C. CGH 2342/374



PRIOR TO RECORDING PART OF TAX MAP: 40 GRID: 2D PARCEL: 388

88-75



VICINITY MAP 1"=2000'

GRID NORTH MD COORDINATE SYSTEM (NAD83/86)

AREA TABULATION

- TOTAL ENCLOSED AREA: 2.4203 AC.±
- TOTAL NET LDT AREA: 1.8942 AC.±
- TOTAL ROAD R/W AREA: 0.5261 AC.±
- TOTAL OPEN SPACE AREA: 0.0000 AC.±

SUBDIVISION DATA

- TOTAL NUMBER OF LOTS: 8
- ③ - INDICATES LOT NUMBER
- #0000 - INDICATES HOUSE NUMBER
- DEED REFERENCE: CGH 2342/374
- PRESENT ZONING: R-2 COS

PUBLIC WORKS AGREEMENT DATED MAY 31, 1996

THE SIGNING OF THIS SUBDIVISION PLAT IN NO WAY GUARANTEES THE AVAILABILITY OF PUBLIC SERVICES AT THE TIME OF DEVELOPMENT.

DRIVEWAY ENTRANCE CONSTRUCTION AND LOCATION TO BE APPROVED BY THE HARFORD COUNTY DEPARTMENT OF PUBLIC WORKS FOR DRIVEWAY ENTRANCES FRONTING ON COUNTY ROADS.

THIS SUBDIVISION MUST COMPLY WITH STATE REGULATIONS FOR UNDERGROUND ELECTRIC DISTRIBUTION AND TELEPHONE SERVICES.

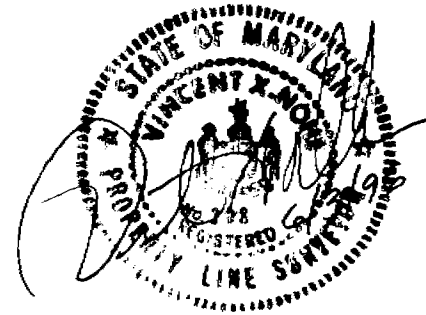
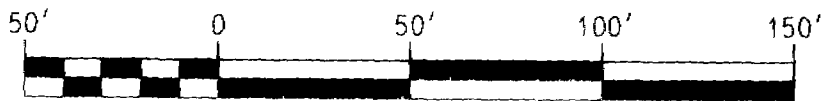
DIRECT VEHICULAR ACCESS FROM OR TO ANY LOT SHOWN ON THIS PLAT VIA BEAR CREEK DRIVE IS PROHIBITED.

DURHAM MANOR TOWNHOUSE HOMEOWNERS ASSOCIATION, INC. CGH 2149/155

THIRD REVISION TO PART OF DURHAM MANOR SECTION 11 CGH 81/45

THE USE OF THE COMMUNITY WATER SUPPLY AND/OR OF THE COMMUNITY SEWERAGE SYSTEM IS IN CONFORMANCE WITH THE HARFORD COUNTY MASTER PLAN.

John J. Searcy, HEALTH OFFICER



APPROVED: *John J. Searcy*, M.S., R.D. 6/28/96
 HEALTH OFFICER DATE

APPROVED: *James S. Pyle*, 7-1-96
 DIRECTOR OF PARKS & RECREATION DATE

APPROVED: *William B. ...*, 7/24/96
 DIRECTOR OF PUBLIC WORKS DATE

APPROVED: *Orde Cone ...*, 7-29-96
 DIRECTOR OF PLANNING AND ZONING DATE

APPROVED: *...*, 7-30
 DATE

APPROVED: *...*, 7/30/96
 DATE

APPROVED: *Felicia ...*, 7-31-96
 COUNTY EXECUTIVE DATE

THE OWNER HEREBY GRANTS TO HARFORD COUNTY, MARYLAND AN EASEMENT FOR THE CONSTRUCTION, MAINTENANCE, REPAIR, AND REPLACEMENT OF WATER, SEWER AND STORM DRAINAGE LINES WITHIN THE DRAINAGE AND UTILITY EASEMENTS AND ROAD IMPROVEMENT RIGHTS-OF-WAY AS SHOWN ON THE PLAT.

UNLESS OTHERWISE PROVIDED ON THIS PLAT, THE STREETS, ROADS, OPEN SPACES AND PUBLIC SITES SHOWN HEREON AND THE MENTION THEREOF IN DEEDS ARE FOR THE PURPOSES OF DESCRIPTION ONLY AND THE SAME ARE NOT INTENDED TO BE DEDICATED TO PUBLIC USE; THE FEE SIMPLE TITLE TO THE LAND SO SHOWN IS EXPRESSLY RESERVED TO THE PRESENT OWNER(S) SHOWN ON THIS PLAT. THEIR SUCCESSORS, HEIRS AND ASSIGNS. NOTHING CONTAINED HEREIN SHALL PRECLUDE THE OWNER FROM CONVEYING BY DEED THE STREETS, ROADS, OPEN SPACES AND PUBLIC SITES IN FEE TO HARFORD COUNTY, MARYLAND.

NO LOT WILL BE RESUBDIVIDED TO PRODUCE A BUILDING SITE OF LESS AREA OR WIDTH THAN THE MINIMUM REQUIRED BY SUBDIVISION REGULATIONS OR THE COUNTY HEALTH OFFICER.

Charles L. Vickers, Jr., MANAGING MEMBER FOREST LAKES, L.L.C. DATE 6-3-96

RECORDING STAMP

Rec'd. for Record 7-31-96 at 3:13 o'clock P.m. Same day recorded in Liber C.G.H. No. 88 Folio 25 one of the PLAT Records of Harford Co., Md. and examined per Charles G. Hiob, III, Clerk

FINAL PLAT THREE - SECTION TEN - PHASE ONE

FOREST LAKE

A RESIDENTIAL DEVELOPMENT FOREST LAKES, L.L.C. 14 BACK RIVER NECK ROAD BALTIMORE, MARYLAND 21221

THIRD ELECTION DISTRICT - HARFORD COUNTY, MARYLAND

FREDERICK WARD ASSOCIATES, INC. ENGINEERS PLANNERS LANDSCAPE ARCHITECTS 5 SOUTH MAIN STREET BEL AIR, MARYLAND 21014 - 0727 (410) 838 - 7900 (410) 879 - 2090

SCALE: 1"=50' DATE: 03/13/96 DR. BY: ECB CK'D. BY: JOB NO.: 95119

152-96