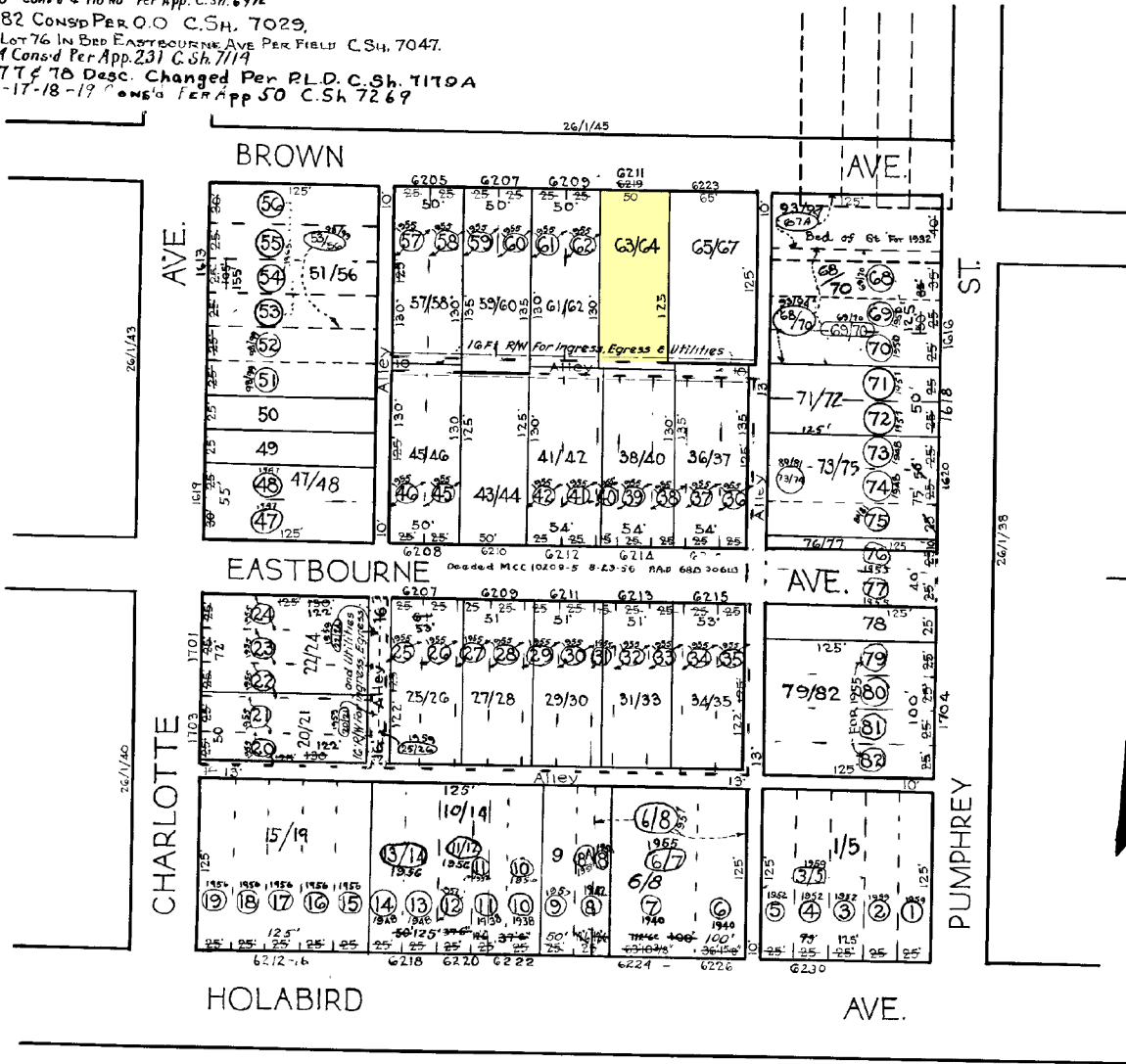


REVISIONS

Lot 10 & 1/2 of 11 CONS'D PER DEED C.S.H. # 1578.
 Lots 6 & 7 CONS'D PER APP 2114 C.S.H. 1994.
 Lot 8 DIVIDED PER BOF A.E.P.S C.S.H. 2893.
 Lots 47 & 48 CONS'D PER APP 4842 C.S.H. 3879
 Lots 13 & 14 CONS'D PER APP 5959 C.S.H. 4289
 Lots 73 & 74 CONS'D PER APP 2352 C.S.H. 4289
 Lots 69 & 70 CONS'D PER APP 1175 C.S.H. 5132
 Lots 3, 4, & 5 CONS'D PER APP 0849 C.S.H. 5457
 Lot 11/12 PER APP C.S.H. 5819
 Lots 20/21 to 45/46 & 51/56 to 61/62 per App + PLD. C.S.H. 698687
 Lots 61/62 CONS'D & HO NO PER APP. C.S.H. 6992
 Lots 79 to 82 CONS'D PER O.O. C.S.H. 7029.
 Lot 774 Pt Lot 76 IN BLD EASTBOURNE AVE PER FIELD C.S.H. 7047.
 Lot 10-13/14 CONS'D PER APP 231 C.S.H. 7114
 Lot 76/77 & 78 Desc. Changed Per R.L.D. C.S.H. 7170A
 Lot 15-16-17-18-19 CONS'D PER APP 50 C.S.H. 7269

REVISIONS (cont)

Lot 71/72 Per App C.S.H. 7620
 Lots 6/9, 8/10, Divided Per Deed C.S.H. 7642
 Lot 1/5 PER APP C.S.H. 8139
 Lots 20/21, 22/24 & 23/26 PER P.L.D. C.S.H. 8254
 Lots 53-56 CONS'D PER O.O. C.S.H. 9448
 Lots 68, 69/70 CONS'D PER APP. C.S.H. 95
 Lots 73/74 & 75 CONS'D PER O.O. C.S.H. 81-123
 Lots 67/73, 68/70 PER DEED C.S.H. 94-190
 Lots 51, 52 & 53 CONS'D PER O.O. C.S.H. 97-059



FORT CAMP HOLABIRD
 6918

NOTICE

THIS IS A REAL PROPERTY PLAT AS PROVIDED FOR UNDER ARTICLE 76(4) OF THE CITY CHARTER. IT IS COMPILED FROM TITLE AND OTHER SOURCES AND IS NOT AN AUTHENTIC SURVEY.

NOTE - BLOCK 26-1-39 FOR 1941

6796

CITY OF BALTIMORE
 DEPARTMENT OF PUBLIC WORKS
 BUREAU OF PLANS & SURVEYS
 PROPERTY LOCATION DIVISION

WARD 26 SECTION 1
 BLOCK 6796

SCALE: 1" = 80 FT. DATE: MAR 1931

TRACED BY *S. Banniffell*

LETTERED BY J.J.R.

CHECKED BY