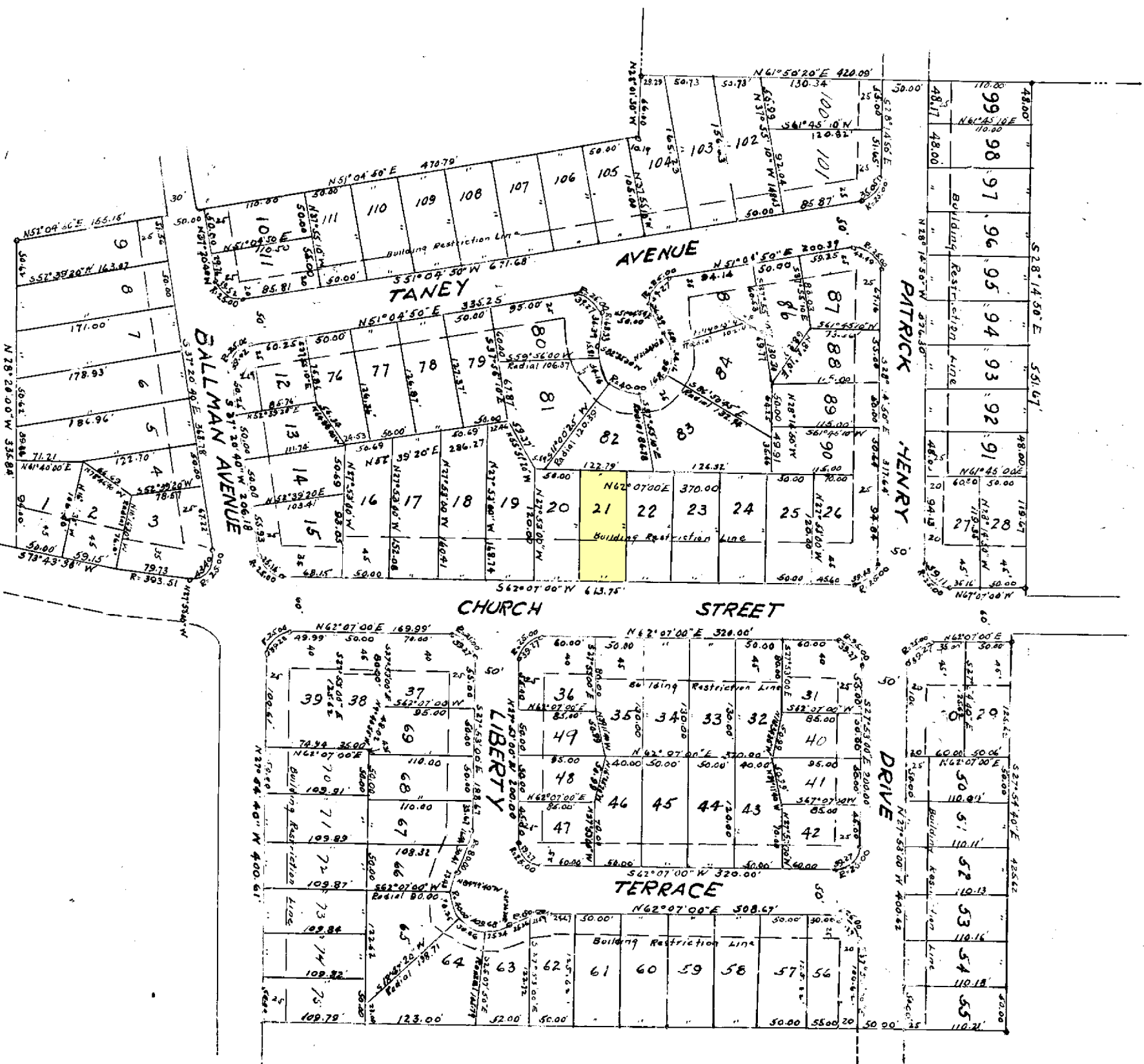
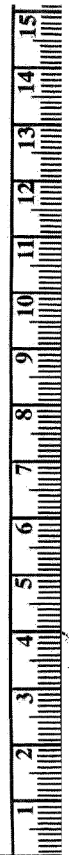


ANNE ARUNDEL COUNTY CIRCUIT COURT (Plat Book, Oversize Copy) Plat Book 17, p. 46; Plat 681, MSA_C2323-1093 Date Available 11/17/2022



PLAT
of
Colonial Housing Corporation
Part of
ROLAND TERRACE
Anne Arundel County, Md.

7/16/68
Filed May 15, 1968

ALBERT E. POHN, R.
SURVEYOR & CIVIL ENGINEER