

ENGINEER'S CERTIFICATE

I hereby certify that the plan shown hereon is correct, that it is a subdivision of part of the land conveyed by Lee E Stine and Agnita M Stine, his wife, to Brosius Development Corporation by deed dated December 19, 1957 and recorded among the Land Records of Washington County, Maryland in Liber 531, Folio 637 and part of the land conveyed by Nicodemus National Bank of Hagerstown, Substitute Trustees, to Lee E Stine and Agnita M Stine, his wife, by deed dated January 25, 1946 and recorded in Liber 232, Folio 696; and that stones marked thus \square and iron pipes marked thus \circ are in place where indicated.

DATE: NOVEMBER 6, 1958

A. Morton Thomas
 MORTON THOMAS
 PROFESSIONAL ENGINEER AND LAND SURVEYOR, 1918 MD.

OWNER'S DEDICATION

We, Brosius Development Corporation, a Maryland corporation, by Louis J Brosius, Vice President, and Howell C Happ, Secretary, and Lee E Stine and Agnita M Stine, his wife, owners of the property shown and described hereon hereby adopt this plan of subdivision, establish the minimum building restriction lines, and dedicate the streets to public use.

There are no suits of action, leases, liens, or trusts on the property included in this plan of subdivision excepting one deed of trust and the party in interest thereto has below indicated his assent to this plan.

DATE

Richard L. Baker (WITNESS) *Louis J. Brosius* (LOUIS J. BROSIUS, VICE-PRESIDENT)
Richard L. Baker (WITNESS) *Howell C. Happ* (HOWELL C. HAPP, SECRETARY)
V. T. Reynolds (WITNESS) *Lee E Stine* (LEE E STINE)
V. T. Reynolds (WITNESS) *Agnita M. Stine* (AGNITA M STINE)

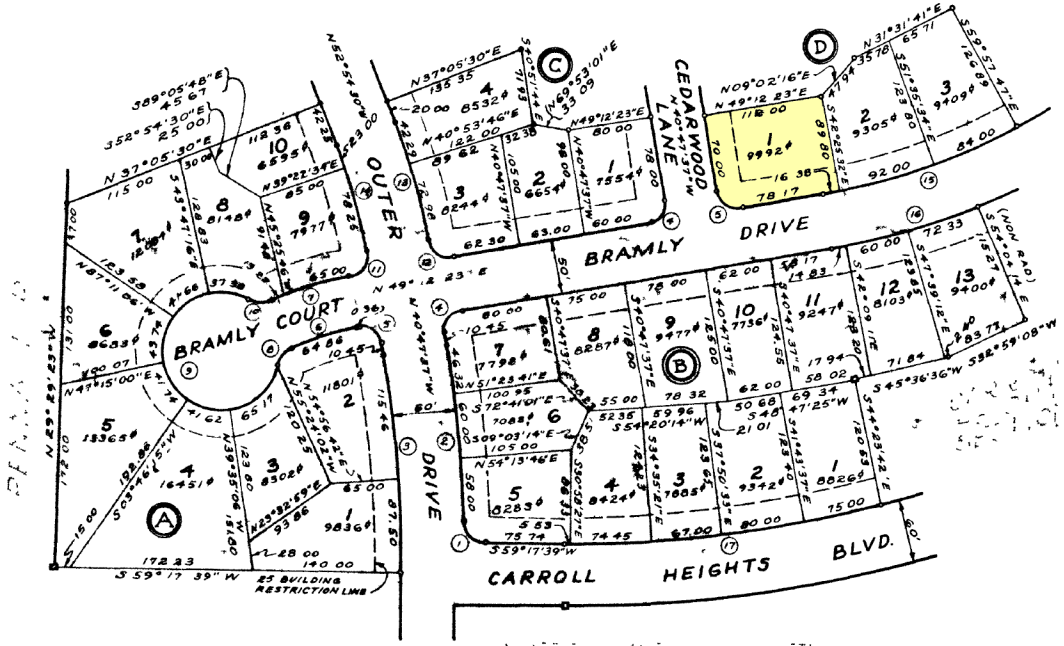
I assent to this plan of subdivision

Lee E Stine (WITNESS) *Max F. Kretzing* (MAX KRETZINGER, MORTGAGEE)

APPROVED BY THE MAYOR & COUNCIL
 Nov. 10, 1958
 Date: City Engineer

NO	RADIUS	ARC	DELTA	CD BEARING	CHORD	TANGENT
1	20 00	30 60	87°40'32"	N 76°52'05"W	27 70	19 20
2	1272 75	164 32	07°45'48"	N 36°54'43"W	164 20	82 29
3	1152 75	202 96	10°05'16"	N 35°44'59"W	202 70	101 74
4	20 00	31 42	90°00'00"	N 04°12'23"E	28 28	20 00
5	20 00	31 42	90°00'00"	N 85°47'37"W	28 28	20 00
6	241 86	64 86	15°22'00"	N 41°31'23"E	64 67	32 63
7	291 85	78 27	15°22'00"	S 41°31'23"W	78 04	39 37
8	25 00	22 39	51°19'04"	N 08°10'51"E	21 65	12 01
9	55 00	27 31	282°38'08"			
10	25 00	22 39	51°19'04"	S 59°29'35"W	21 65	12 01
11	20 00	32 13	92°03'29"	N 03°10'38"E	28 79	20 73
12	20 00	30 81	08°15'19"	N 86°39'57"W	27 85	19 40
13	436 88	115 27	10°22'12"	N 47°43'24"W	115 11	57 79
14	576 88	101 26	10°03'24"	S 47°52'48"E	101 13	50 76
15	575 00	335 67	33°26'53"	N 32°28'56"E	330 93	172 77
16	625 00	364 86	33°26'53"	S 32°28'56"W	359 71	187 80
17	1180 00	743 66	36°06'32"	N 41°14'23"E	731 41	384 65

NOTE:
 Easements - An easement 5' wide over and along the side lines and 5' wide over and along the rear of each lot in this subdivision and 10' wide over the lots along the boundary lines of this subdivision is hereby reserved for utilities and or drainage.



PARTS OF BLOCKS A, B, C & D GREYSTONE MANOR

WASHINGTON COUNTY, MARYLAND
 SCALE: 1"=100' NOVEMBER, 1958

A. Morton Thomas & Assoc.
 7939 NORFOLK AVENUE
 BETHESDA, MARYLAND

WASHINGTON COUNTY RECORDS COURT (subdivision) Plans, Map Plat 363-A, MSA_31255-4290. Date available 1959/02/14. Printed 10/18/2021.