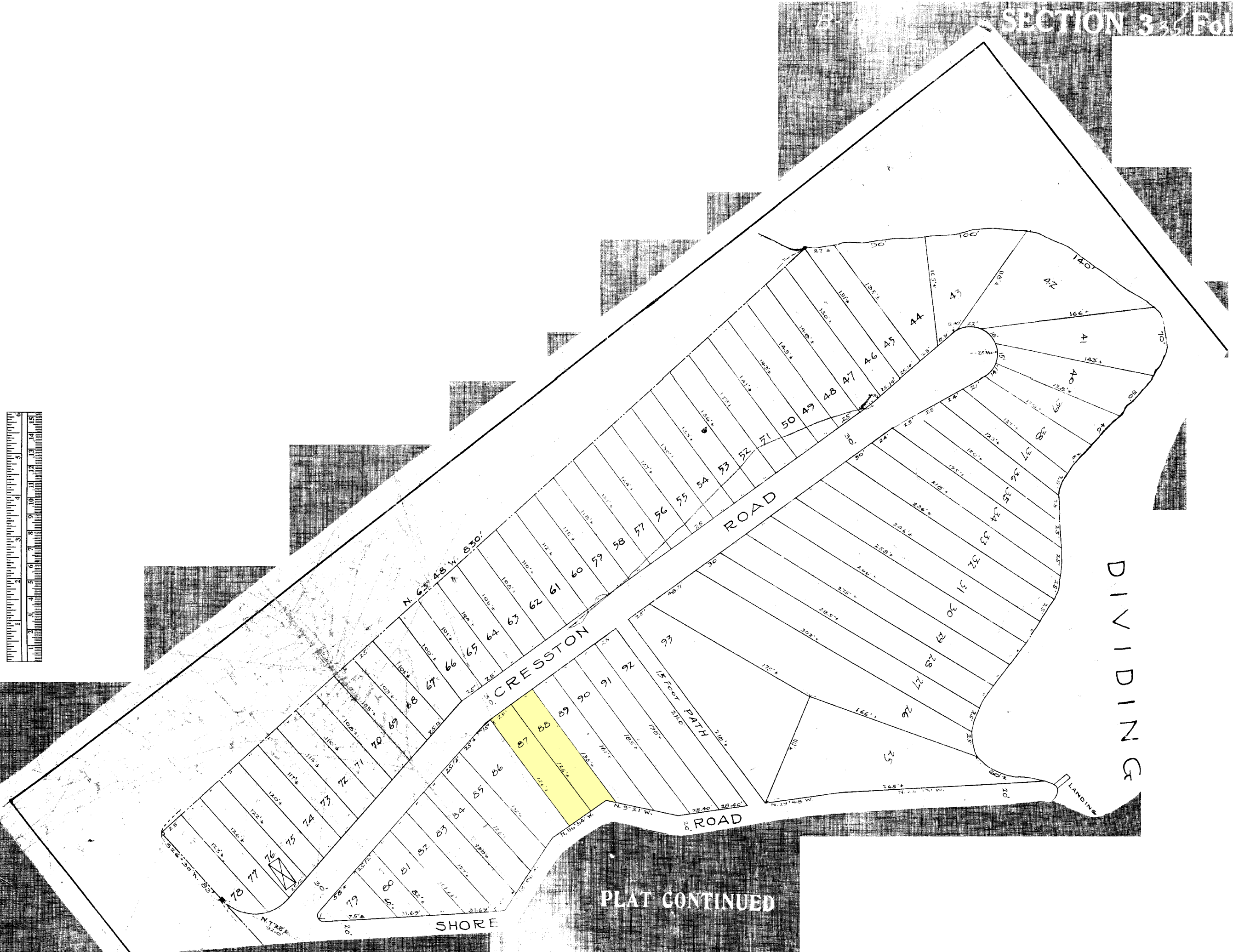


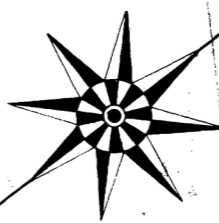


15, p. 35-36, Plats B-196-B-197, MSA\_C2323\_891, Date available: Printed 10/06/2022.

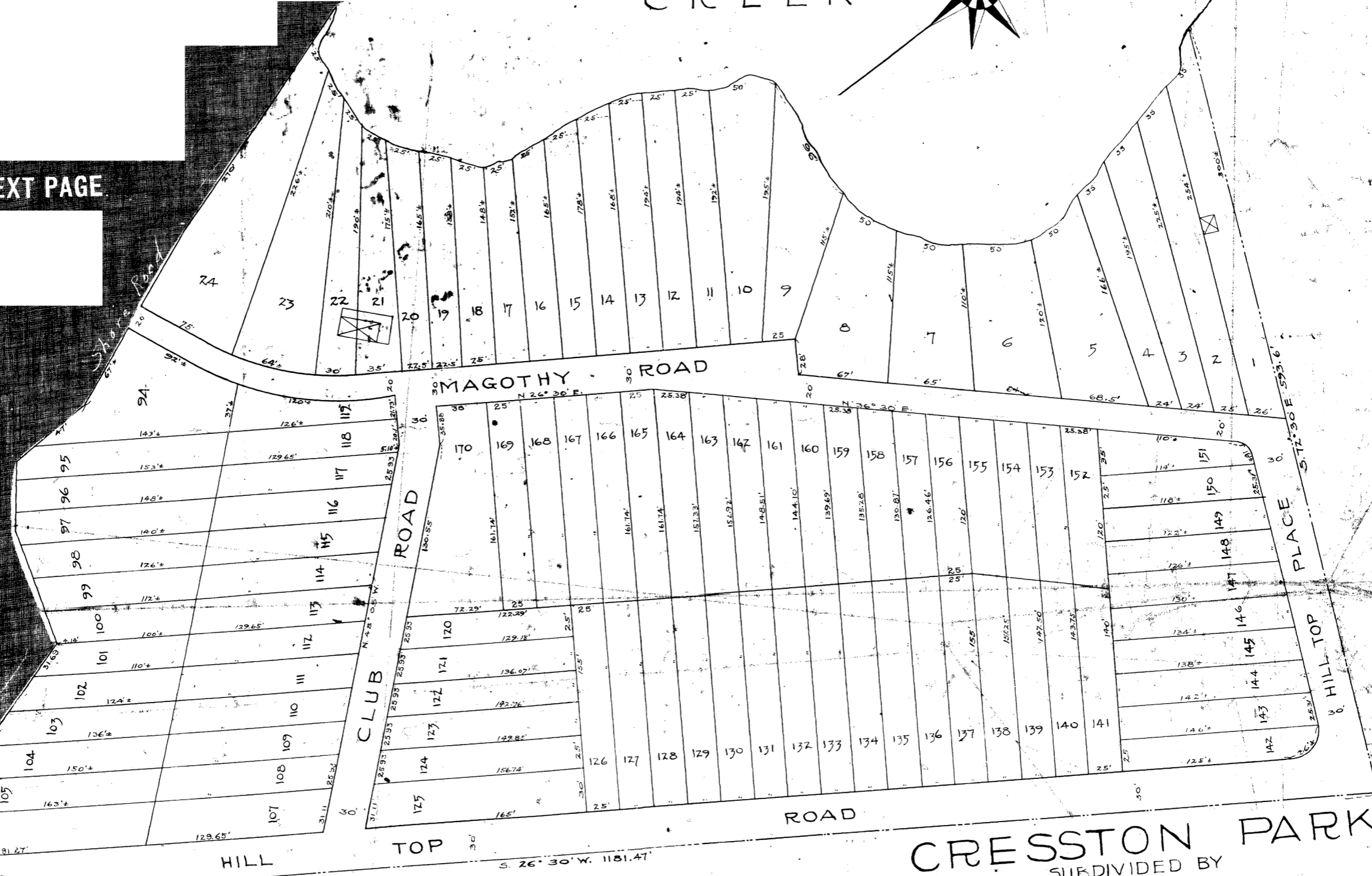


PLAT CONTINUED

CREEK



SEE NEXT PAGE



CRESSTON PARK  
SUBDIVIDED BY

JOSEPH HOFFMAN JACOBS.  
GUNTHER BUILDING BALTIMORE, MD.

SURVEYED & LAID OUT  
BY  
J. SPENCE HOWARD  
CIVIL CONSULTING ENGINEER BALTIMORE, MD.  
SCALE 1" = 40'

ANNE ARUNDEL COUNTY COURT (Plat Book, Oversize Copy), Plat Book 15, p. 35-36; Plats B-194-B-197, 195-2, 2323-891. Site available Printed 10/6/2022.