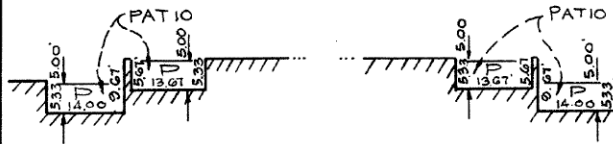


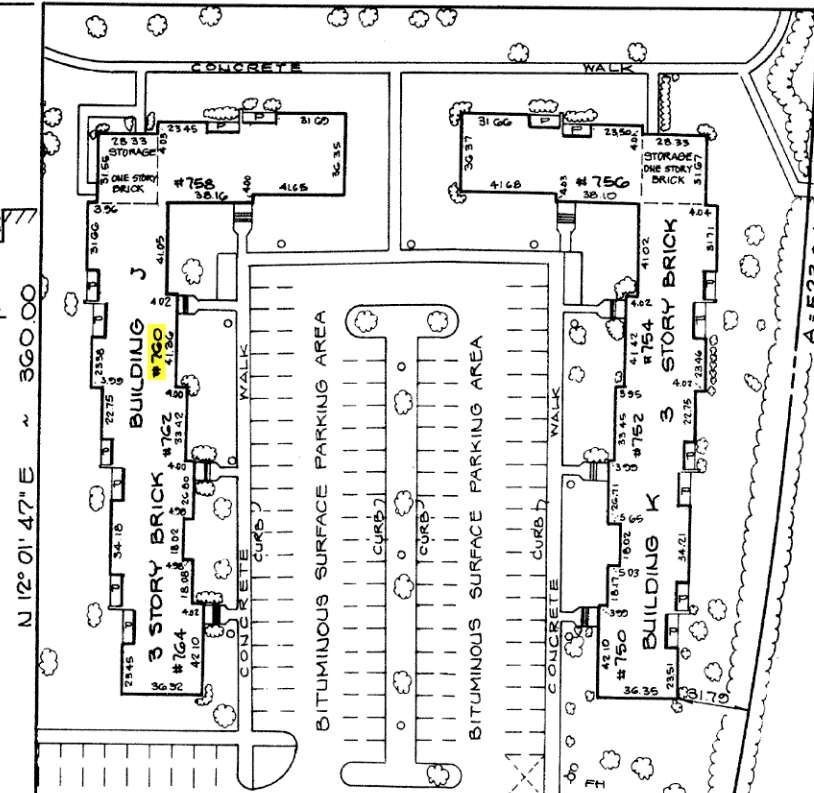
PLAT NO. 3665

SECTION II-B

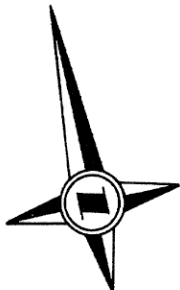
677° 58' 13" E ~ 350.64



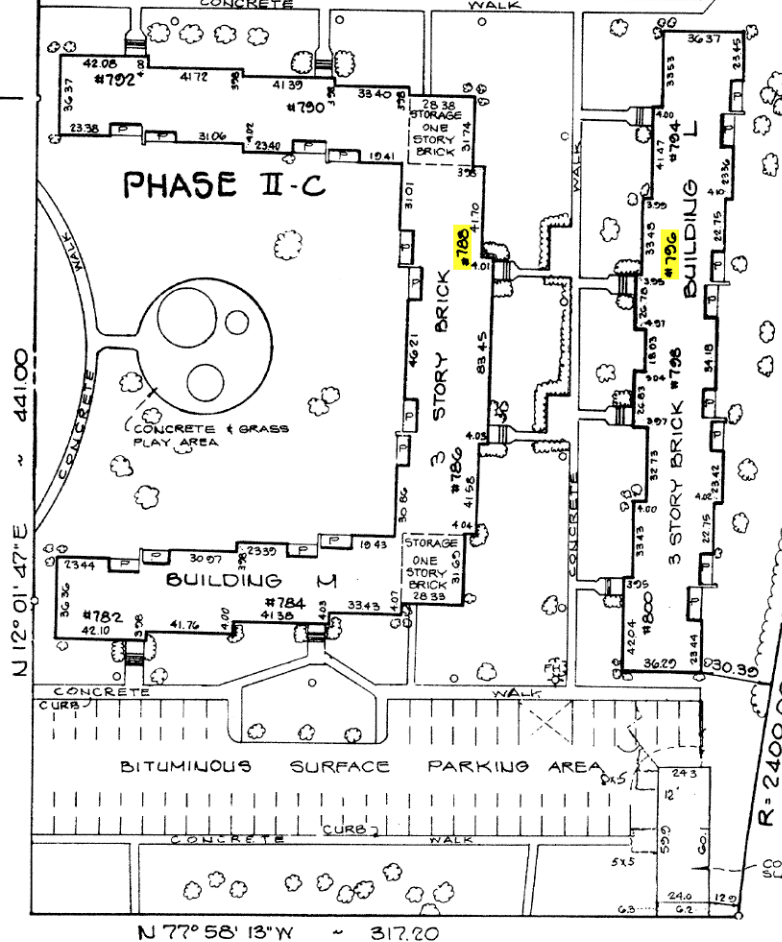
PHASE II - A



PHASE II-C AREA  
278,959 ± OR  
6.40403 AC.



PHASE I



LEGEND

- - Trees, shrubs or planting
- - Lamp
- ⊕ FH - Fire Hydrant

PLAT OF CONDOMINIUM  
DIAMOND FARMS CONDOMINIUM  
BUILDING LOCATION PLAN  
PHASE II-C

9th ELECTION DISTRICT  
MONTGOMERY COUNTY, MARYLAND  
Scale: 1" = 50' August, 1984

FILED  
SEP 21 1984

S. Ruffin Maddox, Inc.  
7210 Exfair Road  
Bethesda, Maryland 20014  
(301) 656-3416

RECORDED:  
CONDOMINIUM  
PLAT BOOK:  
PLAT NO:

MONTGOMERY COUNTY CIRCUIT COURT (Condominium Plats, MO) Plat 3665, MSA\_S1264\_497 Date available: 08/24/09/21 Printed: 05/05/23/21