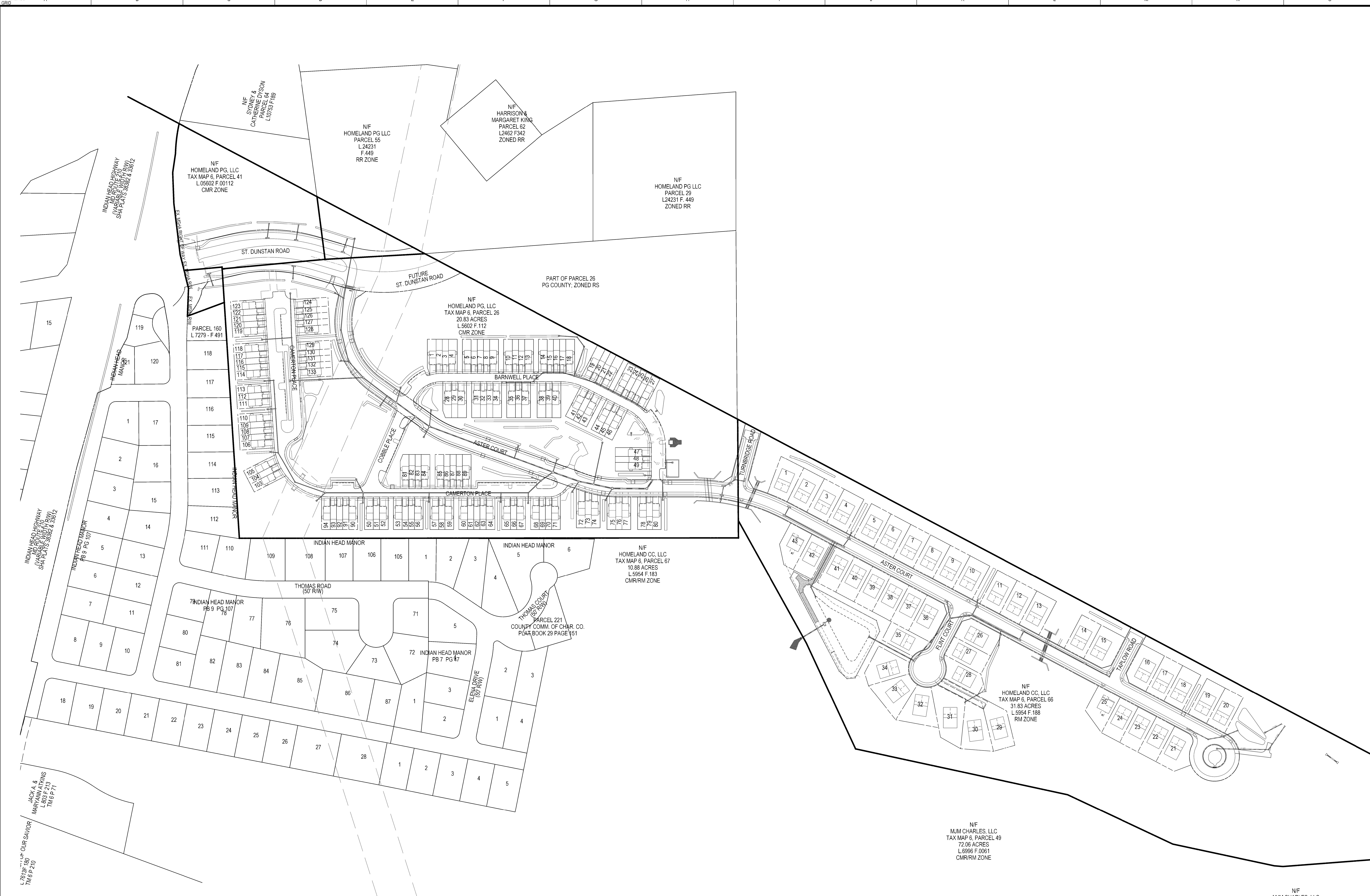


The original of this drawing document was prepared by Soltesz, Inc. (SOLTESZ). This document was not obtained directly from SOLTESZ, Inc. (SOLTESZ) and/or it was transmitted electronically. SOLTESZ cannot guarantee that unauthorized changes and/or alterations were not made by others. If verification of the information contained herein is needed, contact should be made directly with SOLTESZ. SOLTESZ makes no warranties, express or implied, concerning the accuracy of any information that has been transmitted by electronic means.



**SOLTESZ**  
 Engineering  
 Surveying  
 Planning  
 Environmental Sciences

Rockville  
 Lanham  
 Waldorf  
 Leonardtown  
 Frederick  
 Soltesz DC, LLC

WALDORF OFFICE  
 401 Post Office Road, Suite 103  
 Waldorf, MD 20602  
 P. 301.870.2166 F. 301.870.2884

www.soltesz.com

NO.	DATE	REVISIONS	BY	DATE	
1	FEBRUARY 2017	CAD STANDARDS VERSION 14 - 2009			
DESIGNED:	MFP	TECHNICIAN:	IUZ	CHECKED:	MFP

**MISS UTILITY NOTE**

INFORMATION CONCERNING EXISTING UNDERGROUND UTILITIES WAS OBTAINED FROM AVAILABLE RECORDS; THE CONTRACTOR MUST DETERMINE THE EXACT LOCATION AND ELEVATION OF ALL EXISTING UTILITIES AND UTILITIES ORIGINATING BY ENGINEERING TEST PITS BY HAND, WELL IN ADVANCE OF THE START OF EXCAVATION. CONTACT "MISS UTILITY" AT 1-800-261-7777, 48 HOURS PRIOR TO THE START OF EXCAVATION. IF CLEARANCES ARE LESS THAN SHOWN ON THIS PLAN OR TWELVE (12) INCHES, WHOEVER IS LESS, CONTACT THE ENGINEER AND THE UTILITY COMPANY BEFORE PROCEEDING WITH CONSTRUCTION. CLEARANCES LESS THAN NOTED MAY REQUIRE REVISIONS TO THIS PLAN.

**OWNER/DEVELOPER/APPLICANT**

PULTE GROUP  
 C/O DONALD HUGHES  
 9302 LEE HIGHWAY, SUITE 1000  
 FAIRFAX, VA 22031  
 PHONE: (703) 634-9367

MAP	8	GRID	D-2
ZONING CATEGORY:	CMR/RMHC	W&S CATEGORY:	W-3/S-3
TAX MAP / PARCEL:	6/26, 66, & 158	GRID:	13 & 19
SITE DATUM:	HORIZONTAL - NAD83	LIBRARY / FOLD:	L 5954 F 188
VERTICAL:	NAVD88		L 5802 F 112

**PROFESSIONAL CERTIFICATION**  
 I HEREBY CERTIFY THAT THESE DOCUMENTS WERE PREPARED OR APPROVED BY ME, AND THAT I AM A DULY LICENSED PROFESSIONAL ENGINEER UNDER THE LAWS OF THE STATE OF MARYLAND.  
 LICENSE NO. 38757, EXPIRATION DATE: 01-14-19

**LOT LAYOUT**

MJM CHARLES, LLC  
 TAX MAP 6, PARCEL 49  
 72.06 ACRES  
 L 6996 F 0061  
 CMR/RM ZONE

**POTOMAC CHASE SUBDIVISION**  
 RESIDENTIAL DEVELOPMENT

POMONKEY (7th) ELECTION DISTRICT, CHARLES COUNTY, MARYLAND

PROJECT NO.  
 0008-75-03

SHEET **1**  
 OF **1**

SCALE: 1" = 100'