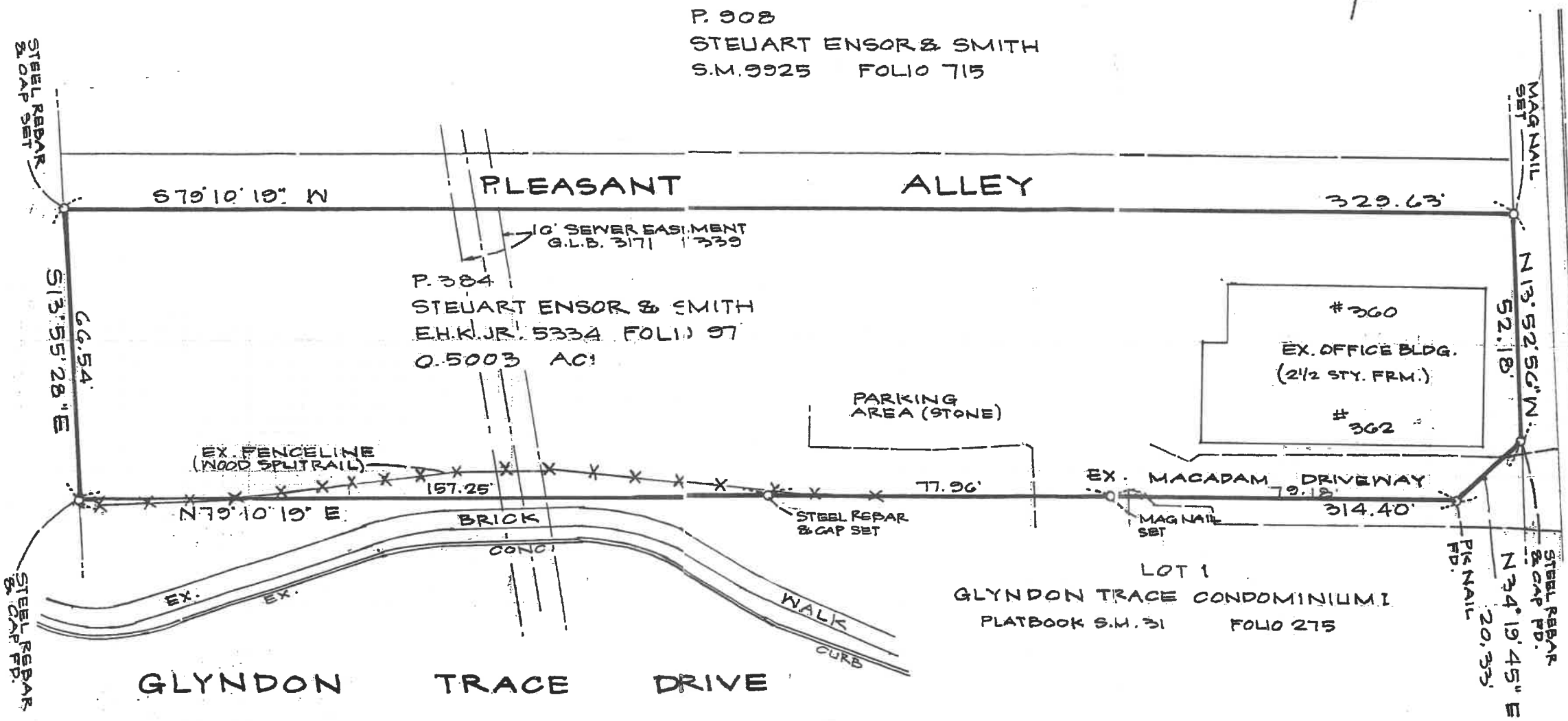


REISTERSTOWN ROAD
(MD. RTE. 140)



GLYNDON TRACE CONDOMINIUM I
PLATBOOK S.M. 31 FOLIO 275

BOUNDARY SURVEY OF
THE STEWART ENSOR & SMITH PROPERTY

4TH ELECTION DISTRICT
DATE: AUGUST 2, 2011
TAX MAP: 48

BALTIMORE COUNTY, MD.
SCALE: 1"=30'
PARCEL: 384

Exp. 1.22.12



A.L. SNYDER
SURVEYOR, INC.

1911 HANOVER PIKE
HAMPSTEAD, MD. 21074
PHONE: 410-239-7144
FAX: 410-374-9605
EMAIL: alsurveyor@verizon.net

KK SPIKE IN POLE #BG&E: 509615.
C&P2, 70.0' RT. STA. 119+33.5
ELEV. 731.23

ROUTE

#84074

#400

NOW S.H.A.
SEE PLAT 48295

HISTORICAL HOUSE
2 STORY FRAME
& SHINGLE

OWNER: STEUART ENSOR &
SMITH CO.
ITEM NO.: 87960

#360/62
STEUART, ENSOR & SMITH
Co.

#87960

2 STORY FRAME

140

STEUART, ENSOR & SMITH Co.

#356

#87961

2 STORY
FRAME &
SHINGLE

#354

#87962

2 1/2 STORY
FRAME

ROBERT L.
CAVANAGH

#350 *etux*

#87963

2 STORY
BRICK

(0"-4") HOT MIX ASPHALT
(4"-9 1/2") CEMENT CONCRETE
MOISTURE CONTENT 4.2.0'
(9 1/2"-5.0') = (4/9')

WEST STREET (PAPER ST) PLEASANT ALLEY

WEST STREET
SURVEY
LINE STATION 121+00

CONSTRUCTION MD. RTE. 140

STA. 118+30.59 @ MD. RTE. 140
= STA. 5+24.33 @ GLYNDON DR.

SIGNED FOR PURPOSE
OF IDENTIFICATION

Shirley H. Smith

