

REVISIONS

Lot 49/50 Per App #1804 11-9-32 Ch. Sh #GG9  
 Lots 101A & 102 Cons. For 1935 C. Sh. N°816 4-6-34.  
 LOTS 1-11, 22-48 & 27-100 DIM CHANGE C. Sh. 78-133-136

27

N. FULTON

AVE.



N. FULTON

AVE.

1440	1438	1436	1434	1432	1430	1428	1426	1424	1422
15'8"	14'	14'	14'	14'	14'	14'	14'	14'	15'
85	20	19	18	17	16	15	14	13	12

1420	1418	1416	1414	1412	1410	1408	1406	1404	1402	1400
14'	13'	13'	13'	13'	13'	13'	13'	13'	13'	15'
11	10	9	8	7	6	5	4	3	2	1

ST.

ST.

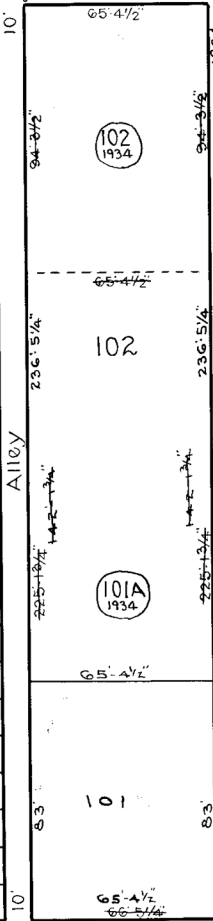
ST.

**NOTICE**  
 THIS IS A REAL PROPERTY PLAT AS PROVIDED FOR UNDER ARTICLE 76(d) OF THE CITY CHARTER. IT IS COMPILED FROM TITLE AND OTHER SOURCES AND IS NOT AN AUTHENTIC SURVEY.

20

PRESSTMAN

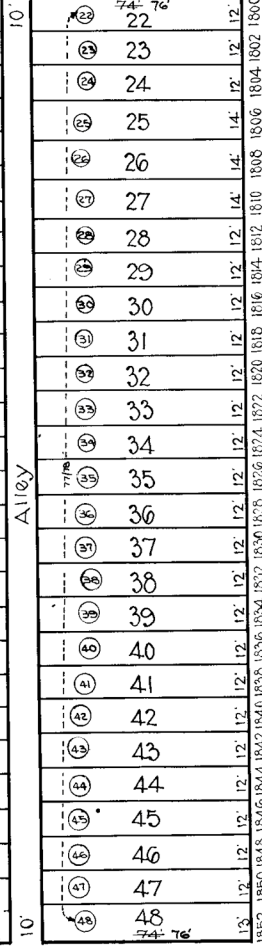
1947	1845	1843	1841	1839	1837	1835	1833	1831	1829	1827	1825	1823	1821	1819	1817	1815	1813	1811	1809
13'	13'	13'	13'	13'	13'	13'	13'	13'	13'	13'	13'	13'	13'	13'	13'	13'	13'	13'	13'
77	78	79	80	81	82	83	84	85	86	87	88	89	90	91	92	93	94	95	96



KAVANAUGH

(40)

1857	1855	1853	1851	1849	1847	1845	1843	1841	1839	1837	1835	1833	1831	1829	1827	1825	1823	1821	1819	1817	1815	1813	1811	1809	1807	1805	1803	1801																															
14'	13'	13'	13'	13'	13'	13'	13'	13'	13'	13'	13'	13'	13'	13'	13'	13'	13'	13'	13'	13'	13'	13'	13'	13'	13'	13'	13'	15'																															
60	59	58	57	56	55	54	53	52	51	50	49	48	47	46	45	44	43	42	41	40	39	38	37	36	35	34	33	32	31	30	29	28	27	26	25	24	23	22	21	20	19	18	17	16	15	14	13	12	11	10	9	8	7	6	5	4	3	2	1

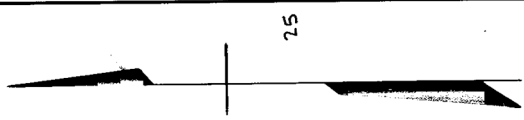


N. MONROE

ST.

LORMAN

TRACED BY G. Moorehead  
 LETTERED BY W. M. Lee  
 CHECKED BY



25

CITY OF BALTIMORE  
 DEPARTMENT OF PUBLIC WORKS  
 BUREAU OF SURVEYS  
 PROPERTY LOCATION DIVISION  
 WARD 15 SECTION 8  
 BLOCK 26  
 SCALE 1" = 40.0' DATE Nov. 1929

31