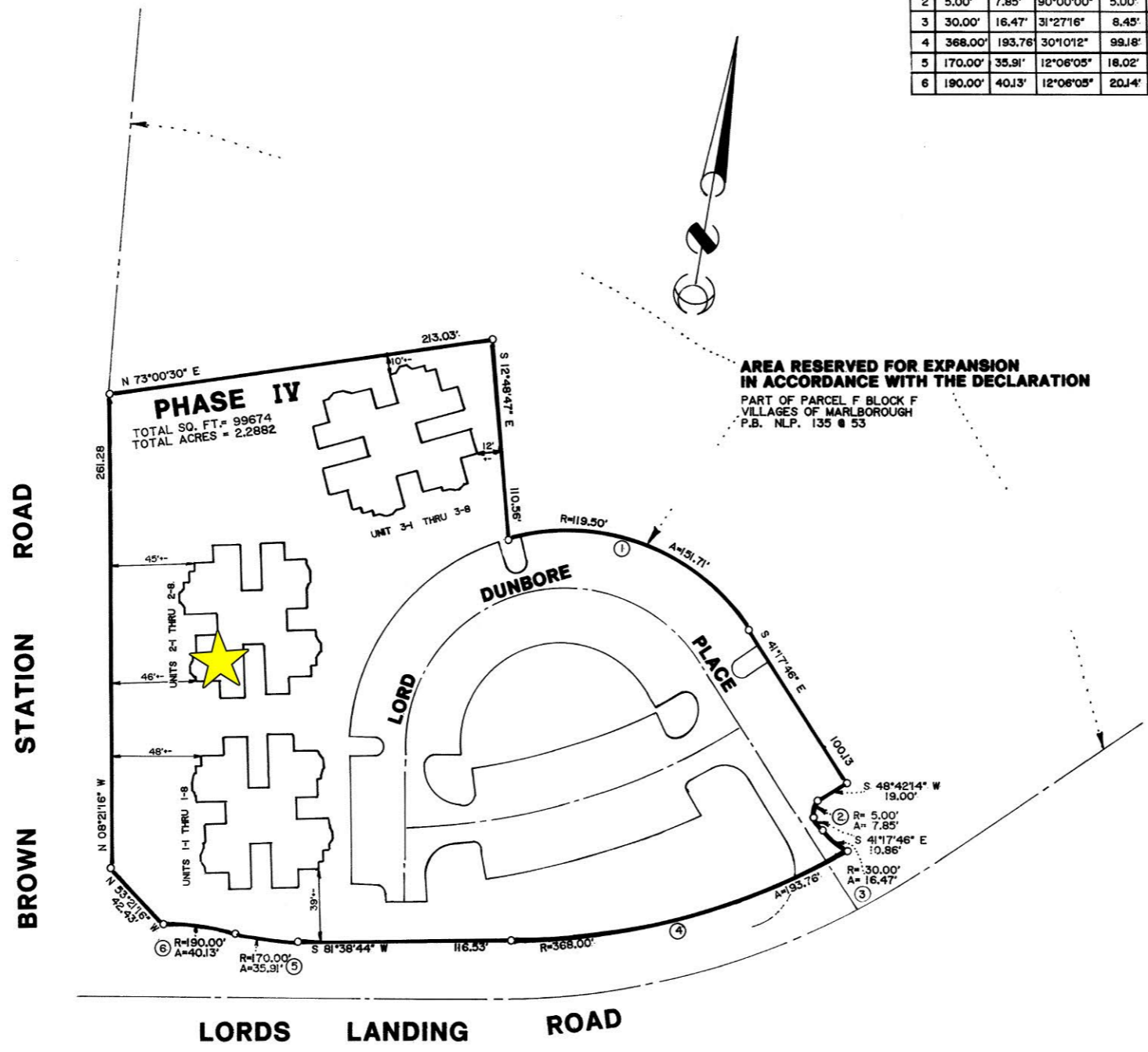
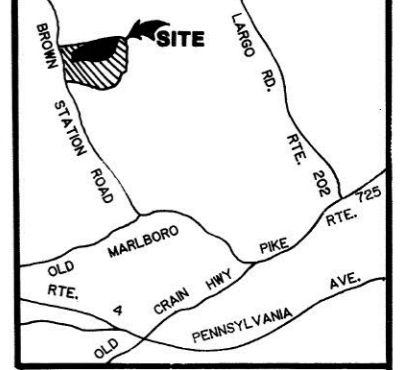


NLP-146-3

CURVE DATA

NO.	RADIUS	ARC	DELTA	TAN.	CHORD	BEARING
1	119.50'	151.71'	72°44'15"	88.00'	141.72'	S 77°39'53" E
2	5.00'	7.85'	90°00'00"	5.00'	7.07'	S 03°42'14" W
3	30.00'	16.47'	31°27'16"	8.45'	16.26'	S 57°01'24" E
4	368.00'	193.76'	30°10'12"	99.18'	191.53'	S 66°33'43" W
5	170.00'	35.91'	12°06'05"	18.02'	35.84'	S 87°41'47" W
6	190.00'	40.13'	12°06'05"	20.14'	40.06'	S 87°41'47" W



**AREA RESERVED FOR EXPANSION
IN ACCORDANCE WITH THE DECLARATION**
PART OF PARCEL F BLOCK F
VILLAGES OF MARLBOROUGH
P.B. NLP. 135 @ 53

NOTE
The property shown hereon as street and parking areas
are part of General Common Elements as defined and described
in the declaration.

FILED
APR 27 1989
Norman L. Pritchett
Clerk of the Circuit Court
Prince Georges County, Md.

PHASE IV
INCLUDING UNITS 1-1 THRU 1-8, 2-1 THRU 2-8, & 3-1 THRU 3-8
LORDS LANDING VILLAGE CONDOMINIUM

DECLARANT
Wellington Homes, a California General Partnership
Liber 6528 Folio 303

MARLBORO (3rd) ELECTION DISTRICT
PRINCE GEORGE'S COUNTY, MARYLAND
SCALE 1" = 50' APRIL 1989

RDA
REAL ESTATE DEVELOPMENT TECHNOLOGY ASSOCIATES INC.
ENGINEERS • LAND PLANNERS • LAND SURVEYORS
15207A MARLBORO PIKE • FORD OFFICE BUILDING
UPPER MARLBORO MARYLAND 20772
PHONE: (301) 627-3100

DEPARTMENT OF
ASSESSMENTS
AND TAXATION
APPROVED
4/26/89 [Signature]
DATE BY

RECORDED 4-27-89
PLAT BOOK NLP-146
PLAT NO. 3

PRINCE GEORGE'S COUNTY CIRCUIT COURT (Subdivision Plats, PG) Plat Book NLP 146, pp. 1-3
MSA SSU 1250-2768-3 Date available 10/13/89
Maryland State Archives