

REVISIONS

LOTS 1, 2, 6, 11A, 11B, 11Z CORR PER DEEDS CH 51, 84-065

SEE SHEET NO. 2

ST.

MATCH

7059

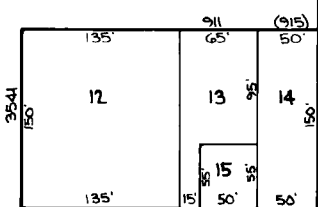
(10)

34.51'

34.51'

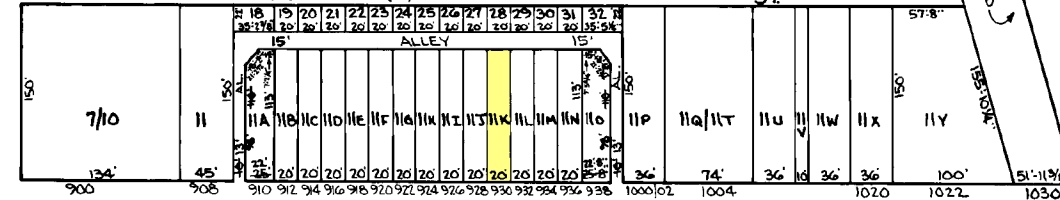
250'

ANNABEL (70') AVE.



FREEMAN

9TH



E. PATAPSCO

(100)

AVE.

7088

ST. VICTOR ST.

7139

10TH ST.

7245

ST. MARGARET ST.

7245-A

WEST BAY AVE.

7274-B

17B

LINE

17A
3.505 Ac.
K/A 1026 E. PATAPSCO AVE.

11Z
4.896 Ac.
4.898 Ac. CORR
84-8-83

7274-A

CITY OF BALTIMORE
DEPARTMENT OF PUBLIC WORKS

PROPERTY LOCATION DIVISION

WARD 25 SECTION 6

BLOCK 7274

SCALE 1" = 100' DATE AUGUST, 1983

SHEETS IN SET 2
SHEET NO. 1

NOTICE

THIS IS A REAL PROPERTY PLAT AS PROVIDED FOR UNDER ARTICLE 76(d) OF THE CITY CHARTER IT IS COMPILED FROM TITLE AND OTHER SOURCES AND IS NOT AN AUTHENTIC SURVEY.

TRACED BY: *[Signature]*
LETTERED BY: *[Signature]*
CHECKED BY: