

REVISIONS

LOTS 1, 2, 6, 11A, 11B, 11Z CORR PER DEEDS CH 51, 84-065

SEE SHEET NO. 2

ST.

MATCH

7059

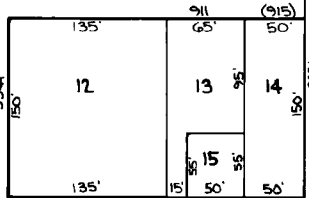
(100)

34.51'

693.4' 693.6'

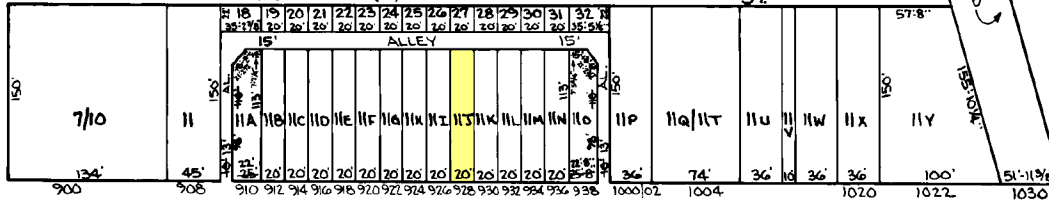
250'

ANNABEL (70') AVE.



FREEMAN

9TH



E. PATAPSCO

(100)

AVE.

7088

ST. VICTOR ST.

7139

10TH ST.

7245

ST. MARGARET ST.

7245-A

WEST BAY AVE.

SHEETS IN SET 2
SHEET NO. 1

NOTICE

THIS IS A REAL PROPERTY PLAT AS PROVIDED FOR UNDER ARTICLE 76(d) OF THE CITY CHARTER IT IS COMPILED FROM TITLE AND OTHER SOURCES AND IS NOT AN AUTHENTIC SURVEY.

CITY OF BALTIMORE
DEPARTMENT OF PUBLIC WORKS

PROPERTY LOCATION DIVISION

WARD 25 SECTION 6

BLOCK 7274

SCALE 1" = 100' DATE AUGUST, 1983

TRACED BY: *[Signature]*
LETTERED BY: *[Signature]*
CHECKED BY: