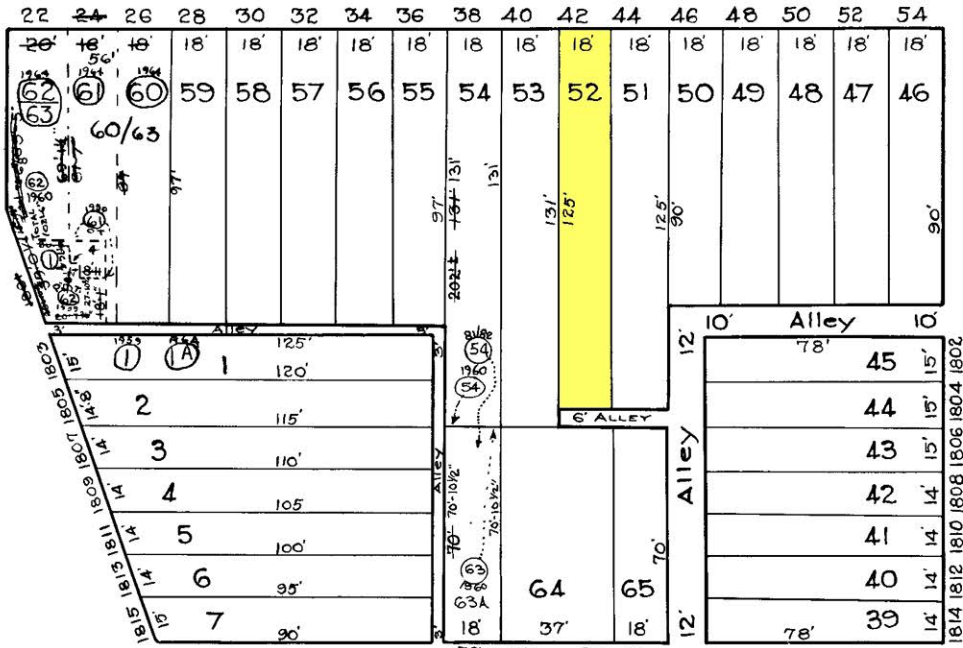


S. FULTON AVE.

AVE.

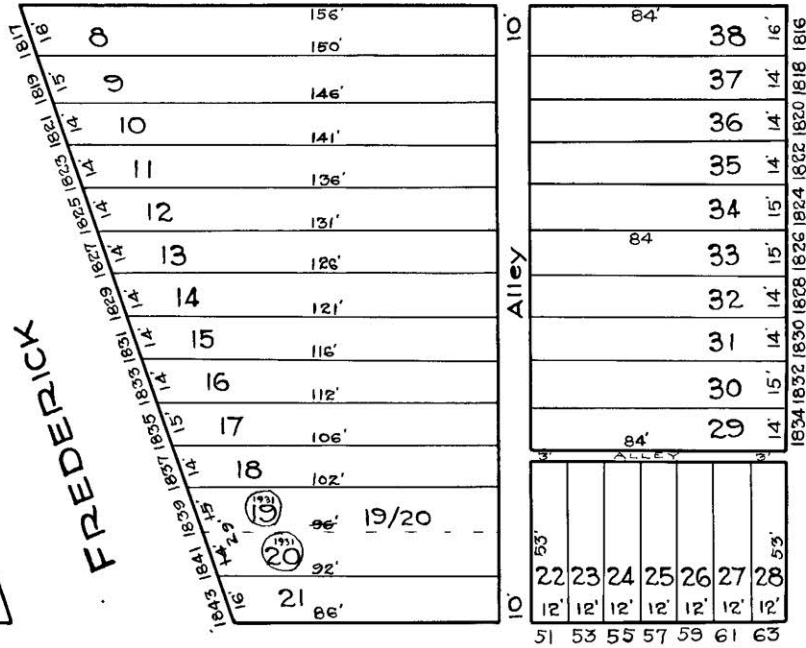


AVE.

ST.

S. ADDISON ST.

ST.



ST.

HOLLINS

243

W. LOMBARD

S. MONROE ST.

ST.

224

~ REVISIONS. ~  
 Part of lot 61 & 62 Con'd Per Deed C. Sh. 8077,  
 Lots 54 & 63 Con'd. Per D.D. C. Jr. 8331.  
 Lots 60 to 63 & 1 Condo Per App C. Sh. 9225  
 Lots 64 & 65, Dns. Ch. Per PLS, C. Sh. 301A.  
 Lots 54 & 63 Per Deed & Sub-Div, C. Sh. 82-138

NOTICE

THIS IS A REAL PROPERTY PLAT AS PROVIDED FOR UNDER ARTICLE 7G(b) OF THE CITY CHARTER. IT IS COMPILED FROM TITLE AND OTHER SOURCES AND IS NOT AN AUTHENTIC SURVEY.

226

CITY OF BALTIMORE  
 DEPARTMENT OF PUBLIC WORKS  
 BUREAU OF SURVEYS  
 PROPERTY LOCATION DIVISION

WARD 19 SECTION 7  
 BLOCK 227

SCALE: 1 INCH = 40 FT. DATE July 1929

TRACED BY G Moorehead

LETTERED BY G Moorehead Jos. Rokosky

CHECKED BY