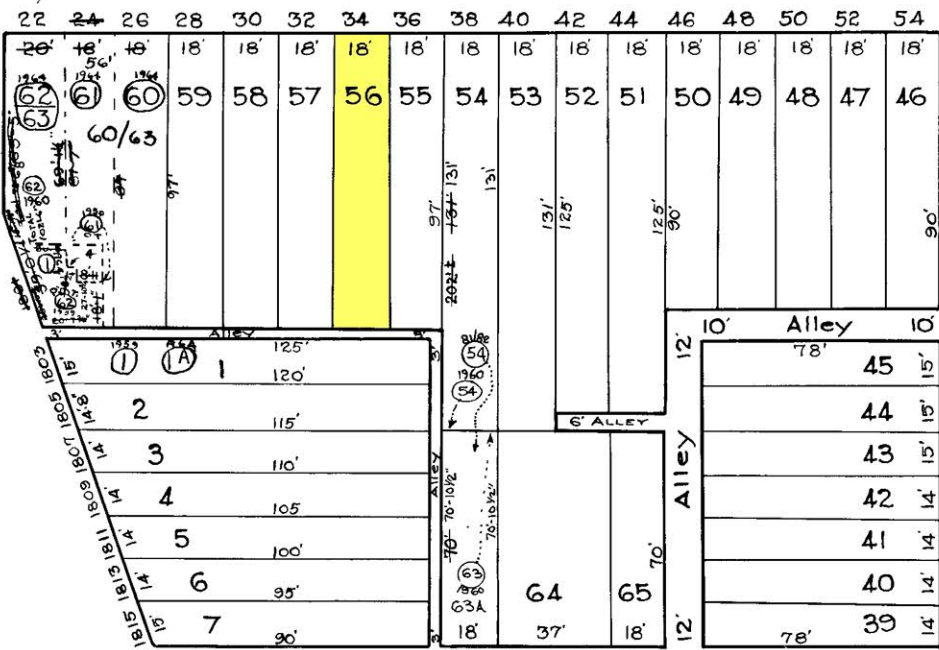


S. FULTON

AVE.



AVE.

ST.

S. ADDISON

ST.

ST.

HOLLINS

FREDECRICK

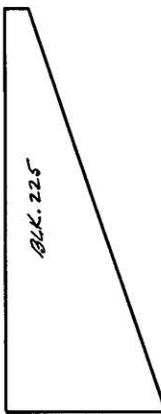
W. LOMBARD

S. MONROE

ST.

208

243



224

~ REVISIONS. ~
 Part of lot 61 & 62 Con'd Per Deed C. Sh. 8077.
 Lots 54 & 63 Con'd. Per D.D. C. Jr. 8331.
 Lots 60 to 63 & 1 Con'd Per App C. Sh. 9225.
 Lots 64 & 65, Dns. Ch. Per PLS. C. Sh. 301A.
 Lots 54 & 63 Per Deed & Sub-Div. C. Sh. 82-138.

NOTICE

THIS IS A REAL PROPERTY PLAT AS PROVIDED FOR UNDER ARTICLE 7G(b) OF THE CITY CHARTER. IT IS COMPILED FROM TITLE AND OTHER SOURCES AND IS NOT AN AUTHENTIC SURVEY.

226

CITY OF BALTIMORE
 DEPARTMENT OF PUBLIC WORKS
 BUREAU OF SURVEYS
 PROPERTY LOCATION DIVISION

WARD 19 SECTION 7
 BLOCK 227

SCALE: 1 INCH = 40 FT. DATE July 1929

TRACED BY G Moorehead
 LETTERED BY G Moorehead
 Jos. Rokosky
 CHECKED BY